

# Policy, System, and Environmental Changes at School Sites

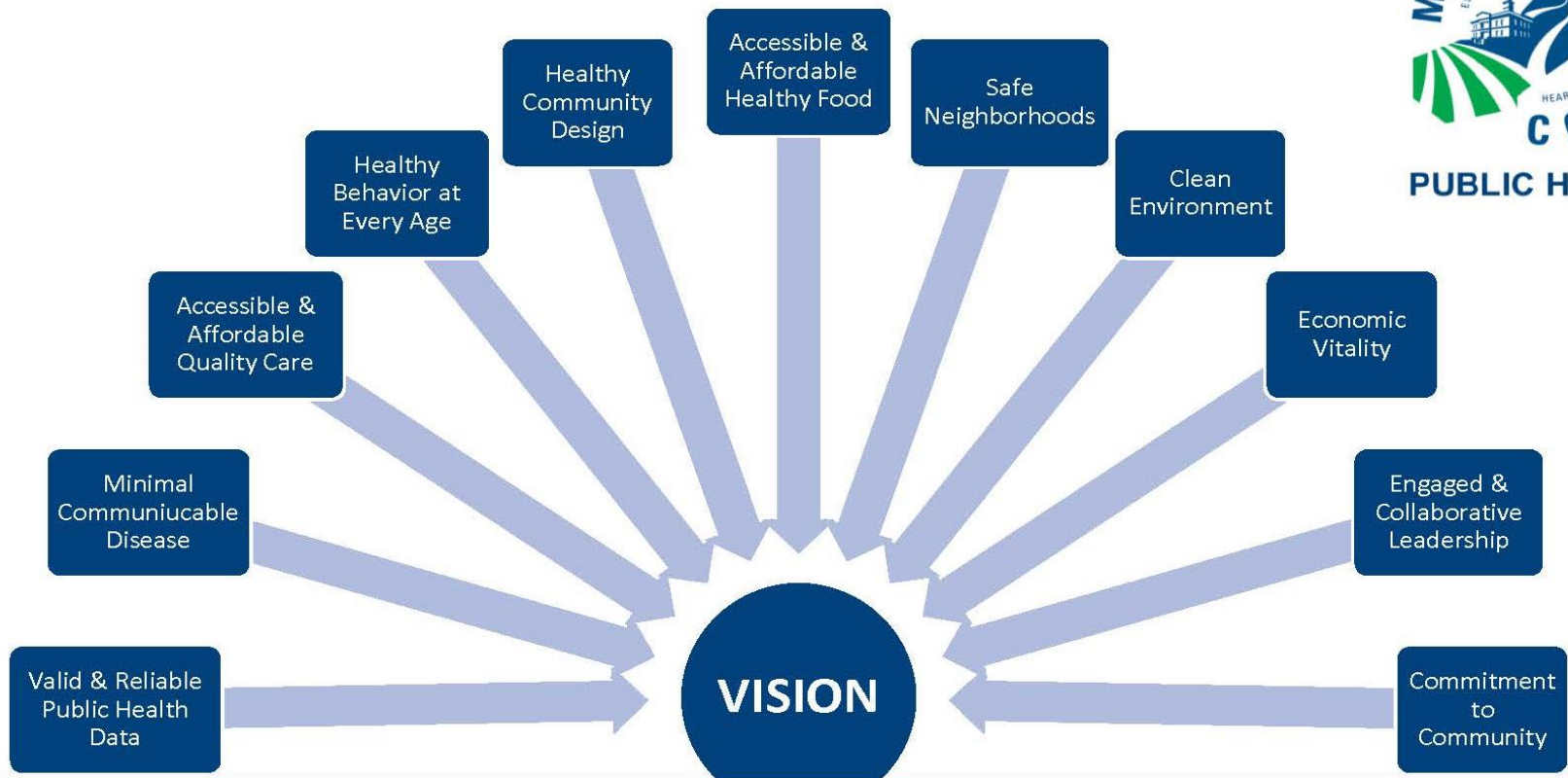
Madera County Department of Public  
Health

CalFresh Healthy Living Program



**Lead. Protect. Empower.**

**MISSION: LEAD. PROTECT. EMPOWER.**



## Guiding Principles

Culture of Honor • Innovation • Service • Quality Improvement  
Partnerships & Collaboration • Equity & Health in All Policies

Integrity Collaboration Accountability Respect Equity

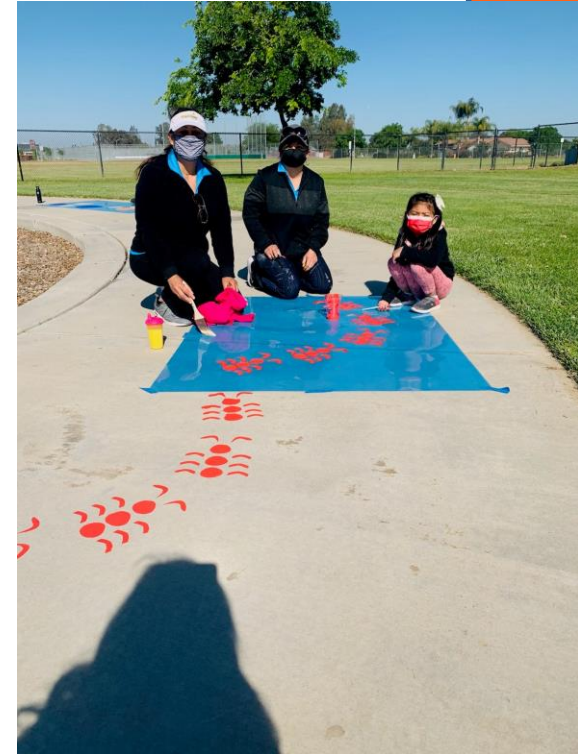
# Nishimoto Elementary Stencil Project



Lead. Protect. Empower.



# Berenda Elementary Stencil Project



Lead. Protect. Empower.



# Millview Elementary Stencil Project





# Madera High School Secret Garden



Lead. Protect. Empower.

# Elementary School Gardens



- Sierra Vista is planting a smoothie garden.
- Millview has a parent led garden with herbs and grapes.
- Parkwood will establish a rolling garden.
- Nishimoto is planting pumpkin patch over the summer for when students return.
- Cesar Chavez will start their garden next school year when students return and plants vegetables in their new garden beds.



# CalFresh Healthy Living Staff



**Andrea Fillebrown**  
Health Education Coordinator  
Office: (559) 675-7893  
[andrea.fillebrown@maderacounty.com](mailto:andrea.fillebrown@maderacounty.com)



**Joanna Orea**  
Health Education Specialist  
Office: (559) 675-7893  
[joanna.orea@maderacounty.com](mailto:joanna.orea@maderacounty.com)



**Maribel Gonzalez**  
Health Education Specialist  
Office: (559) 675-7893  
[Maribel.gonzalez@maderacounty.com](mailto:Maribel.gonzalez@maderacounty.com)



**Lead. Protect. Empower.**