



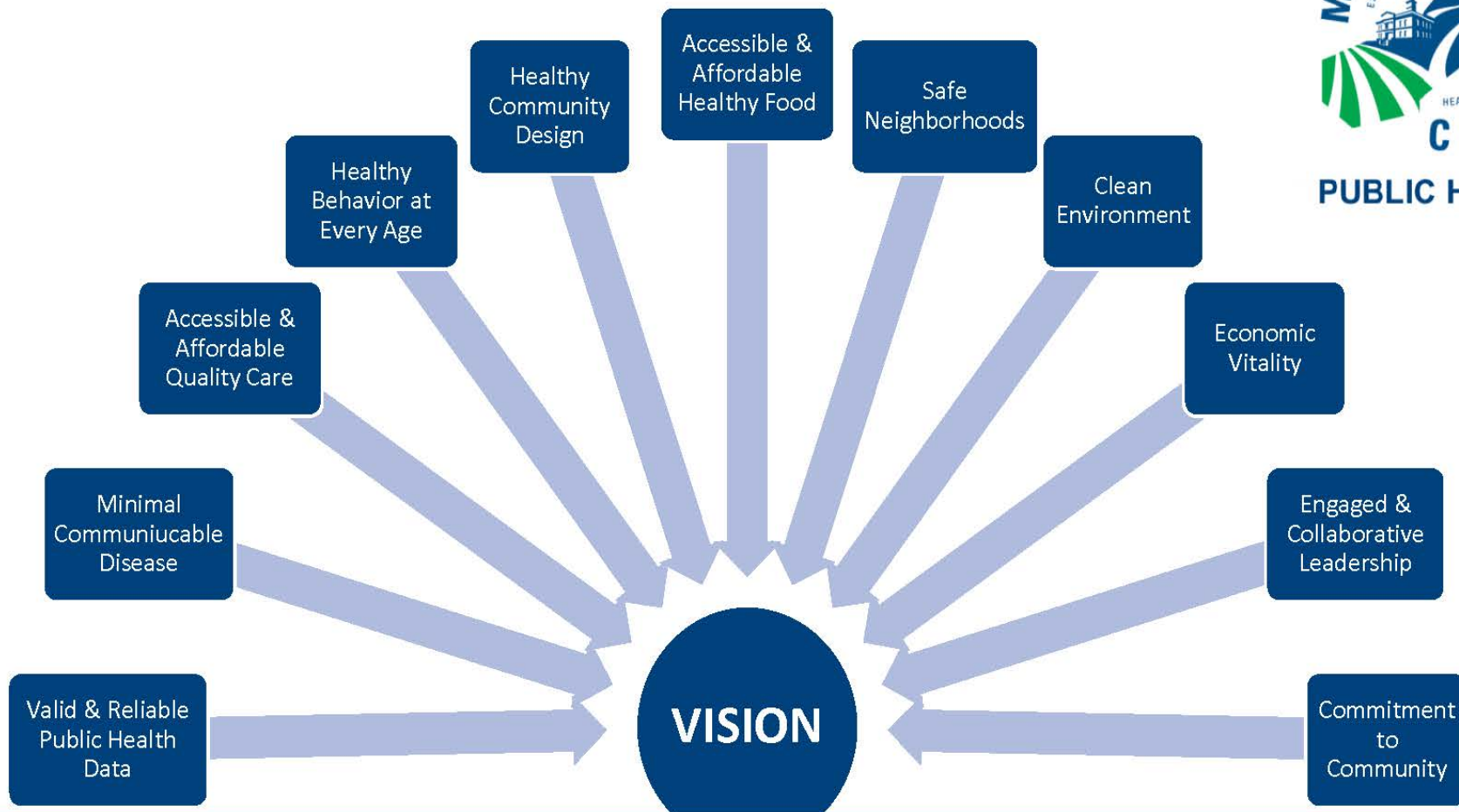
# Policy System and Environmental (PSE) Changes

Presented by Madera County  
Department of Public Health



**Lead. Protect. Empower.**

**MISSION: LEAD. PROTECT. EMPOWER.**



## Guiding Principles

Culture of Honor · Innovation · Service · Quality Improvement  
Partnerships & Collaboration · Equity & Health in All Policies

Integrity Collaboration Accountability Respect Equity



# Stencil Project



**Lead. Protect. Empower.**

# Stencil Project

- Stencils Promote physical activity and academic learning
- Stencils were painted at James Monroe and Ezequiel Tafoya Alvarado Academy
- Resident Champions and parents volunteered for the project





# Stencil Project



Lead. Protect. Empower.



# Walking School Bus Program



**Lead. Protect. Empower.**



# Walking School Bus Program

Pre COVID:

- Location: George Washington Elementary
- The program addressed pedestrian safety by:
  - helping students cross a main uncontrolled crosswalk and
  - Walk on the street due to lack of sidewalks.
- Program was led by volunteer parents.
- There was an average participation rate of 7-25 students.



**Lead. Protect. Empower.**

# Walking School Bus Program

Post COVID:

- **Sidewalks were built!!**
- Walking School bus  
Parents had voiced out their concerns to elected and non-elected city officials in a meeting organized with the help of the Health department.



**Lead. Protect. Empower.**



# Summer Meal Distribution

- In the past we have partnered with Nutrition Services at the parks.
- Focused on Rethink Your Drink and physical activity.



**Lead. Protect. Empower.**

# Summer Meal Distribution

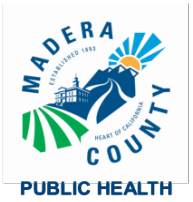
Healthy toolkits consisted of:

- Toothbrush & toothpaste
- Rethink Your Drink cards
- Healthy eating recipe cards
- Information on staying physically active
- Coloring books & crayons





# Summer Meal Distribution



Lead. Protect. Empower.



# Parent Education and Gardening

Pre COVID:

- Conducted nutrition education for parents at 4 elementary school sites.
- 1<sup>st</sup> portion of the class was a PowerPoint presentation from the Eat Healthy Be Active curriculum
- 2<sup>nd</sup> portion of the class was physical activity through gardening activities.



**Lead. Protect. Empower.**



# Parent Education and Gardening

Post COVID:

- All in person presentations were canceled.
- Brought back parents one at a time to care for the garden.
- Parents were able to harvest crops that were ready.
- Plants that were not ready for harvest were taken home for families to start gardens at home.



**Lead. Protect. Empower.**

# Parent Education and Gardening

Moving forward:

- LHD will provide nutrition education to all parents of Madera Unified School District via zoom.
- In home gardening will be encouraged.
- Working with the Parent Resource Center and local stores to provide gardening materials.



**Parent Resource Center**

*Working together with parents, schools,  
and the community to help students succeed*



**Lead. Protect. Empower.**



# Madera County Cal-Fresh Staff



**Alan Gilmore**

Public Health Program Manager

Office: (559) 675-7893

[Alan.Gilmore@maderacounty.com](mailto:Alan.Gilmore@maderacounty.com)

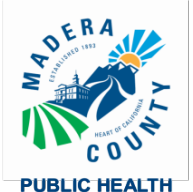


**Andrea Fillebrown**

Health Education Specialist

Office: (559) 675-7893

[andrea.fillebrown@maderacounty.com](mailto:andrea.fillebrown@maderacounty.com)



**Lead. Protect. Empower.**

# Madera County Cal-Fresh Staff



**Elia Medina**

Health Education Specialist

Office: (559) 675-7893

[elia.medina@maderacounty.com](mailto:elia.medina@maderacounty.com)



**Joanna Orea**

Health Education Specialist

Office: (559) 675-7893

[joanna.orea@maderacounty.com](mailto:joanna.orea@maderacounty.com)

