

CONSTRUCTION LEGEND:

- LIMITS OF CONCRETE IMPROVEMENTS
- LIMITS OF ORNAMENTAL IRON FENCE IMPROVEMENTS
- LIMITS OF CHAIN LINK FENCE IMPROVEMENTS

CONSTRUCTION NOTES:

- ALL EXISTING ASPHALT CONCRETE PAVING AND CONCRETE IMPROVEMENTS NOT DESIGNATED FOR REMOVAL MUST BE PROTECTED AT ALL TIMES.
- ALL CONCRETE MOWSTRIPS, RAMP AND SIDEWALKS SHALL HAVE WEAKENED PLANE JOINTS AT 10 FEET MAXIMUM ON CENTER AND ONE HALF INCH EXPANSION JOINTS AT 30 FEET MAXIMUM ON CENTER PER DETAIL **A X101**.
- NO CONCRETE MAY BE POURED UNTIL THE FORMS HAVE BEEN REVIEWED AND APPROVED BY THE PROJECT INSPECTOR.
- ALL BURIED METALLIC OBJECTS SHALL HAVE A PROTECTIVE COATING OR BE WRAPPED WITH PROTECTIVE WRAP.
- ADJUST EXISTING SPRINKLER HEADS AND LATERAL LINES AS REQUIRED FOR NEW IMPROVEMENTS.
- CONTRACTOR SHALL PROVIDE TRANSITION GRADING FROM 1/2" BELOW NEW FENCE MOWSTRIP TO ORIGINAL GROUND FOR A SMOOTH TRANSITION.
- CONTRACTOR SHALL REMOVE AND REPLACE IRRIGATION SYSTEM AS REQUIRED FOR THE NEW IMPROVEMENTS.
- PROVIDE MINIMUM OF 2" ADDITIONAL VEGETATION REMOVAL AND GRADING ON EACH SIDE OF MOWSTRIP AS NECESSARY FOR SMOOTH GRADING TRANSITION BETWEEN NEW MOWSTRIP/CONCRETE IMPROVEMENTS AND EXISTING GROUND. IN TURF AREAS REMOVE SOD AND REPLACE AS NECESSARY ON EACH SIDE OF MOWSTRIP. FINISH GRADE SHALL BE 1/2" BELOW CONCRETE.
- CONTRACTOR TO CORE INTO EXISTING CONCRETE WHEN FENCE IS LOCATED WITHIN EXISTING CONCRETE.
- AT EXISTING WALL/BUILDING/STRUCTURAL IMPROVEMENTS, CONTRACTOR SHALL SET FENCE POST A MAXIMUM OF 2" AWAY FROM EXISTING IMPROVEMENTS.
- NO FENCE POST MAY BE INSTALLED UNTIL THE LOCATION HAS BEEN REVIEWED AND APPROVED BY THE ENGINEER.
- AERIAL PHOTO DOES NOT SHOW ALL CURRENT EXISTING CONDITIONS AT PROJECT SITE. CONTRACTOR TO FIELD VERIFY EXISTING CONDITIONS PRIOR TO ANY WORK BEING COMPLETED.
- REMOVE EXISTING IMPROVEMENTS AS NECESSARY TO CONSTRUCT NEW IMPROVEMENTS SHOWN ON THESE PLANS.
 - FOR CONCRETE REMOVAL, REMOVE TO THE NEXT NEAREST TOOLED JOINT OR EXPANSION JOINT OF NEW IMPROVEMENTS DESIGNATED TO REMAIN. IF JOINT DOES NOT EXIST SAWCUT AS NEEDED.
- REPLACE ALL DAMAGED TURF AND IRRIGATION FACILITIES RESULTING FROM THE WORK REQUIRED.
- PAINT ORNAMENTAL FENCE PER COLOR SELECTED BY THE DISTRICT.

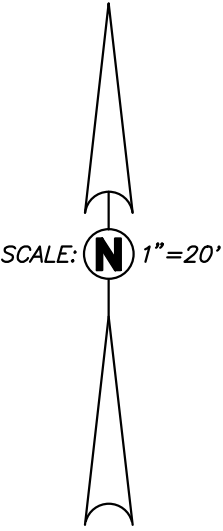
SITE BENCHMARK:

CHISELED CROSS ON TOP OF CURB, APPROXIMATELY 285 FEET SOUTH OF MARTIN STREET, ON THE WEST SIDE OF THE MAIN ENTRANCE TO NISHIMOTO ELEMENTARY SCHOOL AND JACK G. DESMOND MIDDLE SCHOOL.

ELEVATION = 98.29' ASSUMED DATUM

TOPOGRAPHIC SURVEY LEGEND:

- AC ASPHALTIC CONCRETE
- BW BACK OF WALK
- C CONCRETE
- GR GRATE; DIAMETER AS NOTED
- LID LID OF UTILITY STRUCTURE
- RA RAMP
- T TURF
- TC TOP OF CURB
- TW TOP OF WALL
- (335.21) EXISTING GRADE
- AI AUTOMATIC IRRIGATION VALVE
- BO BOLLARD
- CO SEWER CLEANOUT
- SV12.25 SURVEY CONTROL POINT
- CP6 ELECTRICAL PULLBOX
- HB HOSE BIBB
- LP LIGHT POLE
- MH
- TS TREE; SPREAD SHOWN GRAPHICALLY AND TRUNK DIAMETER AS SHOWN
- WV WATER VALVE
- CONCRETE BLOCK WALL
- BUILDING
- LIMITS OF TURF/DIRT
- EDGE OF CONCRETE



ADDENDUM #1 01-30-2015 ALL CHANGES ARE IDENTIFIED BY A REVISION CLOUD

Blair,
Church & Flynn
CONSULTING ENGINEERS

REGISTERED PROFESSIONAL ENGINEER
FRANK SCHUBERT
CIVIL
STATE OF CALIFORNIA
1/5/2015
Date Signed:

CONSULTANT
Blair, Church & Flynn
Consulting Engineers
451 Clovis Avenue,
Suite 200
Clovis, California 93612
Tel (559) 326-1400
Fax (559) 326-1500

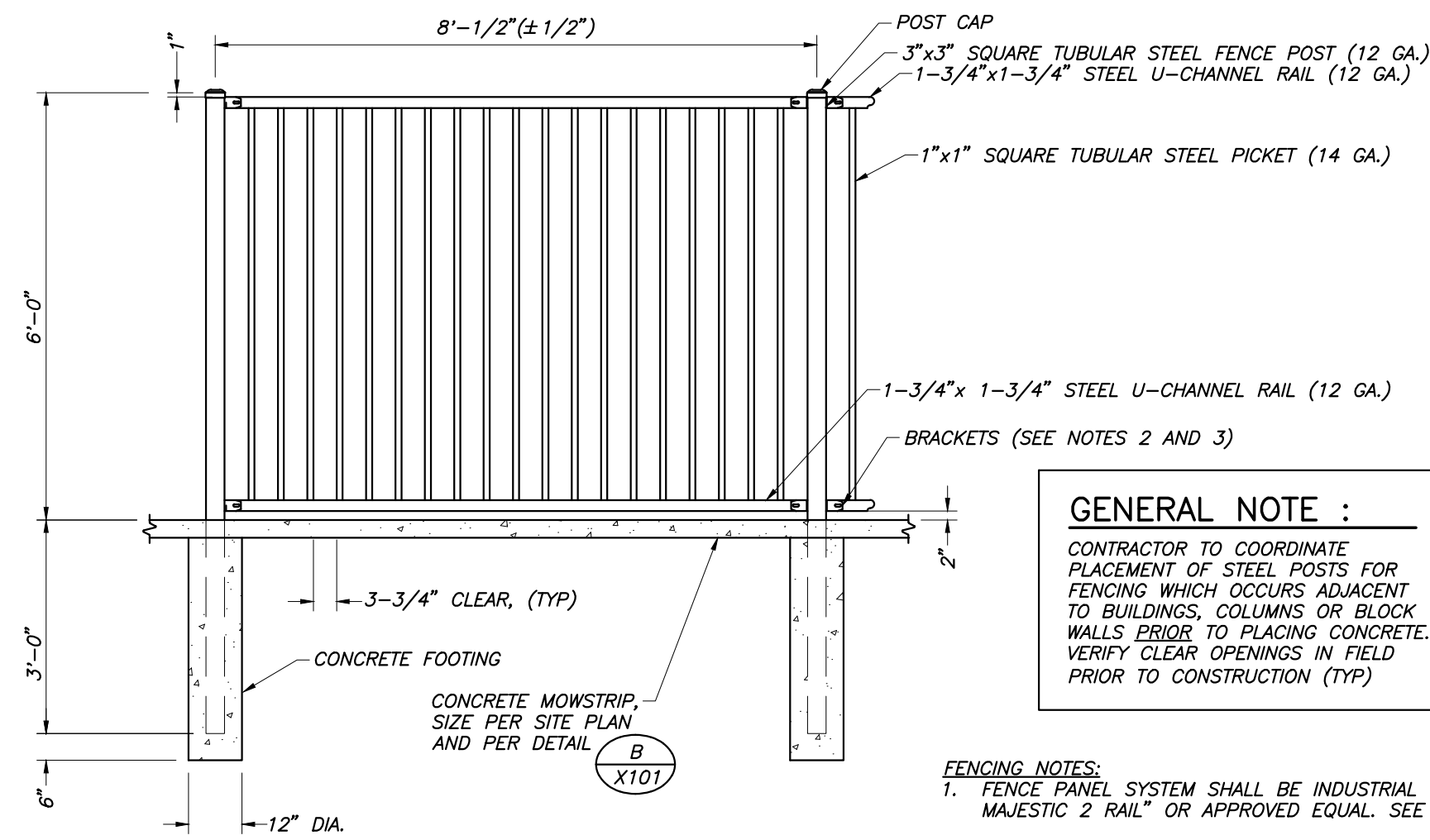
REF. & REV.

MADERA UNIFIED SCHOOL DISTRICT

DESMOND MIDDLE SCHOOL
FENCING IMPROVEMENTS
SITE PLAN

DR. BY: JSD
CH. BY: JS
DATE: 1/5/2015
SCALE: AS NOTED

C201

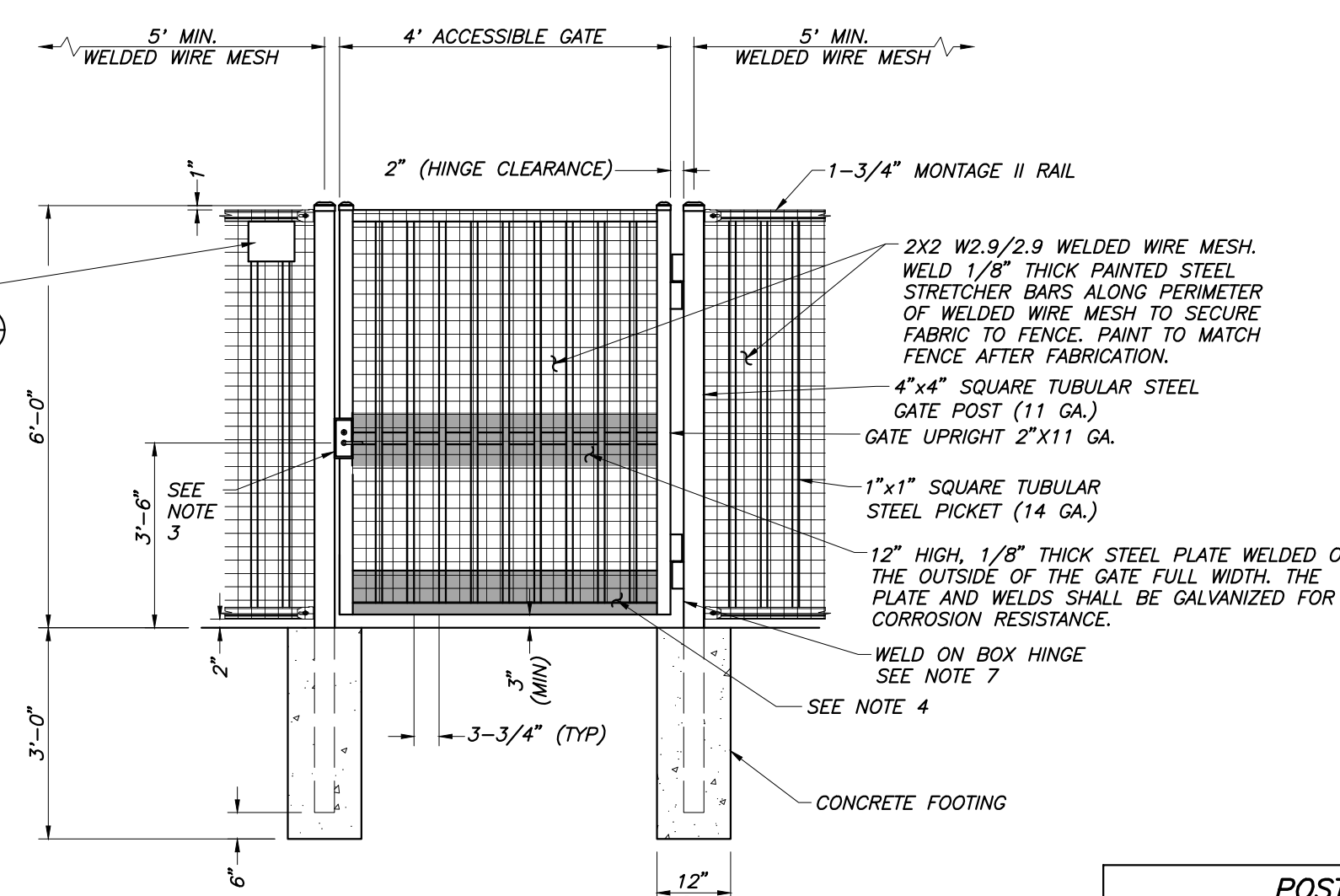


A
X102 ORNAMENTAL FENCE DETAIL
NOT TO SCALE

GENERAL NOTE :

CONTRACTOR TO COORDINATE PLACEMENT OF STEEL POSTS FOR FENCING WHICH OCCURS ADJACENT TO BUILDINGS, COLUMNS OR BLOCK WALLS PRIOR TO PLACING CONCRETE. VERIFY CLEAR OPENINGS IN FIELD PRIOR TO CONSTRUCTION (TYP)

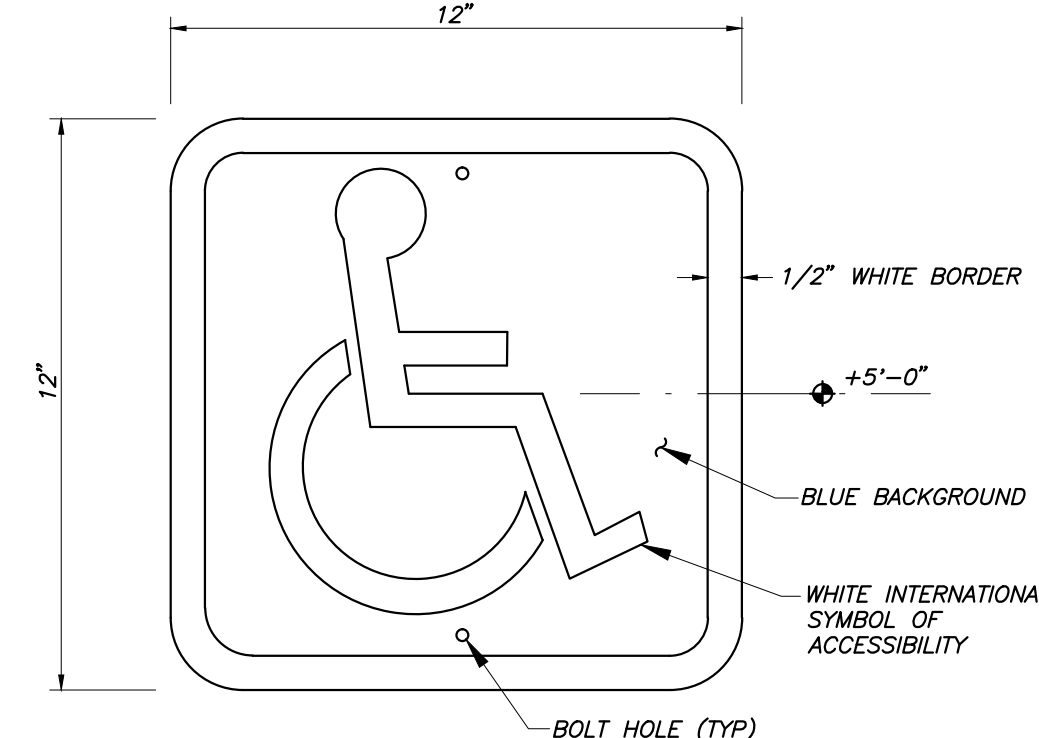
- FENCING NOTES:**
1. FENCE PANEL SYSTEM SHALL BE INDUSTRIAL GRADE "AMERISTAR-MONTAGE II MAJESTIC 2 RAIL" OR APPROVED EQUAL. SEE SPECIFICATIONS
 2. ALL FENCE HARDWARE SHALL BE FROM THE FENCING MANUFACTURER AND INSTALLED PER THE MANUFACTURER'S DETAILS.
 3. COLOR TO MATCH EXISTING SITE ORNAMENTAL FENCING. OWNER TO APPROVE THE COLOR.
 4. CONTRACTOR TO PROVIDE AND INSTALL GATE HOLDBACK FOR EACH GATE. HOLDBACK TO BE INSTALLED IN FENCE MOWSTRIP UNLESS OTHERWISE NOTED.
 5. ORNAMENTAL FENCE SHALL BE PAINTED, SEE SITE PLAN.



- NOTES:**
1. POST SIZE DEPENDS ON FENCE HEIGHT, WEIGHT AND WIND LOADS. SEE SIZING CHART.
 2. SEE AMERISTAR GATE TABLE FOR STANDARD OUT TO OUTS. CUSTOM GATE OPENINGS AVAILABLE FOR SPECIAL OUT TO OUT/LEAF WIDTHS.
 3. PANIC DEVICE, "CORBIN-RUSSWIN" ED8200 X P857 689 AND LOCK, "SCHLAGE" RIM CYLINDER 20-757 (PRIMUS) (IC CORE) 626 OR APPROVED EQUAL PER DETAIL FOR GATES IN EXIT DISCHARGE PATH.
 4. 10" HIGH, 1/8" THICK STEEL PLATES WELDED ON THE INSIDE AND OUTSIDE OF THE BOTTOM FULL WIDTH OF ALL ACCESSIBLE GATES. THE KICK PLATE AND WELDS SHALL BE PAINTED/POWDER COATED TO MATCH FENCE FOR CORROSION RESISTANCE.
 5. CONTRACTOR TO PROVIDE AND INSTALL GATE HOLDBACK FOR EACH GATE. HOLDBACK TO BE INSTALLED IN FENCE MOWSTRIP UNLESS OTHERWISE NOTED.
 6. SEE FENCING NOTES TO LEFT.
 7. PUSH/PULL OPENING FORCE SHALL BE 5 LBS. MAX.
 8. ORNAMENTAL FENCE SHALL BE PAINTED, SEE SITE PLAN.

| POST SIZING CHART | |
|-------------------|--|
| GATE LEAF | GATE HEIGHT OVER 6' UP TO & INCLUDING 8' |
| UP TO 4' | 3"x12" GA. |
| 4'-1" TO 6' | 4"x11" GA. |

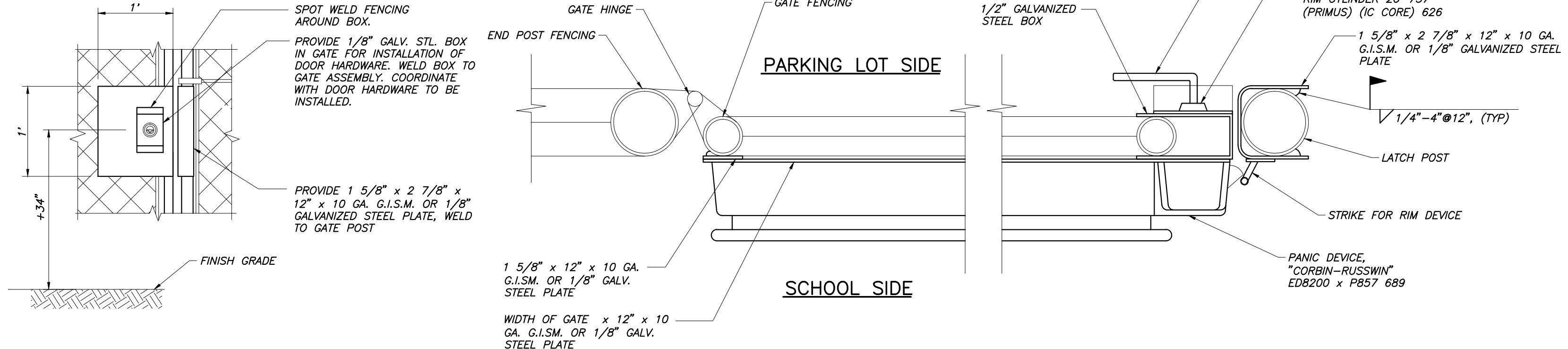
B
X102 4' WIDE ORNAMENTAL WALK GATE
NOT TO SCALE



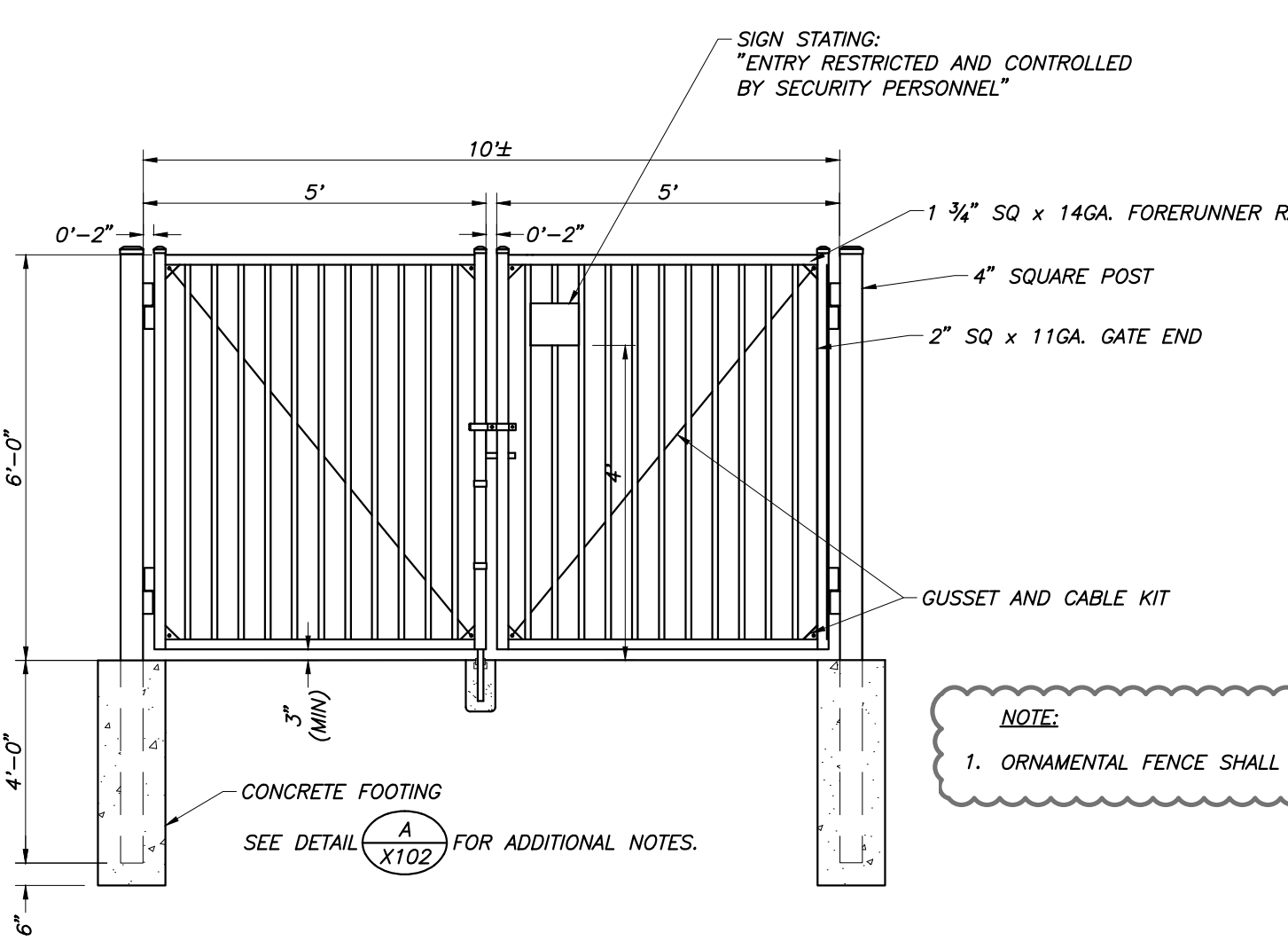
SIGN BY "STOP SIGNS AND MORE", MODEL SKU-PAR-1124 WITH WEATHER AND GRAFFITI PROTECTION OR APPROVED EQUAL.

BACKING PLATE 12"x12"x16 GAUGE METAL PLATE, SANDWICH CHAIN LINK FABRIC BETWEEN SIGN AND BACKING PLATE. FASTEN TOGETHER WITH TAMPER RESISTANT THRU BOLTS SIMILAR TO DETAIL F X101.

C
X102 ENTRY ACCESSIBILITY SIGN
NO SCALE



D
X102 PANIC HARDWARE AT WALK GATE
NOT TO SCALE



E
X102 ORNAMENTAL DRIVE GATE
NOT TO SCALE

ADDENDUM #1 01-30-2015 ALL CHANGES ARE IDENTIFIED BY A REVISION CLOUD

Blair, Church & Flynn
CONSULTING ENGINEERS
451 Clovis Avenue, Suite 200
Clovis, California 93612
Tel (559) 326-1400
Fax (559) 326-1500

1/5/2015
Date Signed: _____

MADERA UNIFIED SCHOOL DISTRICT

DESMOND MIDDLE SCHOOL
FENCING IMPROVEMENTS
DETAILS

DR. BY: JSD
CH. BY: JSD
DATE: 1/5/2015
SCALE: AS NOTED

X102