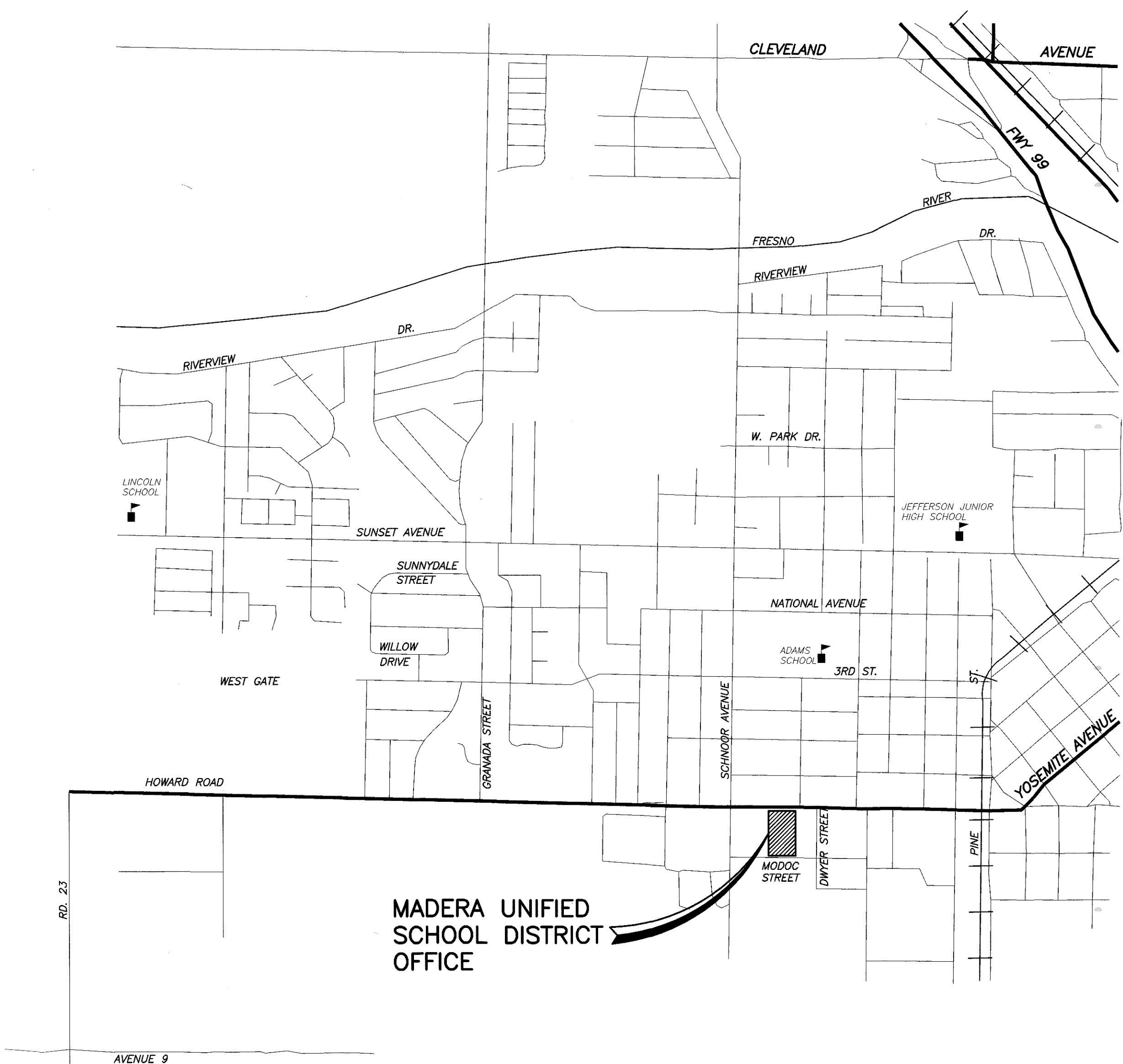


MADERA UNIFIED SCHOOL DISTRICT

EDWARD GONZALEZ, DISTRICT SUPERINTENDENT

PLANS FOR THE CONSTRUCTION OF PARKING LOT RECONSTRUCTION AT MADERA UNIFIED SCHOOL DISTRICT OFFICE BID NO.



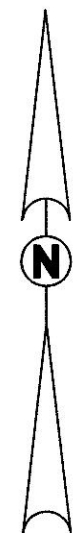
LOCATION MAP

NOT TO SCALE

GENERAL NOTES:

- ALL WORK SHALL BE DONE IN ACCORDANCE WITH THESE CONSTRUCTION PRACTICES, THE CONTRACT SPECIFICATIONS AND, WHERE APPLICABLE, THE STATE OF CALIFORNIA STANDARD SPECIFICATIONS AND CITY OF MADERA STANDARDS.
- THE CONTRACTOR SHALL COORDINATE ALL CONSTRUCTION ACTIVITIES WITH THE SCHOOL DISTRICT'S USE OF THE FACILITIES AND OTHER CONTRACTORS WHO MAY BE DOING CONSTRUCTION WITHIN THE PROJECT SITE.
- THE CONTRACTOR SHALL CONTACT DISTRICT OFFICIALS FOR DETERMINATION OF DEPTH AND LOCATION OF UNDERGROUND UTILITIES PRIOR TO EXCAVATION IN THE PROJECT SITE.
- THE CONTRACTOR SHALL PROTECT ALL EXISTING IMPROVEMENTS, UTILITIES AND LANDSCAPING NOT DESIGNATED FOR REMOVAL.
- NO CONSTRUCTION STAKING WILL BE PROVIDED TO THE CONTRACTOR BY THE DISTRICT. THE CONTRACTOR SHALL RETAIN A SURVEYOR OR CIVIL ENGINEER TO PROVIDE STAKING. SEE SPECIFICATIONS.
- ALL FORMS SHALL BE INSPECTED AND SURVEYED PRIOR TO POURING CONCRETE.
- PRIOR TO APPLICATION OF SEAL COAT AND STRIPING THE CONTRACTOR SHALL PERFORM WATER TESTING OF NEW PAVEMENT TO SATISFACTION OF OWNER AND PROJECT INSPECTOR.
- ALL WORK WITHIN PUBLIC RIGHT-OF-WAY SHALL BE DONE PER CITY OF MADERA STANDARDS. ENCROACHMENT PERMIT IS REQUIRED.

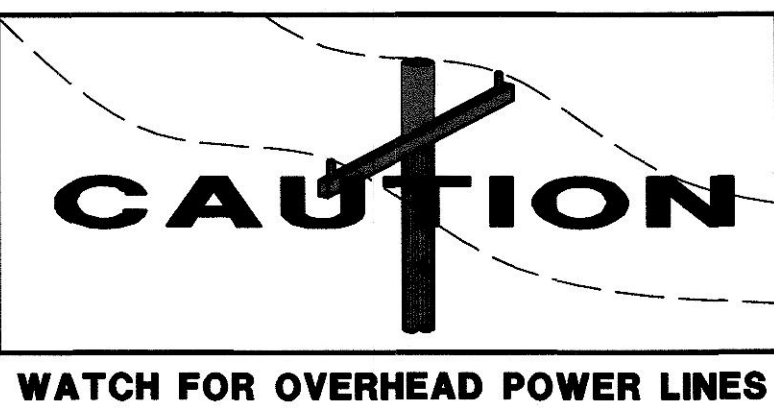
CONTRACTOR AGREES THAT IN ACCORDANCE WITH GENERALLY ACCEPTED CONSTRUCTION PRACTICES, CONTRACTOR ASSUMES SOLE AND COMPLETE RESPONSIBILITY FOR JOB SITE CONDITIONS DURING THE PERFORMANCE OF WORK, INCLUDING SAFETY OF ALL PERSONS AND PROPERTY, ON A CONTINUOUS BASIS NOT LIMITED TO NORMAL WORKING HOURS. CONTRACTOR FURTHER AGREES TO DEFEND, INDEMNIFY AND HOLD HARMLESS BLAIR, CHURCH & FLYNN CONSULTING ENGINEERS FROM ANY AND ALL LIABILITY, REAL OR ALLEGED, IN CONNECTION WITH THE PERFORMANCE OF WORK ON THIS PROJECT, EXCEPTING LIABILITY ARISING FROM THE SOLE NEGLIGENCE OF BLAIR, CHURCH & FLYNN CONSULTING ENGINEERS.



GENERAL NOTES

THE REQUIREMENTS AND INFORMATION SET OUT BELOW ARE PROVIDED FOR THE CONTRACTOR'S CONVENIENCE AND DO NOT ENCOMPASS ALL PROJECT REQUIREMENTS DESCRIBED BY THE PROJECT PLANS AND SPECIFICATIONS AND/OR APPLICABLE LAWS, REGULATIONS AND/OR BUILDING CODES.

- ALL WORK SHALL CONFORM TO THE PROVISIONS OF THE CITY OF MADERA STANDARD DRAWINGS AND SPECIFICATIONS, LATEST EDITION.
- THE CONTRACTOR SHALL FURNISH ALL NECESSARY MATERIALS, LABOR, EQUIPMENT, TOOLS AND INCIDENTALS, AND SHALL DO ALL WORK NECESSARY TO CONSTRUCT ALL OF THE PROPOSED IMPROVEMENTS SHOWN OR SPECIFIED ON THE PLANS OR IN THE SPECIFICATIONS, WITH THE EXCEPTIONS OF EXISTING IMPROVEMENTS AND THOSE IMPROVEMENTS SPECIFICALLY SHOWN OR SPECIFIED AS "FUTURE" OR AS "BY OTHERS".
- UTILITIES SHOWN ARE TAKEN FROM THE TOPOGRAPHIC BASE, MAPS AND PLAN DRAWINGS PROVIDED BY UTILITY COMPANIES OR AGENCIES, AND/OR FIELD SURVEYS AND INVESTIGATIONS. THEIR DEPICTION IS BASED ON THE BEST INFORMATION AVAILABLE AT THE TIME THESE DRAWINGS WERE PREPARED. HOWEVER, IT IS POSSIBLE THAT OTHER OR ADDITIONAL UTILITIES MAY EXIST THAT WERE NOT REVEALED BY THAT INFORMATION.
- WORK SHALL BE DONE IN ACCORDANCE WITH THE 2022 EDITION OF THE STATE OF CALIFORNIA DEPARTMENT OF TRANSPORTATION STANDARD PLANS AND SPECIFICATIONS, THE CALIFORNIA MANUAL ON UNIFORM TRAFFIC CONTROL DEVICES (CA MUTCD), DATED JANUARY 21, 2014 AND ALL AMENDMENTS, AND THE LATEST EDITION OF THE CITY OF MADERA STANDARD PLANS AND SPECIFICATIONS.
- THE CONTRACTOR IS RESPONSIBLE FOR VERIFICATION OF ALL EXISTING UTILITIES, WHETHER OR NOT THEY ARE SHOWN ON THESE PLANS, AND SHALL PROVIDE PROTECTION PRIOR TO, DURING AND AFTER TRENCHING, JACKING AND/OR BORING. THE CONTRACTOR SHALL CONTACT UNDERGROUND SERVICE ALERT (USA), TOLL FREE AT (800) 642-2444, AT LEAST 48 HOURS BEFORE BEGINNING WORK.
- THE CONTRACTOR SHALL OBTAIN ALL PERMITS REQUIRED TO PERFORM THE WORK AND HE SHALL ABIDE BY THE CONDITIONS OF THE PERMITS AND SHALL PERFORM ALL WORK ORDERED BY SAID PERMITS IN CONFORMANCE THEREWITH AND AS DIRECTED BY THE ENGINEER.
- TRAFFIC CONTROL PLANS SHALL CONFORM TO THE STATE OF CALIFORNIA MANUAL OF TRAFFIC CONTROLS FOR CONSTRUCTION AND MAINTENANCE WORK ZONES. (LATEST EDITION).
- THE CONTRACTOR SHALL NOTIFY ALL RESIDENCES AND BUSINESSES AFFECTED BY THE WORK OF THIS CONTRACT 48 HOURS PRIOR TO THE BEGINNING OF CONSTRUCTION. THE CONTRACTOR SHALL PROVIDE EVIDENCE TO THE CITY WHEN SUCH NOTIFICATION HAS BEEN MADE.
- THE CONTRACTOR SHALL VERIFY ALL HORIZONTAL MEASUREMENT AND VERTICAL GRADES PRIOR TO MOBILIZATION. IF DIFFERENCES ARE DISCOVERED, THE CITY SHALL BE IMMEDIATELY NOTIFIED TO RESOLVE THE DIFFERENCES BEFORE MOBILIZATION.
- CONSTRUCTION OF ALL PROJECT SITE IMPROVEMENTS SUBJECT TO ADA ACCESS COMPLIANCE, INCLUDING ACCESSIBLE PATH OF TRAVEL, CURB RETURNS, PARKING STALL(S) AND UNLOADING AREAS, BARRIER FREE AMENITIES AND/OR OTHER APPLICABLE SITE IMPROVEMENTS SHALL CONFORM TO THE AMERICANS WITH DISABILITIES ACT, CALIFORNIA TITLE 24, AND THE CALIFORNIA BUILDING CODE, CURRENT EDITION(S).
- CONTRACTOR SHALL FIELD VERIFY ALL GRADES AND SLOPES PRIOR TO THE PLACEMENT OF CONCRETE AND/OR PAVEMENT FOR CONFORMANCE WITH ADA ACCESS COMPLIANCE REQUIREMENTS. EXAMPLES OF MINIMUM AND MAXIMUM LIMITS RELATED TO ADA ACCESS COMPLIANCE INCLUDE, BUT ARE NOT LIMITED TO:
 - ACCESSIBLE PATH OF TRAVEL CROSS-SLOPE SHALL NOT EXCEED 2.00%
 - ACCESSIBLE PATH OF TRAVEL LONGITUDINAL SLOPES SHALL NOT EXCEED 5.00%
 - RAMP LONGITUDINAL SLOPES SHALL NOT EXCEED 8.33%
 - WALKS SHALL NOT HAVE LESS THAN 48 INCHES IN UNOBSTRUCTED WIDTH
- CONTRACTOR MUST IMMEDIATELY NOTIFY THE ENGINEER OF RECORD, IDENTIFIED BY THE PROFESSIONAL ENGINEERING SEAL AND SIGNATURE ON THESE PLANS, OF ANY SITE CONDITION(S) AND/OR DESIGN INFORMATION THAT PREVENTS THE CONTRACTOR FROM COMPLYING WITH THE LAWS, REGULATIONS AND/OR BUILDING CODES GOVERNING ADA ACCESS COMPLIANCE.
- DRAINAGE SHALL NOT BE ALLOWED ONTO ADJACENT PROPERTY.
- THE CONTRACTOR SHALL IMPLEMENT DUST CONTROL MEASURES AS REQUIRED BY THE PROJECT SPECIFICATIONS, AND BY GOVERNING PUBLIC AGENCIES.



SITE MAP

NOT TO SCALE

PROJECT INFORMATION:

OWNER: MADERA UNIFIED SCHOOL DISTRICT
SITE ADDRESS: 1902 HOWARD ROAD MADERA, CA 93637
FLOOD MAP: FM06039C1155E
FLOOD ZONE: ZONE X OUTSIDE THE 0.2% ANNUAL CHANCE FLOODPLAIN

DESCRIPTION OF PROJECT:

- THIS PROJECT INCLUDES, BUT IS NOT NECESSARILY LIMITED TO:
- REMOVAL AND REPLACEMENT OF ASPHALT CONCRETE PAVEMENT SECTION.
 - CONSTRUCTION OF CONCRETE SLAB, SIDEWALK, RAMP, VALLEY GUTTERS, WHEEL STOPS AND STORM DRAIN STRUCTURES.
 - INSTALLATION OF ACCESSIBLE SIGNAGE AND PAVEMENT STRIPING.

CITY OF MADERA ENGINEERING DEPARTMENT 205 WEST 4th STREET MADERA, CALIFORNIA 93637		SHEET OF SHEETS	
		APPROVAL	DATE
		CITY ENGINEER	
		PUBLIC WORKS	
		PARKS DEPT.	
		FIRE DEPT.	
DESIGNED BY		CHECKED BY	
DRAWN BY		INSPECTED BY	
CONST. DATES		STARTED	COMPLETED
CONTRACTOR			
WORK ORDER NO.		DRAWING NO.	

SHEET	OF	SHEETS
APPROVAL		DATE
CITY ENGINEER		12-4-24
DRAWING NO.		

For parking lot, driveway approach reconstruction and storm drain only. RFA



Know what's below.
Call before you dig.

Blair,
Church
& Flynn

CONSULTING ENGINEERS

REGISTERED PROFESSIONAL ENGINEER
LATE R. BADRY
1947-47/053
CIVIL
STATE OF CALIFORNIA

11-1-24
Date Signed

CONSULTANT

Blair, Church & Flynn
Consulting Engineers
451 Clovis Avenue,
Suite 200
Clovis, California 93612
Tel (559) 326-1400
Fax (559) 326-1500

REF. & REV.

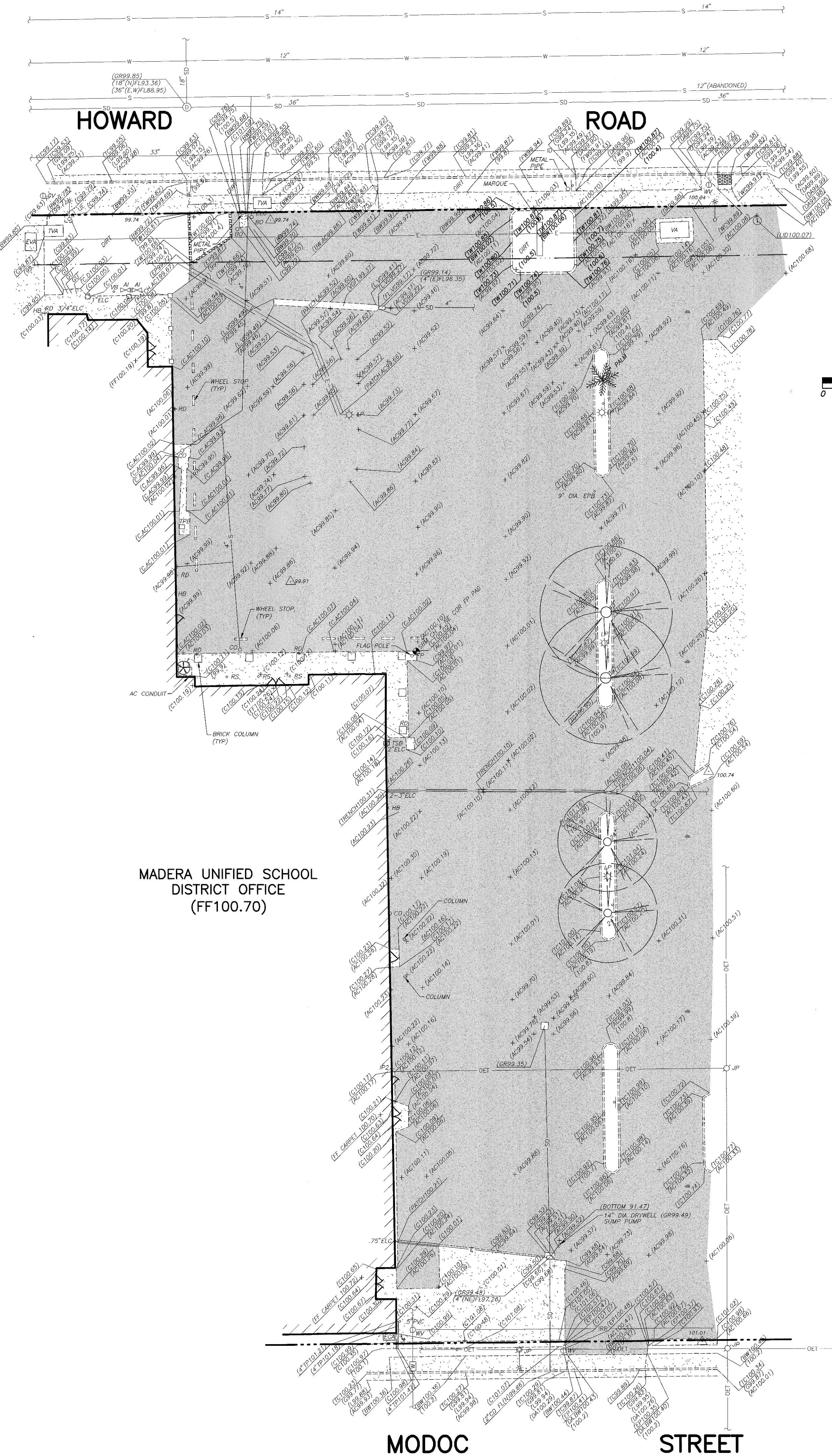
MADERA UNIFIED SCHOOL DISTRICT

PARKING LOT RECONSTRUCTION
MADERA UNIFIED SCHOOL DISTRICT OFFICE

TITLE AND LOCATION MAP

DR. BY: JRS
CH. BY: RFA
DATE: 06-18-2016
SCALE: AS NOTED

C0.0



LEGEND:

AC	ASPHALTIC CONCRETE
ACC	ASPHALTIC CONCRETE = CONCRETE
BW	BACK OF WALK
BWAC	BACK OF WALK = ASPHALTIC CONCRETE
C	CONCRETE
CAC	CONCRETE = ASPHALTIC CONCRETE
C.D	CONCRETE = DIRT
CD	CROSS DRAIN
DA	DRIVE APPROACH
DAW	DRIVE APPROACH = BACK OF WALK
DIA	DIAMETER
E	EAST
ECA	ELECTRIC CABINET
EM	ELECTRIC METER
EP	EDGE OF PAVEMENT
EPB	ELECTRIC PULLBOX
EVA	ELECTRIC VAULT
FF	FINISHED FLOOR
FL	FLOWLINE
FW	FRONT OF WALK
G	GUTTER
GR	GRATE; DIAMETER AS NOTED
L	LIP OF GUTTER
LVG	LIP OF GUTTER = VALLEY GUTTER
LID	LID OF UTILITY STRUCTURE
N	NORTH OR NORTHING
NE	NORTHEAST
PATCH AC	ASPHALTIC CONCRETE PATCHING
GU	GAS UTILITY BOX
TC	TOP OF CURB
TP	TOP OF PIPE
TVA	TELEPHONE VAULT
(TYP)	TYPICAL
TW	TOP OF WALL
VA	VAULT
VB	VACUUM BREAKER
VGFL	VALLEY GUTTER FLOWLINE
WC	WHEELCHAIR RAMP

(100.67)	EXISTING ELEVATION
SBM	SITE BENCHMARK
D-3 AV	AUTO IRRIGATION VALVE
BO	BOLLARD
CO	SEWER CLEANOUT
SOI.01	SURVEY CONTROL POINT
ELC	ELECTRICAL CONDUIT
FP	FLAG POLE
4"GR	GRATE; DIAMETER AS SHOWN
DV	GAS VALVE
HB	HOSE BIBB
IP	IRON PIPE
JP	JOINT POLE
LP	LIGHT POLE
6" PVC	PVC PIPE; DIAMETER AS SHOWN
RD	ROOF DRAIN
RS	ROOF SUPPORT
SIGN	SIGN
STREET LIGHT	STREET LIGHT
TMH	TELEPHONE MANHOLE
TPB	TELEPHONE PULLBOX
TREE; SPREAD SHOWN GRAPHICALLY AND TRUNK DIAMETER AS SHOWN	TREE; SPREAD SHOWN GRAPHICALLY AND TRUNK DIAMETER AS SHOWN
TSPB	TELEPHONE SPLICE BOX
WV	WATER VALVE
AC PAVING IMPROVEMENTS	AC PAVING IMPROVEMENTS
BUILDING	BUILDING
CONCRETE IMPROVEMENTS	CONCRETE IMPROVEMENTS
TRUNCATED DOMES	TRUNCATED DOMES
EDGE OF ASPHALT CONCRETE PAVEMENT	EDGE OF ASPHALT CONCRETE PAVEMENT
FUTURE RIGHT-OF-WAY LINE	FUTURE RIGHT-OF-WAY LINE
RIGHT-OF-WAY LINE	RIGHT-OF-WAY LINE
E	UNDERGROUND ELECTRIC
S 4"	SEWER LINE; SIZE AS NOTED
SD 18"	STORM DRAIN LINE; SIZE AS NOTED
W 8"	WATER LINE; SIZE AS NOTED
3.3"	IRRIGATION DISTRICT LINE
OET	OVERHEAD ELECTRIC & TELEPHONE LINE
T	UNDERGROUND TELEPHONE LINE

SITE BENCHMARK:

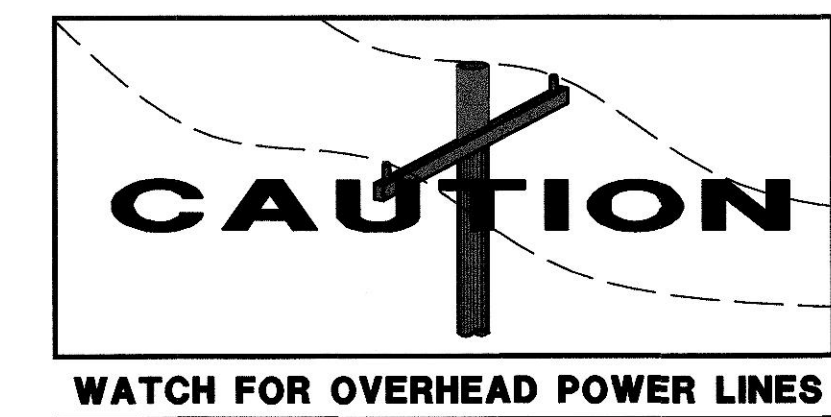
CHISELED X ON NORTHEAST CORNER OF FLAG POLE CONCRETE PAD NEAR THE NORTHEAST CORNER OF THE DISTRICT OFFICE.
ELEVATION = 100.02 ASSUMED DATUM

NOTE:

THIS TOPOGRAPHIC SURVEY LOCATES SPECIFIC PHYSICAL FEATURES OF THE SITE AND THEIR ELEVATION AS DETERMINED NECESSARY BY THE PROJECT ENGINEER. IT IS NOT A COMPLETE TOPOGRAPHIC SURVEY OF THE SITE. THE INFORMATION SHOWN REFLECTS THE DATA OBTAINED BY FIELD SURVEY CONDUCTED ON AUGUST 8 TO AUGUST 10, 2012.

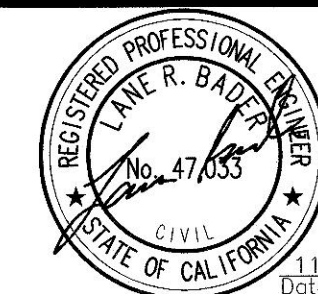
UTILITY NOTE:

UTILITY INFORMATION SHOWN HEREON IS BASED ON RECORD INFORMATION SUPPLIED TO THE ENGINEER BY UTILITY COMPANIES, PUBLIC AGENCIES AND THE PROPERTY OWNER, TOGETHER WITH OBSERVATION OF VISIBLE EVIDENCE BY A FIELD SURVEY. THE ENGINEER CAN MAKE NO GUARANTEE AS TO THE ACCURACY OR COMPLETENESS OF THE UNDERGROUND UTILITY FACILITIES SHOWN. PRIOR TO ANY SITE EXCAVATIONS, THE CONTRACTOR SHALL CONTACT THE OWNER AND UNDERGROUND SERVICE ALERT (USA) AND REQUEST THAT THEY IDENTIFY THE LOCATION OF ALL UNDERGROUND UTILITIES AT THE SITE.



SHEET	OF	SHEETS
APPROVAL		DATE
CITY ENGINEER	12-4-24	
DRAWING NO.		

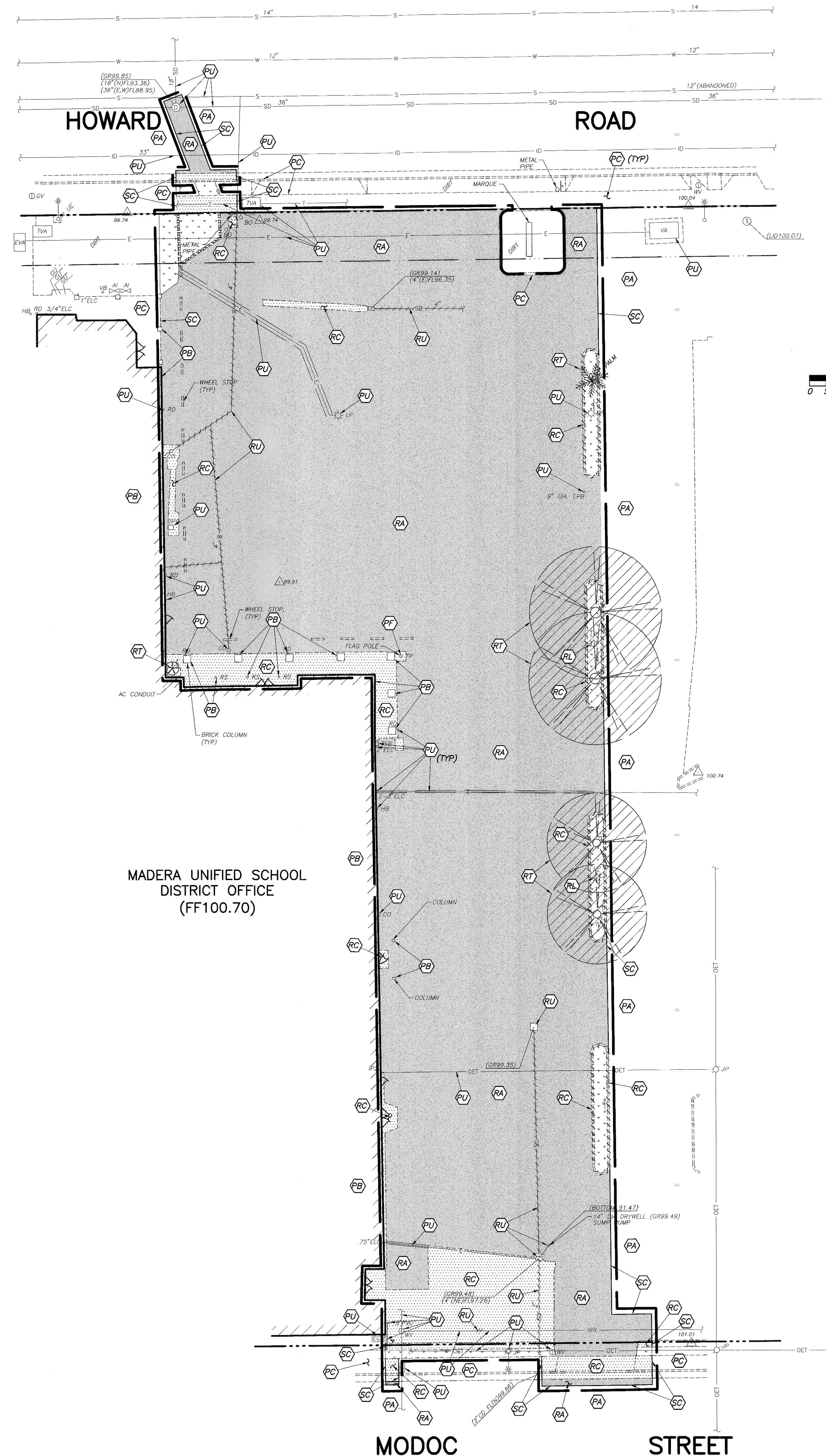
Blair,
Church
& Flynn
CONSULTING ENGINEERS



CONSULTANT
Blair, Church & Flynn
Consulting Engineers
454 Clinton Avenue
Suite 200
Clovis, California 93612
Tel (559) 326-1400
Fax (559) 326-1500

REF. & REV.

MADERA UNIFIED SCHOOL DISTRICT	
PARKING LOT RECONSTRUCTION MADERA UNIFIED SCHOOL DISTRICT OFFICE	
TOPOGRAPHIC SURVEY	
DR. BY: JRS	C1.0
CH. BY: JRS	
DATE: 06-16-2018	
SCALE: AS NOTED	



MADERA UNIFIED SCHOOL
DISTRICT OFFICE
(FF100.70)

MODOC

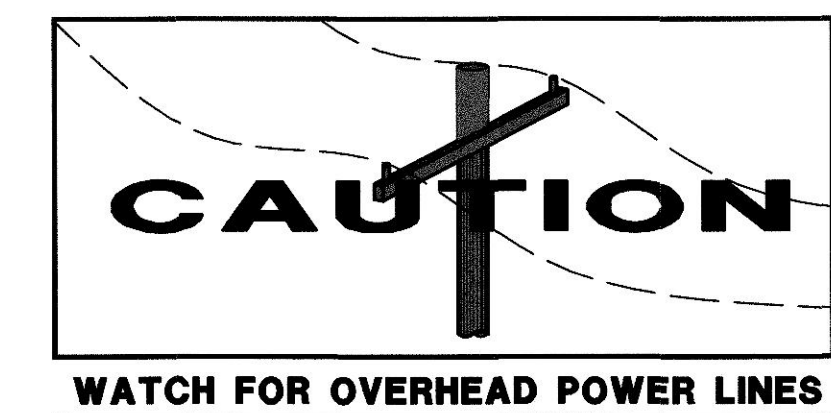
STREET

DEMOLITION LEGEND:

- REMOVE EXISTING IMPROVEMENTS AS NECESSARY TO CONSTRUCT NEW IMPROVEMENTS SHOWN ON THESE PLANS UNLESS OTHERWISE NOTED ON THE PLAN. THE REMOVAL OF IMPROVEMENTS MUST BE COORDINATED WITH ALL PLAN SHEETS. CONTRACTOR MUST ALSO COORDINATE REMOVAL OF IMPROVEMENTS WITH UTILITY AGENCIES. PROTECT ALL IMPROVEMENTS NOT DESIGNATED FOR REMOVAL. SEE NOTE 1
- LIMITS OF CONCRETE IMPROVEMENT REMOVAL
LIMITS OF ASPHALTIC CONCRETE IMPROVEMENT REMOVAL
LIMITS OF TURF REMOVAL
LIMITS OF BRICK PAVER REMOVAL
- REMOVE TREE
- PA PROTECT ASPHALT CONCRETE PAVEMENT TO REMAIN
PB PROTECT BUILDING TO REMAIN
PC PROTECT CONCRETE IMPROVEMENTS TO REMAIN
PF PROTECT FLAG POLE TO REMAIN
PS PROTECT SHADE STRUCTURE SUPPORT TO REMAIN
PU PROTECT UTILITY TO REMAIN
RA REMOVE AND LAWFULLY DISPOSE OF ASPHALT CONCRETE PAVEMENT STRUCTURAL SECTION
RC REMOVE AND LAWFULLY DISPOSE OF CONCRETE IMPROVEMENTS
RT REMOVE AND LAWFULLY DISPOSE OF TREE AND ROOTS
RL REMOVE UTILITY/LIGHT POLES, SALVAGE TO OWNER, COORDINATE WITH ELECTRICAL PLANS
RU REMOVE AND LAWFULLY DISPOSE OF UTILITY
RW REMOVE AND LAWFULLY DISPOSE OF WHEEL STOPS
SC SAWCUT
- LIMIT OF STORM DRAIN LINE REMOVAL
LIMITS OF SEWER LINE REMOVAL

GENERAL DEMOLITION NOTES:

- THE "LIMIT OF DEMOLITION" SHOWN IS APPROXIMATE AND IS GENERALLY CONSIDERED TO BE THE MINIMUM REMOVAL REQUIREMENTS. CONTRACTOR MUST COORDINATE AS NOTED IN THE LEGEND.
- CONTRACTOR SHALL LEGALLY DISPOSE OF ALL DEMOLISHED MATERIALS OFF SITE.
- CONTRACTOR SHALL PROTECT ALL EXISTING UTILITY IMPROVEMENTS NOT SPECIFICALLY DESIGNATED FOR REMOVAL.
- THE ON-SITE UNDERGROUND UTILITIES SHOWN ON THIS SHEET ARE AT APPROXIMATE LOCATIONS. THE EXTENT, LOCATIONS AND SIZES ARE UNKNOWN. THE CONTRACTOR SHALL POthOLE TO LOCATE AND VERIFY THE UNDERGROUND UTILITY LINES PRIOR TO REMOVAL.
- CONTRACTOR TO PROTECT AND PRESERVE IN PLACE ANY FOUND SURVEY MONUMENTS. ANY MONUMENTS DISTURBED SHALL BE RESET BY A CALIFORNIA LICENSED SURVEYOR AND THE APPROPRIATE PAPERWORK FILED WITH THE CITY OR COUNTY, AT CONTRACTOR'S EXPENSE.
- ALL HAZARDOUS MATERIALS ENCOUNTERED DURING SITE DEMOLITION SHALL BE REMEDIATED AND DISPOSED OF PER STATE AND EPA REQUIREMENTS.
- CONTRACTOR SHALL CONTACT AND COORDINATE WITH ALL UTILITY AGENCIES PRIOR TO THE START OF ANY DEMOLITION OR CONSTRUCTION.
- ANY EXISTING UTILITIES AND/OR IMPROVEMENTS WHICH ARE TO REMAIN, THAT BECOME DAMAGED DURING CONSTRUCTION SHALL BE COMPLETELY RESTORED TO THE SATISFACTION OF THE OWNER AND AGENCY HAVING AUTHORITY, AT THE CONTRACTOR'S SOLE EXPENSE.
- REMOVE EXISTING IMPROVEMENTS AS NECESSARY TO CONSTRUCT NEW IMPROVEMENTS SHOWN ON THESE PLANS.
 - FOR CONCRETE REMOVAL, REMOVE TO THE NEXT NEAREST TOOLED JOINT OR EXPANSION JOINT OF IMPROVEMENTS DESIGNATED TO REMAIN.
 - FOR ASPHALTIC PAVEMENT REMOVAL, SAWCUT TO A STRAIGHT, CLEAN EDGE AT LOCATIONS INDICATED ON THE PLANS.
- STRIP AND STOCKPILE TOPSOIL FOR RE-USE PER SPECIFICATIONS.
- PERMITS ARE REQUIRED FOR ALL WORK WITHIN CITY OF MADERA.
- COORDINATE WITH SITE PLAN PRIOR TO ANY DEMOLITION ACTIVITIES.
- SEE ELECTRICAL PLANS FOR REMOVAL OF ELECTRICAL CONDUIT AND CONDUCTORS, (TYP).



SHEET	OF	SHEETS
APPROVAL		DATE
CITY ENGINEER	RAH	12-4-24
DRAWING NO.		

Blair,
Church
& Flynn
CONSULTING ENGINEERS



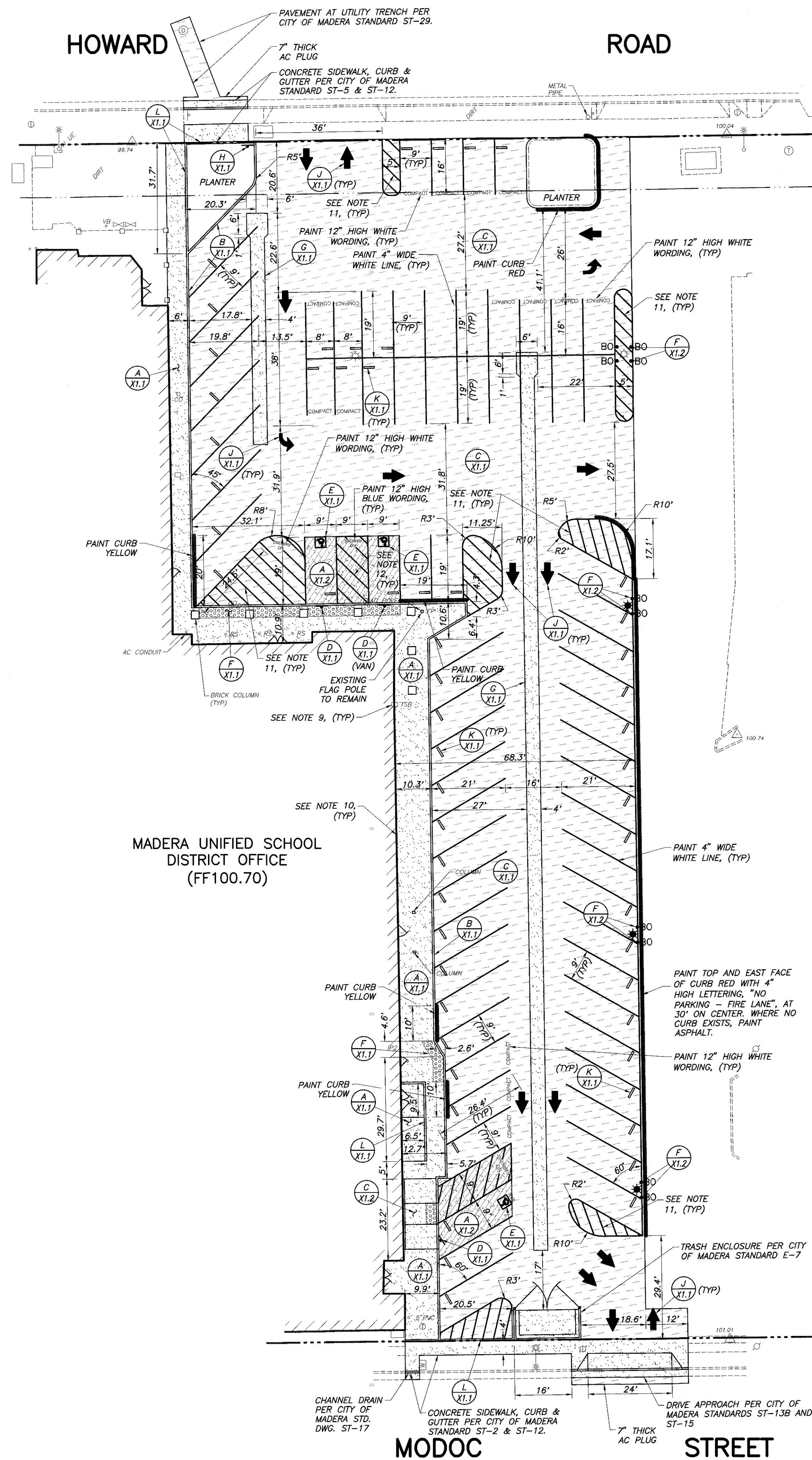
CONSULTANT
Blair, Church & Flynn
Consulting Engineers
454 Davis Avenue
Suite 200
Olive, California 93812
Tel (559) 326-1400
Fax (559) 326-1500

REF. & REV.

MADERA UNIFIED SCHOOL DISTRICT
PARKING LOT RECONSTRUCTION
MADERA UNIFIED SCHOOL DISTRICT OFFICE
DEMOLITION PLAN

DR. BY: JRS
CH. BY: JRS
DATE: 06-18-2016
SCALE AS NOTED

C2.0

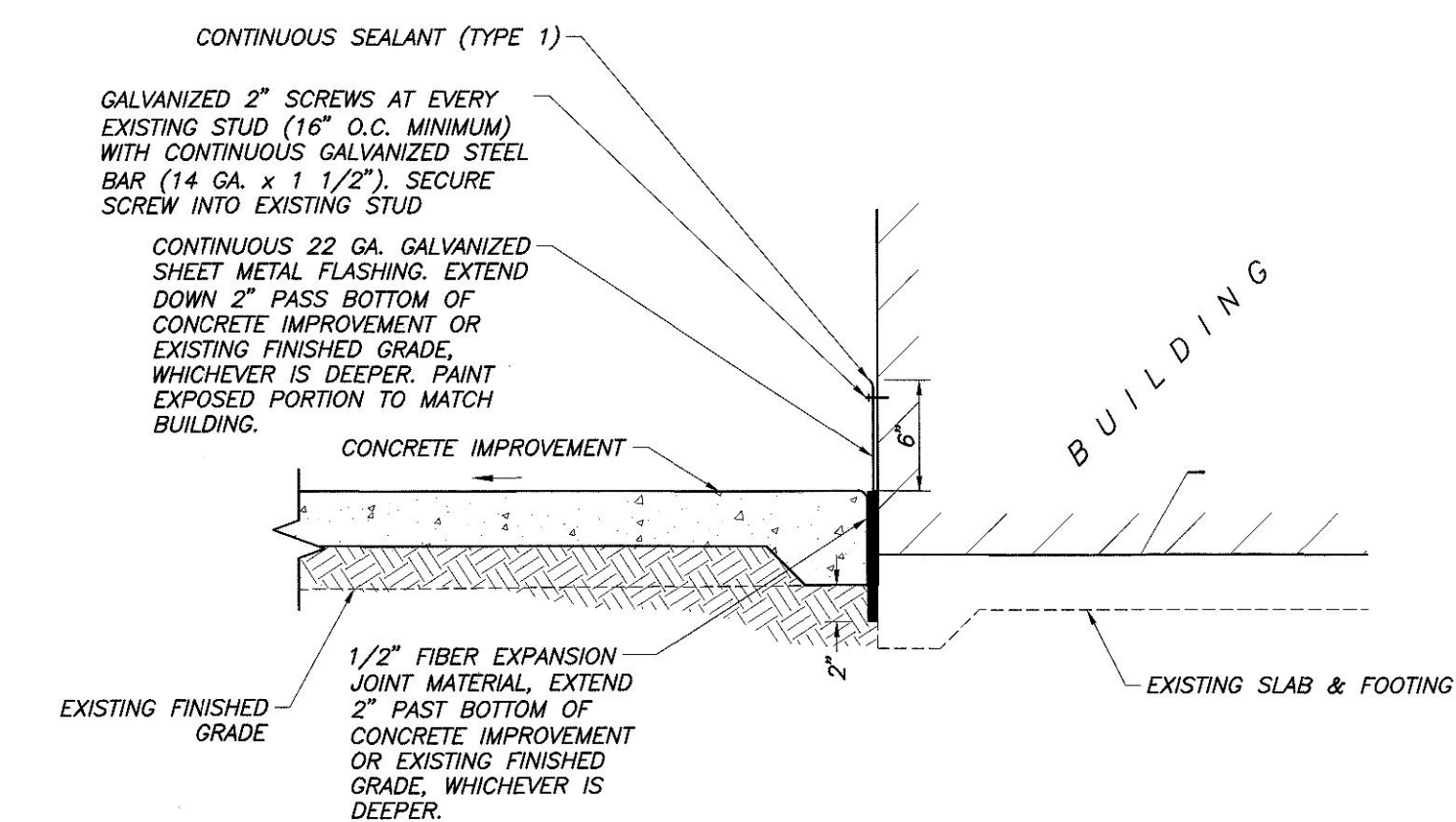


LEGEND:

- LIMITS OF PAINTED CURB OR FIRE LANE MARKING
- LIMITS OF NEW HEAVY DUTY CONCRETE IMPROVEMENTS
- LIMITS OF NEW CONCRETE IMPROVEMENTS
- LIMITS OF NEW ASPHALT CONCRETE STRUCTURAL SECTION
- SITE LIGHTING, SEE ELECTRICAL SHEETS
- BOLLARD PER DETAIL (F X1.2)

CONSTRUCTION NOTES:

- THE CONTRACTOR IS RESPONSIBLE FOR LAYING OUT ALL PAVEMENT MARKINGS. COORDINATE WITH OWNER.
- ALL EXISTING PAVING AND CONCRETE IMPROVEMENTS NOT DESIGNATED FOR REMOVAL MUST BE PROTECTED AT ALL TIMES.
- CONTRACTOR IS RESPONSIBLE TO REPLACE ALL DAMAGED PLANTER AREAS AND IRRIGATION RESULTING FROM THE CONSTRUCTION OF THIS PROJECT.
- ALL CURB PAINT AND CURB LETTERING WITHIN AREA OF WORK TO BE REAPPLIED TO MATCH EXISTING. THIS INCLUDES THE FIRE LANE STRIPING AND SIGNAGE.
- ALL CONCRETE MOWSTRIPS, RAMP AND SIDEWALKS SHALL HAVE WEAKENED PLANE JOINTS AT 10 FEET MAXIMUM ON CENTER AND ONE HALF INCH EXPANSION JOINTS AT 30 FEET MAXIMUM ON CENTER PER DETAIL (A X1.1)
- NO CONCRETE MAY BE POURED UNTIL THE FORMS HAVE BEEN REVIEWED AND APPROVED BY THE PROJECT INSPECTOR.
- ALL BURIED METALLIC OBJECTS SHALL HAVE A PROTECTIVE COATING OR BE WRAPPED WITH APPROVED PROTECTIVE WRAP.
- ADJUST EXISTING SPRINKLER HEADS AND LATERAL LINES AS REQUIRED FOR NEW IMPROVEMENTS. SEE PLANTING AND IRRIGATION SHEETS.
- ADJUST ALL UTILITY LIDS TO GRADE PER (X1.1) UTILITY LIDS IN TRAFFIC AREA SHALL BE TRAFFIC RATED AND LIDS WITHIN ADA PATH OF TRAVEL SHALL BE ADA COMPLIANT LIDS/GRATES. ALL BROKEN LIDS AND UTILITY BOXES SHALL BE REMOVED AND REPLACED.
- WHERE CONCRETE FINISHED GRADE IS HIGHER THAN EXISTING FINISHED GRADE AND ABUTS AGAINST THE EXISTING BUILDING WALL, THE CONTRACTOR SHALL CONSTRUCT CONCRETE IMPROVEMENT PER DETAIL BELOW.
- PAINT 4" WIDE WHITE LINES AT 3' ON CENTER.
- WITHIN ACCESSIBLE CONCRETE PARKING AREA, PAINT ACCESS AISLE WITH 4" WIDE BLUE BORDER, PAINT INSIDE ACCESS AREA WITH 4" WIDE BLUE LINES AT 36" O.C., WITH 12" HIGH BLUE "NO PARKING" WORDING.
- THERE ARE 71 EXISTING PARKING STALLS ON THE SITE. THIS PLAN PROVIDES 71 STALLS

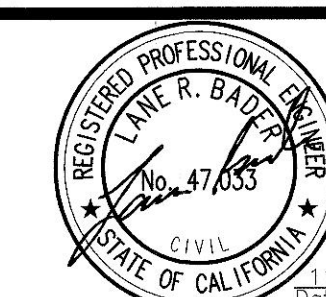


CONCRETE AGAINST BUILDING

NOT TO SCALE

SHEET	OF	SHEETS
APPROVAL		DATE
CITY ENGINEER	<i>[Signature]</i>	12-4-24
DRAWING NO.		

Blair,
Church
& Flynn
CONSULTING ENGINEERS



CONSULTANT
Blair, Church & Flynn
Consulting Engineers
454 Clovis Avenue
Suite 200
Clovis, California 93612
Tel (559) 326-1400
Fax (559) 326-1500

REF. & REV.

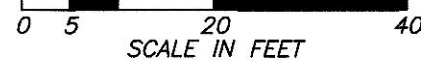
MADERA UNIFIED SCHOOL DISTRICT

PARKING LOT RECONSTRUCTION
MADERA UNIFIED SCHOOL DISTRICT OFFICE
SITE AND DIMENSION PLAN

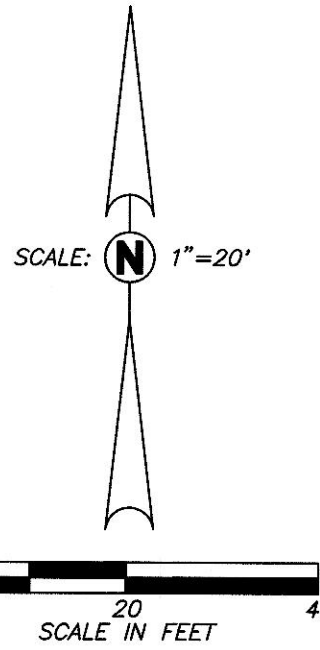
DR. BY: JRS
CH. BY: JRS
DATE: 06-16-2016
SCALE: AS NOTED

C3.0

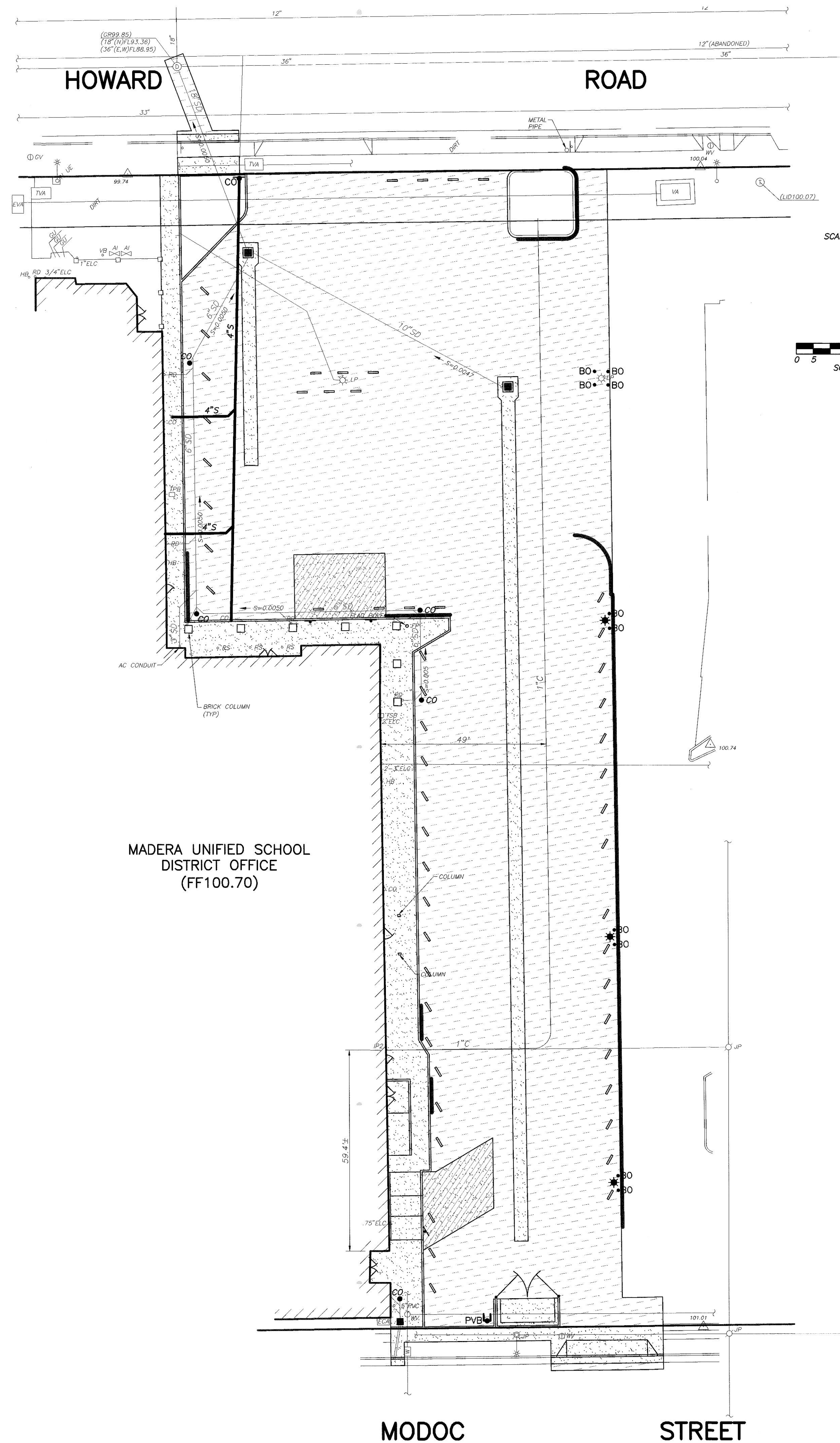




C4.0



C5.0

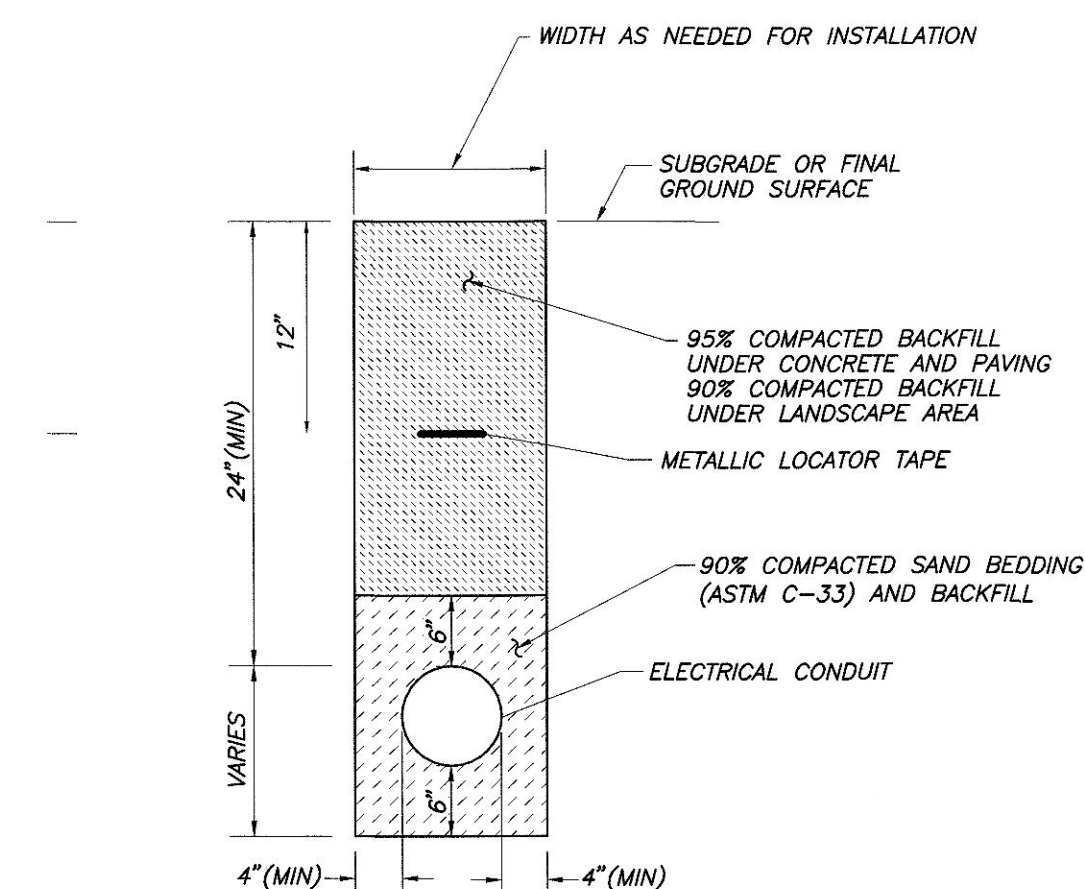


LEGEND:

- 1" C 1" CONDUIT AND 1" SPARE CONDUIT. CONDUITS SHALL BE GALVANIZED RIGID STEEL, SCH. 40. TRENCH AND BACKFILL PER DETAIL A C5.0
- 6" SD PROPOSED STORM DRAIN LINE. SEE GRADING AND DRAINAGE PLAN.

NOTES:

1. THE CONTRACTOR SHALL FIELD VERIFY THE EXACT LOCATION, SIZE, DEPTH, AND TYPE OF ALL EXISTING UTILITIES AND INTERFERENCES SITUATED ALONG THE ROUTE OF THE PROPOSED CONSTRUCTION PRIOR TO COMMENCEMENT OF EXCAVATION, FABRICATION, AND INSTALLATION. THE CONTRACTOR SHALL CONSTRUCT ALL IMPROVEMENTS IN SUCH A MANNER AS WILL PROTECT ALL EXISTING UNDERGROUND UTILITIES AND, IN THE EVENT OF ANY CONFLICTS, SHALL NOTIFY THE ENGINEER BEFORE PROCEEDING.
2. SEE IRRIGATION PLANS FOR PROPOSED IRRIGATION PIPE ALIGNMENT.
3. COORDINATE EXACT PLUMBING LOCATIONS OF BUILDINGS AND NOTIFY THE ENGINEER OF ANY CONFLICT SO THAT ADJUSTMENTS CAN BE MADE IF NEEDED.
4. SAWCUT EXISTING CONCRETE IMPROVEMENTS AS NECESSARY TO INSTALL NEW ELECTRICAL CONDUIT IMPROVEMENTS. CONSTRUCT NEW CONCRETE IMPROVEMENTS TO MATCH ADJACENT CONCRETE IMPROVEMENTS.
5. INSTALLATION, TYPE, AND MANUFACTURER'S MODELS OF SITE UTILITY SYSTEMS SHALL BE DONE IN STRICT ACCORDANCE WITH GOVERNING AUTHORITY REQUIREMENTS.
6. LAYOUT OF MATERIALS, EQUIPMENT AND SYSTEMS IS GENERALLY DIAGRAMMATIC UNLESS SPECIFICALLY DIMENSIONED. SOME WORK MAY BE SHOWN OFFSET FOR CLARITY. THE ACTUAL LOCATIONS OF ALL MATERIALS, PIPING, FIXTURES, EQUIPMENT, SUPPORTS, ETC., SHALL BE CAREFULLY PLANNED PRIOR TO INSTALLATION OF ANY WORK TO AVOID ALL INTERFERENCES WITH EACH OTHER OR WITH STRUCTURAL, ELECTRICAL, PLUMBING AND MECHANICAL, ARCHITECTURAL OR OTHER ELEMENTS. ALL CONFLICTS SHALL BE CALLED TO THE ATTENTION OF THE ARCHITECT AND THE ENGINEER PRIOR TO THE INSTALLATION OF ANY WORK OR THE ORDERING OF ANY EQUIPMENT.
7. ANY INSPECTION TO BE MADE BY THE CITY OF MADERA SHALL REQUIRE A MINIMUM OF 24 HOUR NOTICE.
8. BACKFILL ELECTRICAL CONDUIT TRENCHES PER DETAIL A C5.0



A TRENCH DETAIL FOR ELECTRICAL CONDUIT
C5.0 NOT TO SCALE

SHEET	OF	SHEETS
APPROVAL	DATE	
CITY ENGINEER	12-4-24	
DRAWING NO.		

Blair,
Church
& Flynn

CONSULTING ENGINEERS

REGISTERED PROFESSIONAL ENGINEER
STATE OF CALIFORNIA
No. 47633
CIVIL

11-1-24
Date Signed

CONSULTANT

Blair, Church & Flynn
Consulting Engineers
453 Clovis Avenue
Suite 200
Clovis, California 93612
Tel (559) 326-1400
Fax (559) 326-1500

REF. & REV.

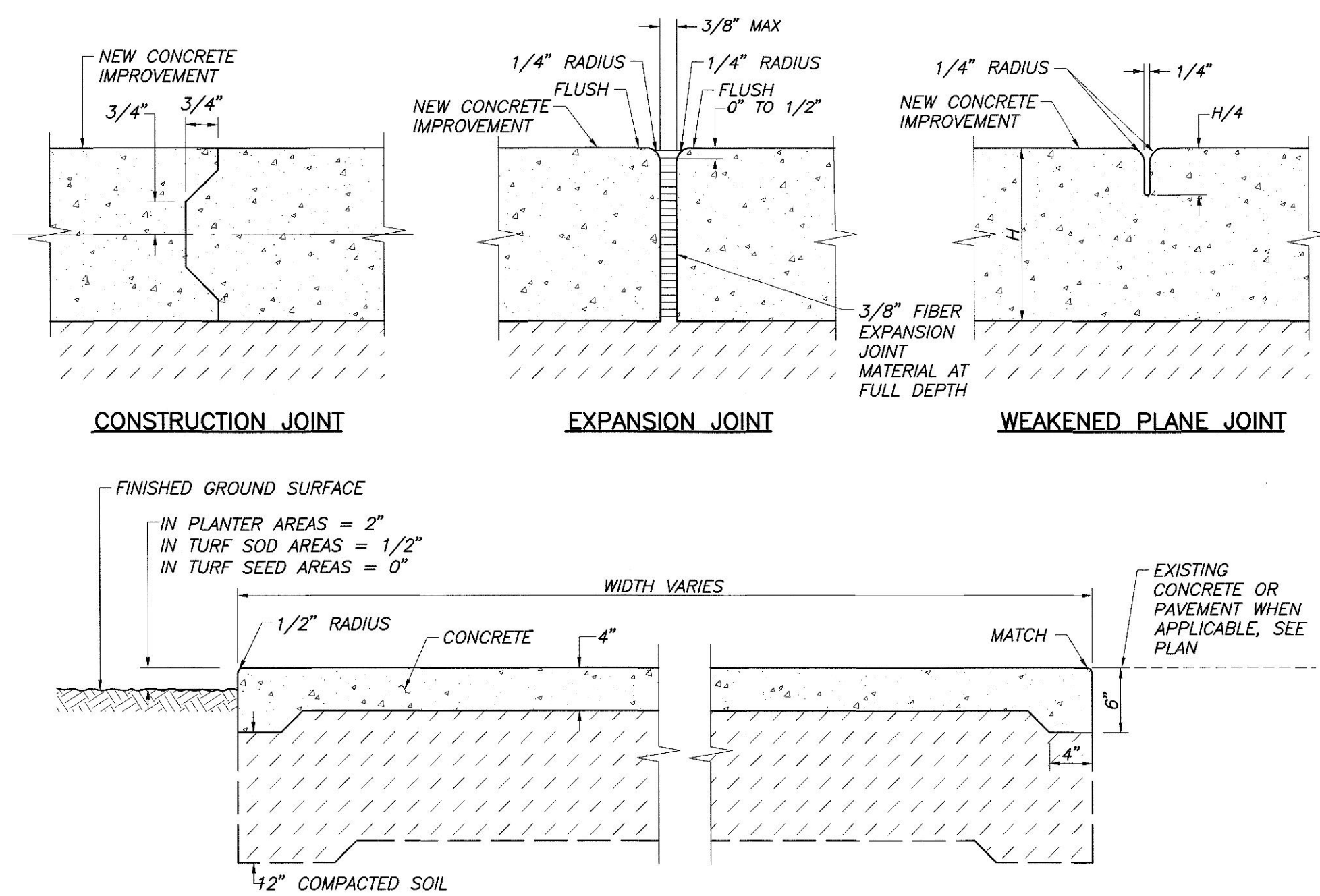
MADERA UNIFIED SCHOOL DISTRICT

PARKING LOT RECONSTRUCTION
MADERA UNIFIED SCHOOL DISTRICT OFFICE

ELECTRICAL CONDUIT PLAN

DR. BY: JRS
CH. BY: JRS
DATE: 06-16-2016
SCALE AS NOTED

C6.0



A REGULAR-DUTY CONCRETE
X1.1 NOT TO SCALE

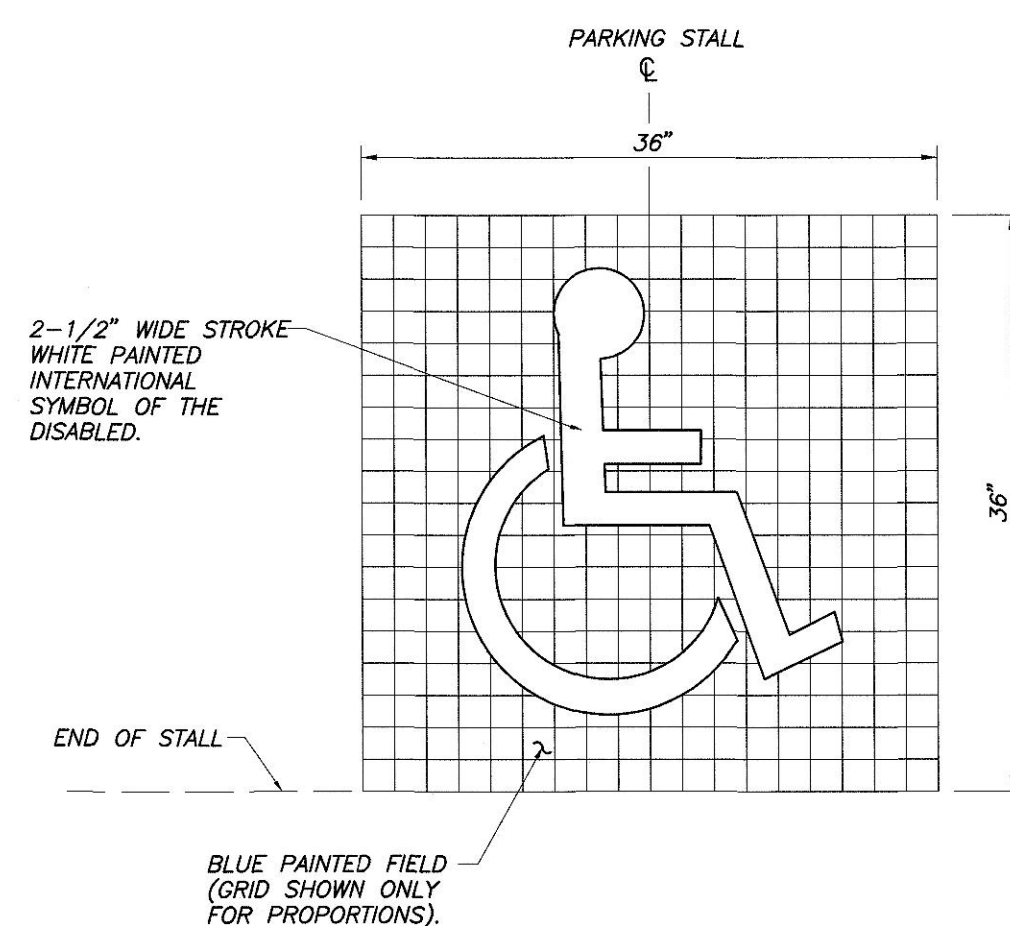
B CONCRETE CURB
X1.1 NOT TO SCALE

C PAVEMENT SECTION
X1.1 NOT TO SCALE

D ACCESSIBLE SIGN
X1.1 NOT TO SCALE

NOTES:

1. THE DETECTABLE WARNING SHALL VISUALLY CONTRAST 70% WITH ADJOINING SURFACES, EITHER LIGHT-ON-DARK OR DARK-ON-LIGHT. THE MATERIAL USED SHALL BE A INTEGRAL PART OF THE WALKING SURFACE.
2. THE DOMES SHALL BE MANUFACTURED BY SAFESTEP TO OR APPROVED EQUAL.
3. ONLY APPROVED DSA/AC DETECTABLE WARNING PRODUCTS AND DIRECTIONAL SURFACES SHALL BE INSTALLED AS PROVIDED IN THE CALIFORNIA CODE OF REGULATIONS (CCR), TITLE 24, PART 1, ARTICLES 2, 3 AND 4.



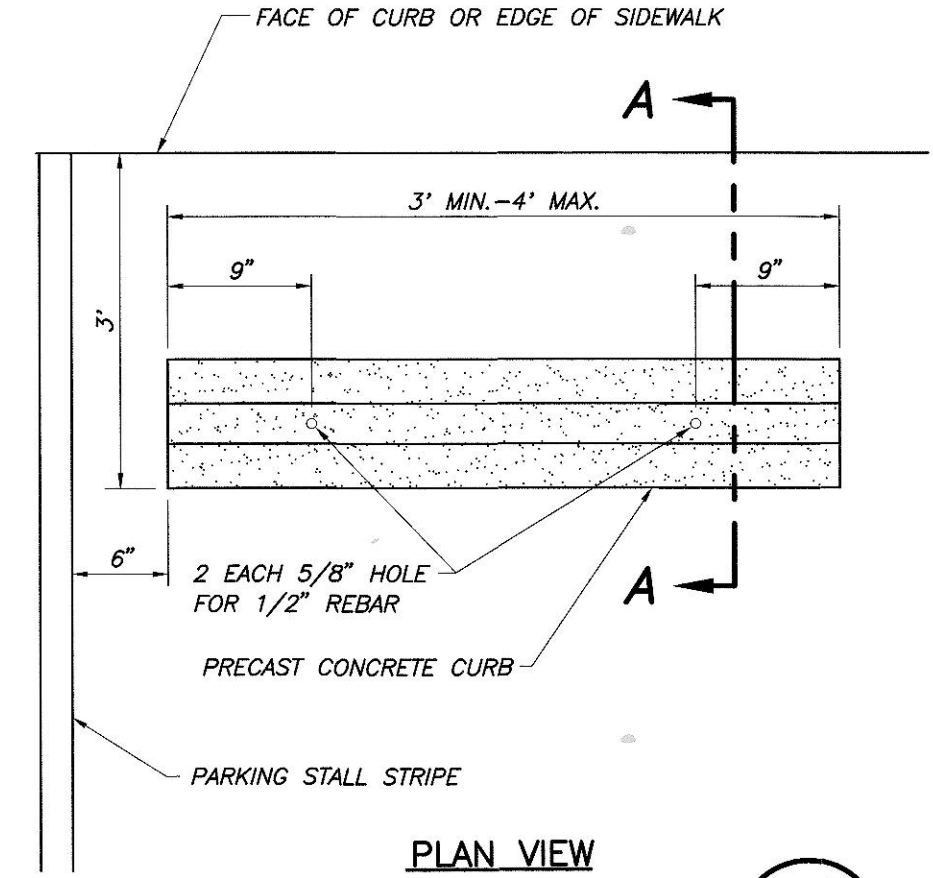
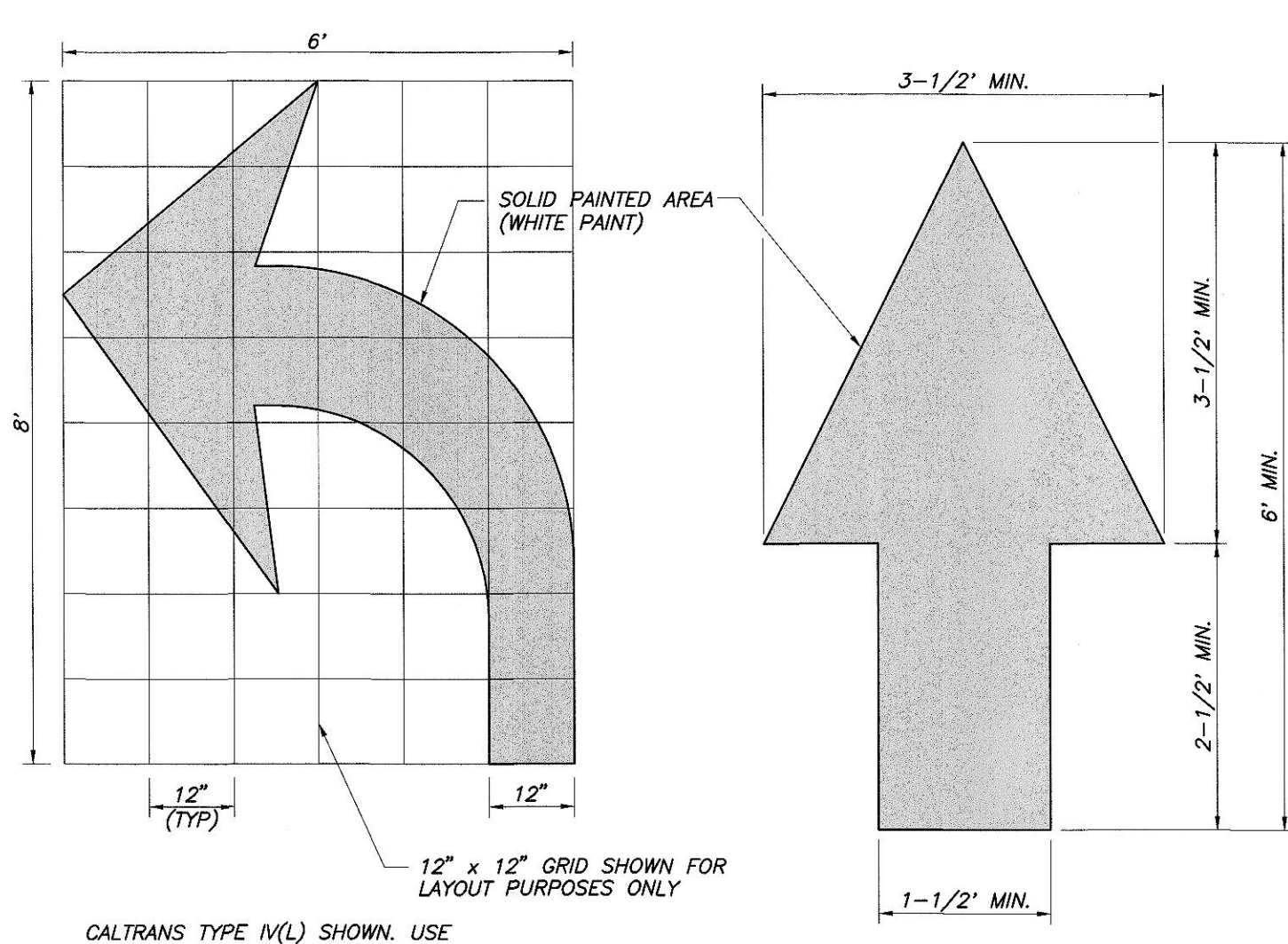
F DETECTABLE WARNINGS
X1.1 NOT TO SCALE

G REINFORCED CONCRETE VALLEY GUTTER
X1.1 NOT TO SCALE

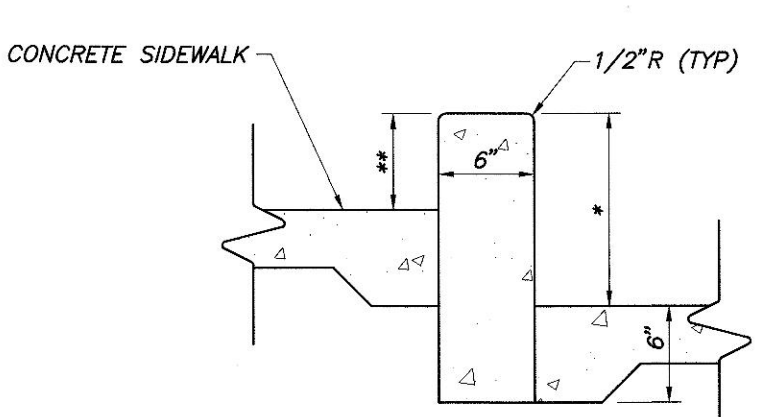
H ENTRY SIGN
X1.1 NOT TO SCALE

I ADJUST UTILITY LID
X1.1 NOT TO SCALE

E ACCESSIBLE SYMBOL
X1.1 NOT TO SCALE



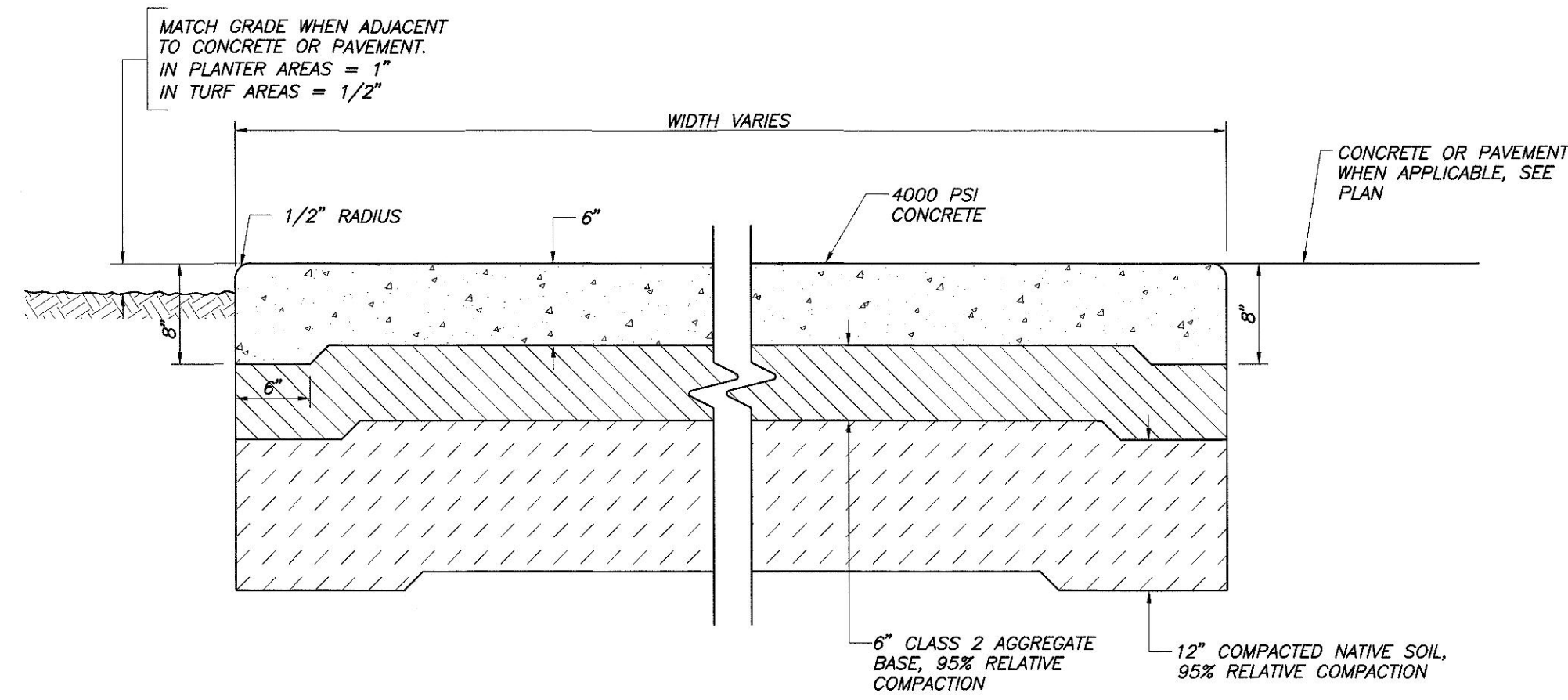
K WHEELSTOP
X1.1 NOT TO SCALE



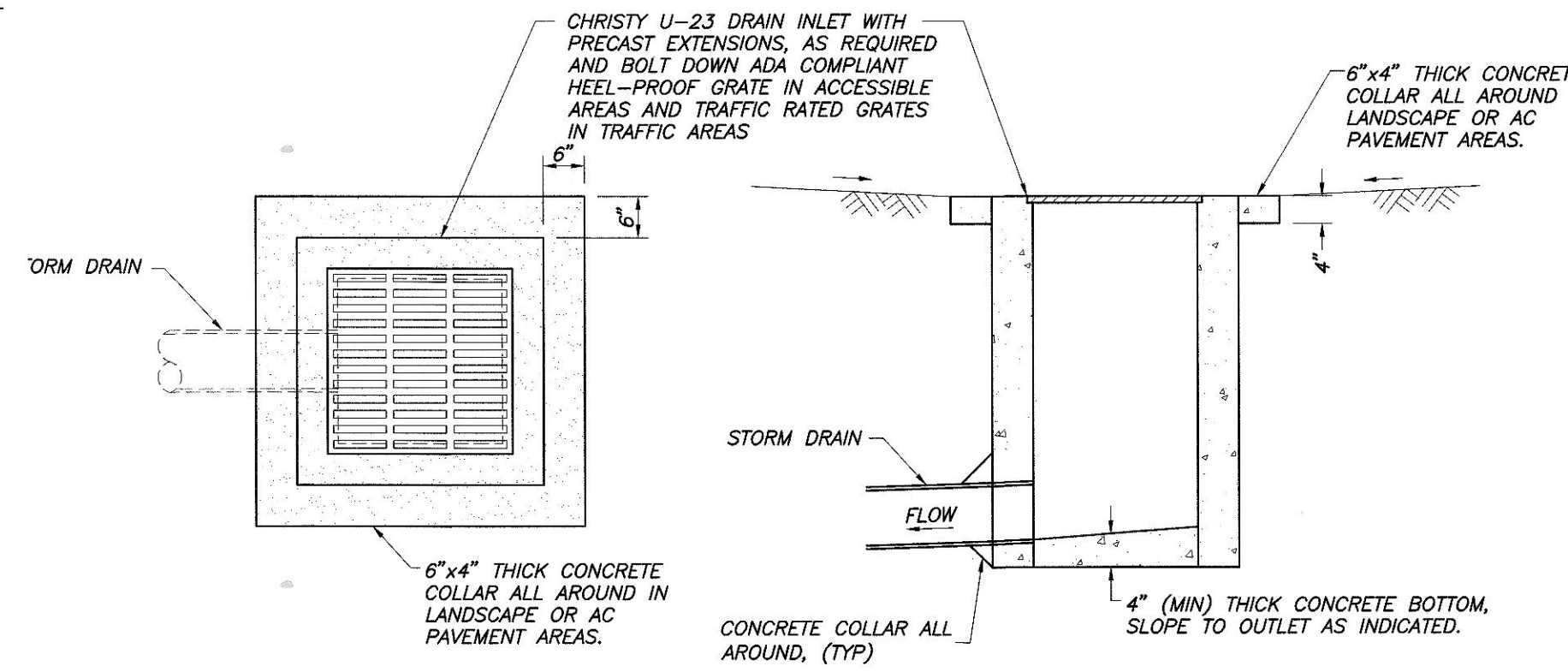
L 6" VERTICAL CURB
X1.1 NOT TO SCALE

M SURFACE CLEANOUT
X1.1 NOT TO SCALE

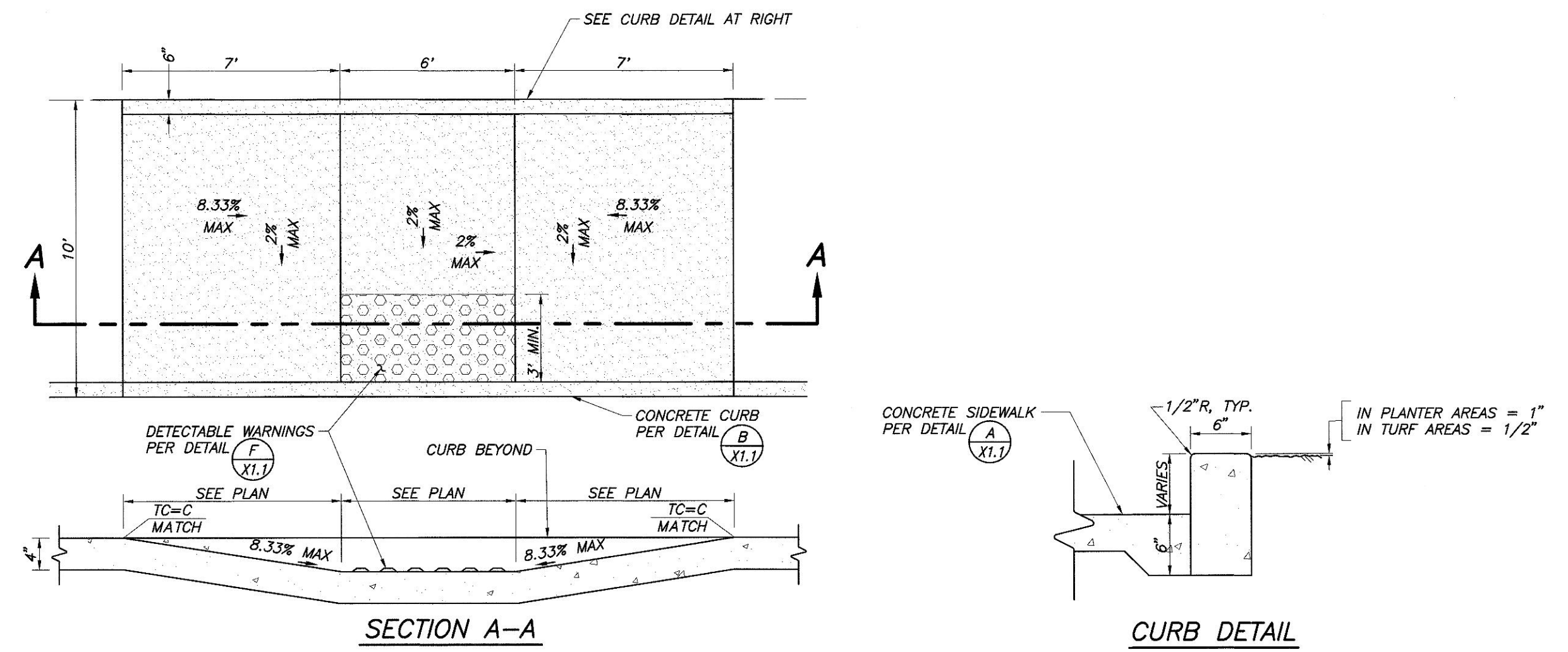
SHEET	OF	SHEETS
APPROVAL	DATE	
CITY ENGINEER	12-4-24	
DRAWING NO.		



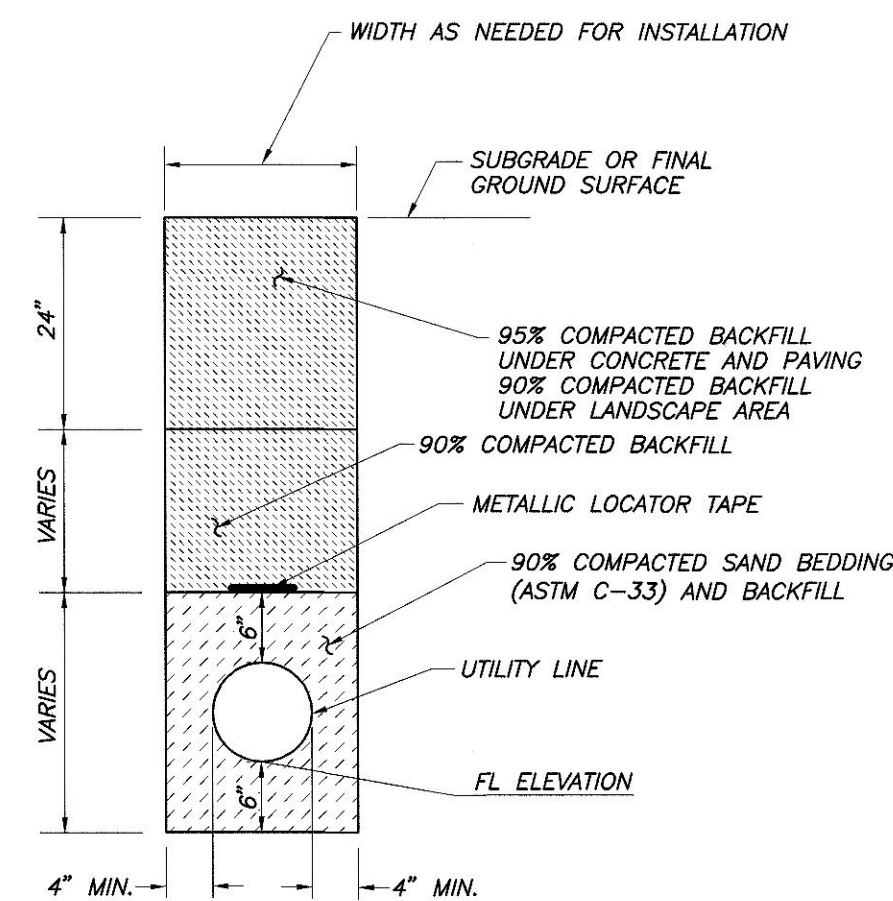
A
HEAVY DUTY CONCRETE SLAB
X1.2
NOT TO SCALE



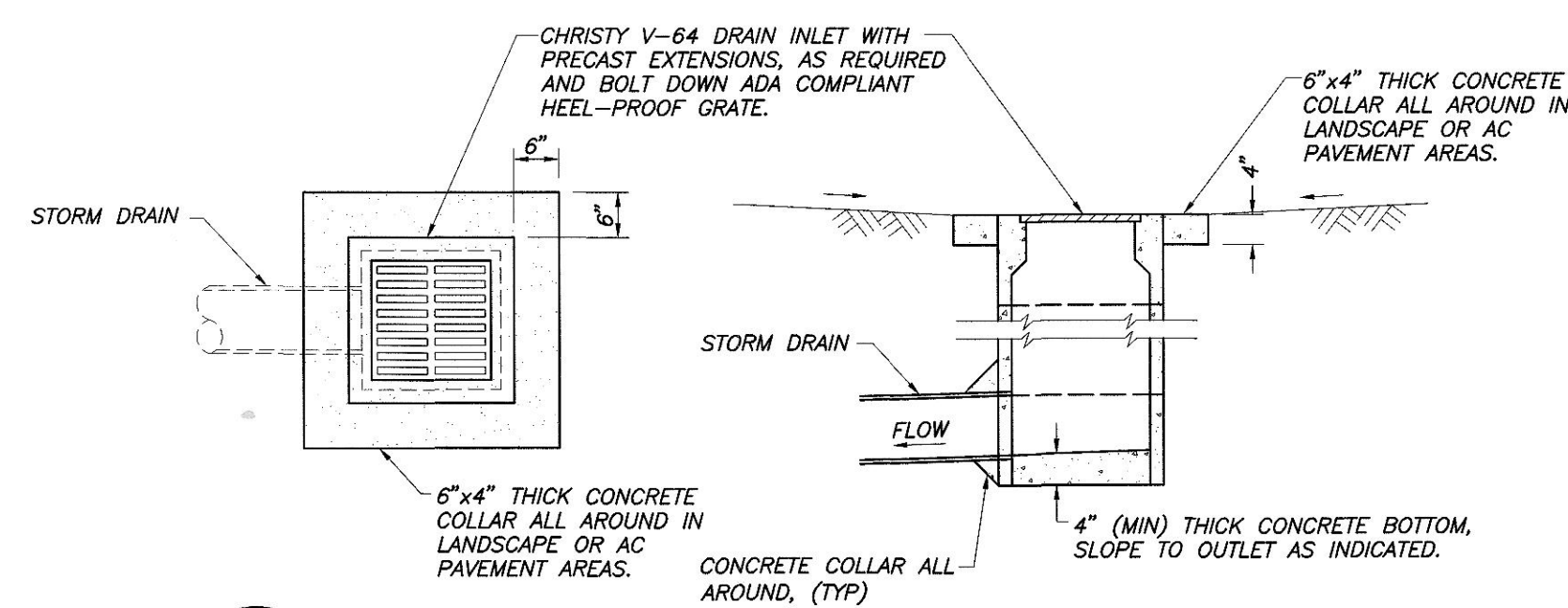
B
U-23 DRAIN INLET WITH CONCRETE COLLAR
X1.2
NOT TO SCALE



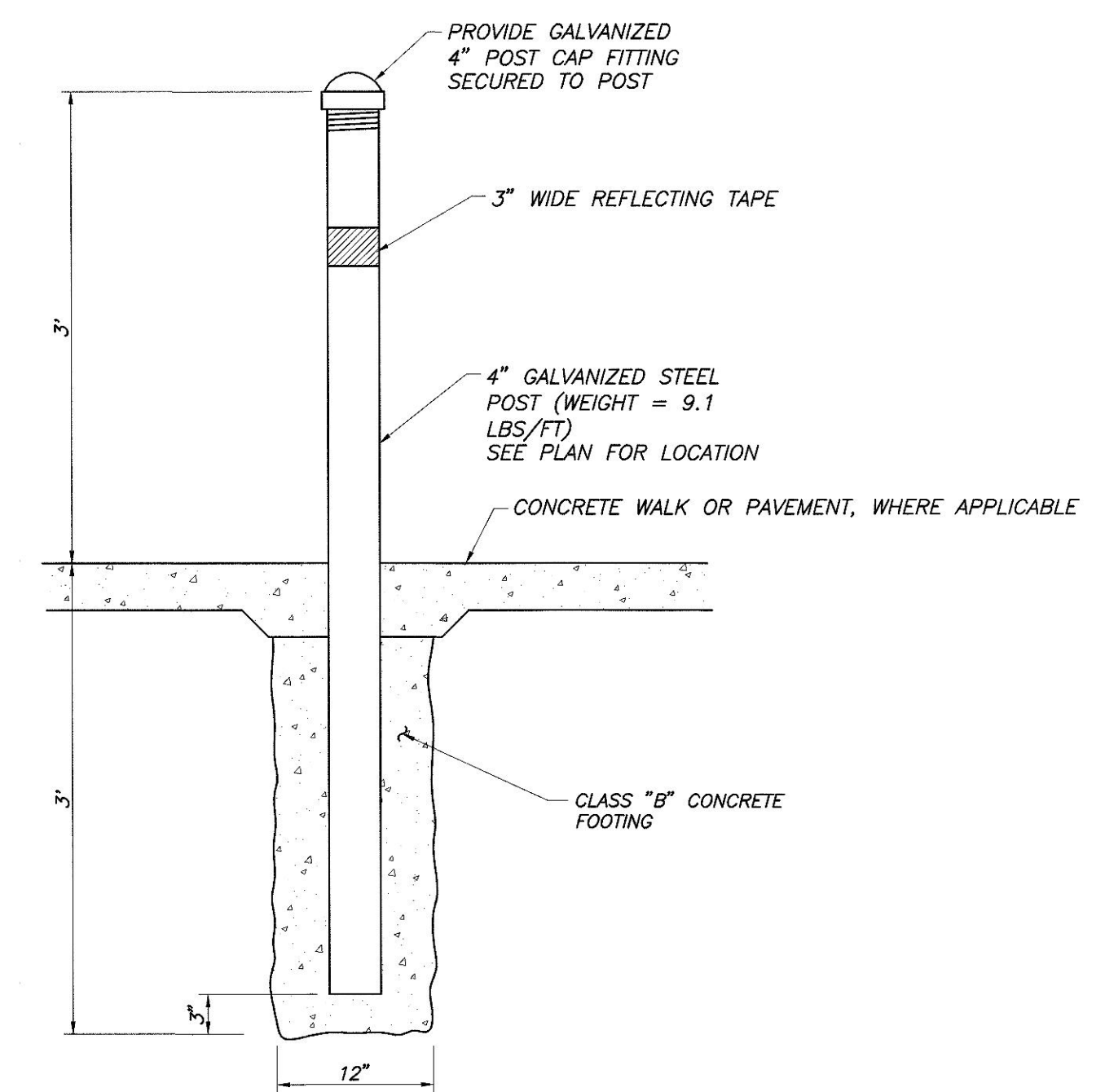
C
IN-LINE RAMP
X1.2
NOT TO SCALE



D
TRENCH DETAIL FOR UTILITIES
X1.2
NOT TO SCALE



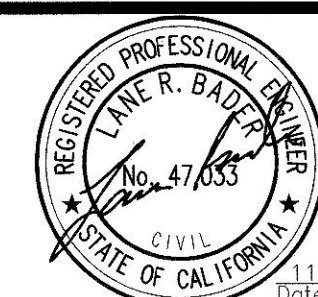
E
V-64 DRAIN INLET WITH CONCRETE COLLAR
X1.2
NOT TO SCALE



F
FIXED PROTECTION POST
X1.2
NOT TO SCALE

SHEET	OF	SHEETS
APPROVAL		DATE
CITY ENGINEER	12-4-24	
DRAWING NO.		

Blair, Church & Flynn
CONSULTING ENGINEERS



CONSULTANT
Blair, Church & Flynn
Consulting Engineers
451 Clovis Avenue
Suite 200
Clovis, California 93612
Tel (559) 326-1400
Fax (559) 326-1500

REF. & REV.

MADERA UNIFIED SCHOOL DISTRICT
PARKING LOT RECONSTRUCTION
MADERA UNIFIED SCHOOL DISTRICT OFFICE
DETAILS
DR. BY: JRS
CH. BY: JRS
DATE: 08-18-2016
SCALE: AS NOTED
X1.2