



MATCH LINE – SEE SHEET C202

CONSTRUCTION LEGEND:

- LIMITS OF CONCRETE IMPROVEMENTS
- LIMITS OF ORNAMENTAL IRON FENCE IMPROVEMENTS
- LIMITS OF CHAIN LINK FENCE IMPROVEMENTS

CONSTRUCTION NOTES:

- ALL EXISTING ASPHALT CONCRETE PAVING AND CONCRETE IMPROVEMENTS NOT DESIGNATED FOR REMOVAL MUST BE PROTECTED AT ALL TIMES.
- ALL CONCRETE MOWSTRIPS, RAMP AND SIDEWALKS SHALL HAVE WEAKENED PLANE JOINTS AT 10 FEET MAXIMUM ON CENTER AND ONE HALF INCH EXPANSION JOINTS AT 30 FEET MAXIMUM ON CENTER PER DETAIL.
- NO CONCRETE MAY BE POURED UNTIL THE FORMS HAVE BEEN REVIEWED AND APPROVED BY THE PROJECT INSPECTOR.
- ALL BURIED METALLIC OBJECTS SHALL HAVE A PROTECTIVE COATING OR BE WRAPPED WITH PROTECTIVE WRAP.
- ADJUST EXISTING SPRINKLER HEADS AND LATERAL LINES AS REQUIRED FOR NEW IMPROVEMENTS.
- CONTRACTOR SHALL PROVIDE TRANSITION GRADING FROM 1/2" BELOW NEW FENCE MOWSTRIP TO ORIGINAL GROUND FOR A SMOOTH TRANSITION.
- CONTRACTOR SHALL REMOVE AND REPLACE IRRIGATION SYSTEM AS REQUIRED FOR THE NEW IMPROVEMENTS.
- PROVIDE MINIMUM OF 2" ADDITIONAL VEGETATION REMOVAL AND GRADING ON EACH SIDE OF MOWSTRIP AS NECESSARY FOR SMOOTH GRADING TRANSITION BETWEEN NEW MOWSTRIP/CONCRETE IMPROVEMENTS AND EXISTING GROUND. IN TURF AREAS REMOVE SOD AND REPLACE AS NECESSARY ON EACH SIDE OF MOWSTRIP. FINISH GRADE SHALL BE 1/2" BELOW CONCRETE.
- CONTRACTOR TO CORE INTO EXISTING CONCRETE WHEN FENCE IS LOCATED WITHIN EXISTING CONCRETE.
- AT EXISTING WALL/BUILDING/STRUCTURAL IMPROVEMENTS, CONTRACTOR SHALL SET FENCE POST A MAXIMUM OF 2" AWAY FROM EXISTING IMPROVEMENTS.
- NO FENCE POST MAY BE INSTALLED UNTIL THE LOCATION HAS BEEN REVIEWED AND APPROVED BY THE ENGINEER.
- AERIAL PHOTO DOES NOT SHOW ALL CURRENT EXISTING CONDITIONS AT PROJECT SITE. CONTRACTOR TO FIELD VERIFY EXISTING CONDITIONS PRIOR TO ANY WORK BEING COMPLETED.
- REMOVE EXISTING IMPROVEMENTS AS NECESSARY TO CONSTRUCT NEW IMPROVEMENTS SHOWN ON THESE PLANS.
 - FOR CONCRETE REMOVAL, REMOVE TO THE NEXT NEAREST TOOLED JOINT OR EXPANSION JOINT OF NEW IMPROVEMENTS DESIGNATED TO REMAIN. IF JOINT DOES NOT EXIST SAWCUT AS NEEDED.
- REPLACE ALL DAMAGED TURF AND IRRIGATION FACILITIES RESULTING FROM THE WORK REQUIRED.
- PAINT ORNAMENTAL FENCE PER COLOR SELECTED BY THE DISTRICT.

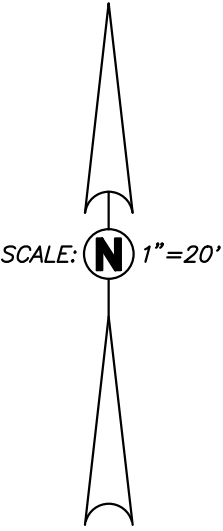
SITE BENCHMARK:

CHISELED CROSS ON TOP OF CURB, APPROXIMATELY 285 FEET SOUTH OF MARTIN STREET, ON THE WEST SIDE OF THE MAIN ENTRANCE TO NISHIMOTO ELEMENTARY SCHOOL AND JACK G. DESMOND MIDDLE SCHOOL.

ELEVATION = 98.29' ASSUMED DATUM

TOPOGRAPHIC SURVEY LEGEND:

- AC ASPHALTIC CONCRETE
- BW BACK OF WALK
- C CONCRETE
- GR GRATE; DIAMETER AS NOTED
- LID LID OF UTILITY STRUCTURE
- RA RAMP
- T TURF
- TC TOP OF CURB
- TW TOP OF WALL
- (335.21) EXISTING GRADE
- AI AUTOMATIC IRRIGATION VALVE
- BO BOLLARD
- CO SEWER CLEANOUT
- SC SURVEY CONTROL POINT
- EPB ELECTRICAL PULLBOX
- HB HOSE BIBB
- LP LIGHT POLE
- MH
- WV WATER VALVE
- CONCRETE BLOCK WALL
- BUILDING
- LIMITS OF TURF/DIRT
- EDGE OF CONCRETE



ADDENDUM #1 01-30-2015 ALL CHANGES ARE IDENTIFIED BY A REVISION CLOUD

Blair,
Church & Flynn
CONSULTING ENGINEERS

REGISTERED PROFESSIONAL ENGINEER
FRANK SEMERARI
CIVIL
STATE OF CALIFORNIA
1/5/2015
Date Signed:

CONSULTANT
Blair, Church & Flynn
Consulting Engineers
451 Clovis Avenue,
Suite 200
Clovis, California 93612
Tel (559) 326-1400
Fax (559) 326-1500

REF. & REV.

MADERA UNIFIED SCHOOL DISTRICT

NISHIMOTO ELEMENTARY SCHOOL
FENCING IMPROVEMENTS
SITE PLAN

DR. BY: JSD
CH. BY: JS
DATE: 1/5/2015
SCALE: AS NOTED

C201

 LIMITS OF CONCRETE IMPROVEMENTS

 LIMITS OF ORNAMENTAL IRON FENCE IMPROVEMENTS

 LIMITS OF CHAIN LINK FENCE IMPROVEMENTS

1. ALL EXISTING ASPHALT CONCRETE PAVING AND CONCRETE IMPROVEMENTS NOT DESIGNATED FOR REMOVAL SHALL BE PROTECTED AT ALL TIMES.
2. ALL CONCRETE MOWSTRIPS, RAMP AND SIDEWALKS SHALL HAVE WEAKENED PLANE JOINTS AT 10 FEET MAXIMUM ON CENTER AND ONE HALF INCH EXPANSION JOINTS AT 30 FEET MAXIMUM ON CENTER PER DETAIL.

A
X101

3. NO CONCRETE MAY BE POURED UNTIL THE FORMS HAVE BEEN REVIEWED AND APPROVED BY THE PROJECT INSPECTOR.
4. ALL BURIED METALLIC OBJECTS SHALL HAVE A PROTECTIVE COATING OR BE WRAPPED WITH PROTECTIVE WRAP.
5. ADJUST EXISTING SPRINKLER HEADS AND LATERAL LINES AS REQUIRED FOR NEW IMPROVEMENTS.
6. CONTRACTOR SHALL PROVIDE TRANSITION GRADING FROM 1/2" BELOW NEW FENCE MOWSTRIP TO ORIGINAL GROUND FOR A SMOOTH TRANSITION.
7. CONTRACTOR SHALL REMOVE AND REPLACE IRRIGATION SYSTEM AS REQUIRED FOR THE NEW IMPROVEMENTS.
8. PROVIDE MINIMUM OF 2' ADDITIONAL VEGETATION REMOVAL AND GRADING ON EACH SIDE OF MOWSTRIP AS NECESSARY FOR SMOOTH GRADING TRANSITION BETWEEN NEW MOWSTRIP/CONCRETE IMPROVEMENTS AND EXISTING GROUND. IN TURF AREAS REMOVE SOD AND REPLACE AS NECESSARY ON EACH SIDE OF MOWSTRIP. FINISH GRADE SHALL BE 1/2" BELOW CONCRETE.
9. CONTRACTOR TO CORE INTO EXISTING CONCRETE WHEN FENCE IS LOCATED WITHIN EXISTING CONCRETE.
10. AT EXISTING WALL/BUILDING/STRUCTURAL IMPROVEMENTS, CONTRACTOR SHALL SET FENCE POST A MAXIMUM OF 2" AWAY FROM EXISTING IMPROVEMENTS.
11. NO FENCE POST MAY BE INSTALLED UNTIL THE LOCATION HAS BEEN REVIEWED AND APPROVED BY THE ENGINEER.
12. AERIAL PHOTO DOES NOT SHOW ALL CURRENT EXISTING CONDITIONS AT PROJECT SITE. CONTRACTOR TO FIELD VERIFY EXISTING CONDITIONS PRIOR TO ANY WORK BEING COMPLETED.
13. REMOVE EXISTING IMPROVEMENTS AS NECESSARY TO CONSTRUCT NEW IMPROVEMENTS SHOWN ON THESE PLANS.
 - a. FOR CONCRETE REMOVAL, REMOVE TO THE NEXT NEAREST TOOLED JOINT OR EXPANSION JOINT OF NEW IMPROVEMENTS DESIGNATED TO REMAIN. IF JOINT DOES NOT EXIST SAWCUT AS NEEDED.
14. REPLACE ALL DAMAGED TURF AND IRRIGATION FACILITIES RESULTING FROM THE WORK REQUIRED.
15. PAINT ORNAMENTAL FENCE PER COLOR SELECTED BY THE DISTRICT

CHISELED CROSS ON TOP OF CURB, APPROXIMATELY 285 FEET SOUTH OF MARTIN STREET, ON THE WEST SIDE OF THE MAIN ENTRANCE TO NISHIMOTO ELEMENTARY SCHOOL AND JACK G. DESMOND MIDDLE SCHOOL.

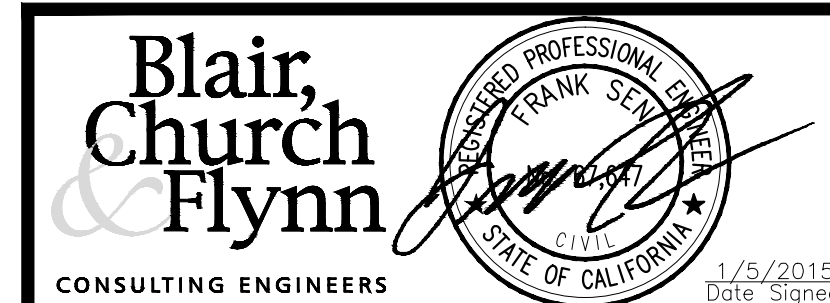
ELEVATION = 98.29' ASSUMED DATUM

AC	ASPHALTIC CONCRETE
BW	BACK OF WALK
C	CONCRETE
GR	GRATE; DIAMETER AS NOTED
LID	LID OF UTILITY STRUCTURE
RA	RAMP
T	TURF
TC	TOP OF CURB
TW	TOP OF WALL
(335.21)	EXISTING GRADE
	AUTOMATIC IRRIGATION
BO	BOLLARD
CO	SEWER CLEANOUT
 112.55	SURVEY CONTROL POINT
	ELECTRICAL PULLBOX
HB	HOSE BIBB
	LIGHT POLE
	MH
	TREE; SPREAD SHOWN GRAPHICALLY AND TRUNK DIAMETER AS SHOWN
	WATER VALVE
	CONCRETE BLOCK WALL
	BUILDING
	LIMITS OF TURF/DIRT
	EDGE OF CONCRETE

SCALE: 1"=20'

 ADDENDUM #1 01-30-2015

 ALL CHANGES ARE IDENTIFIED
BY A REVISION CLOUD



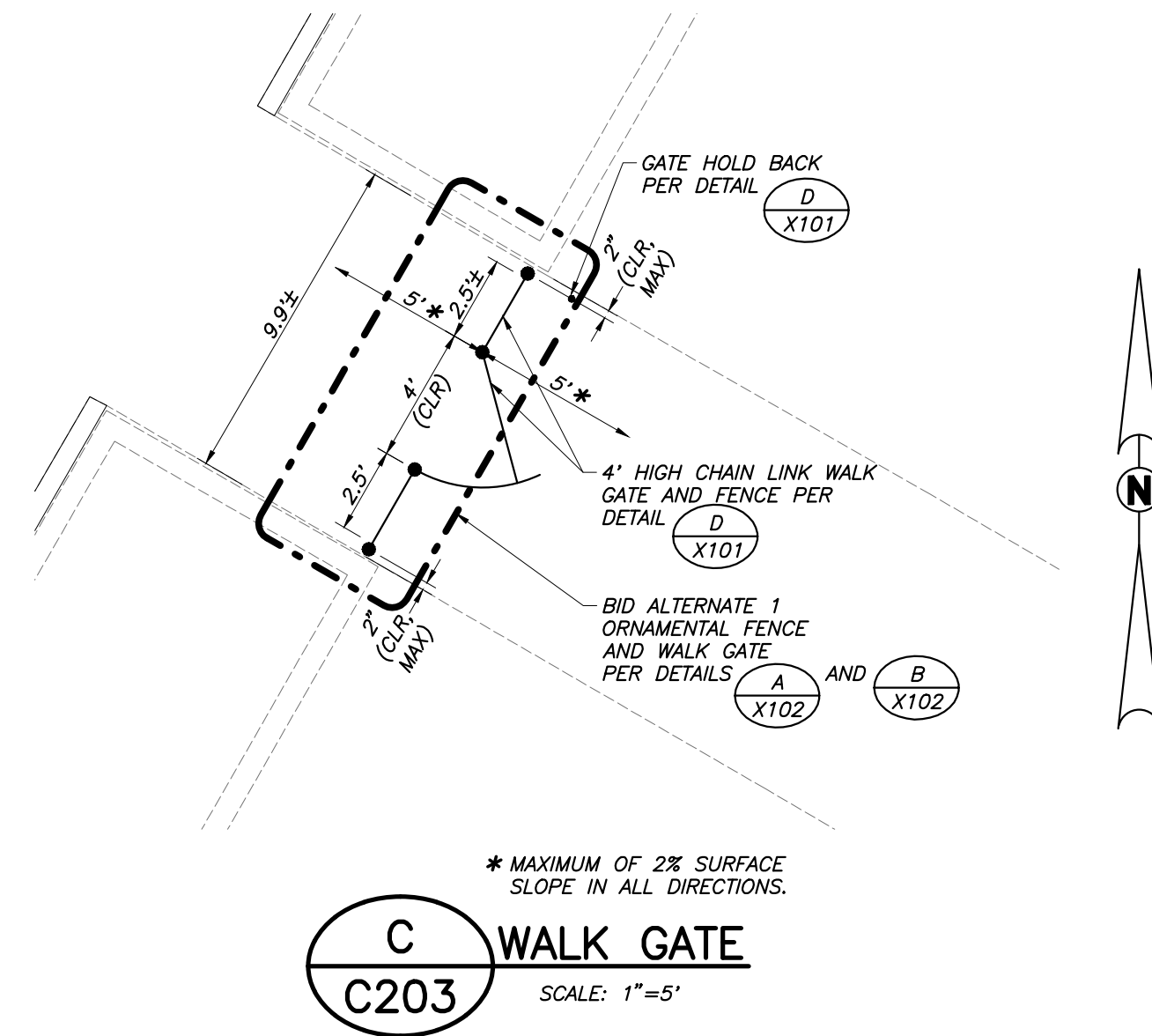
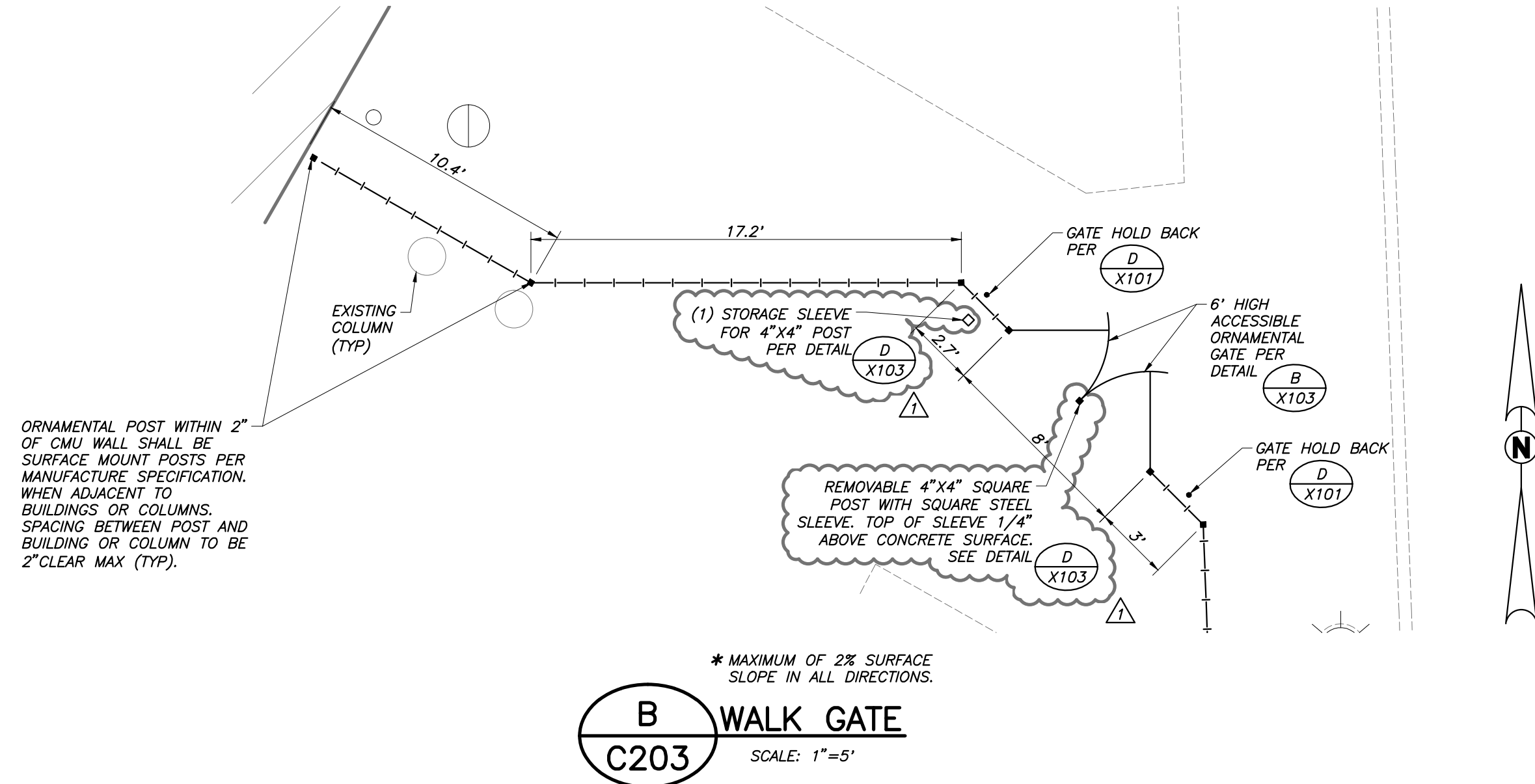
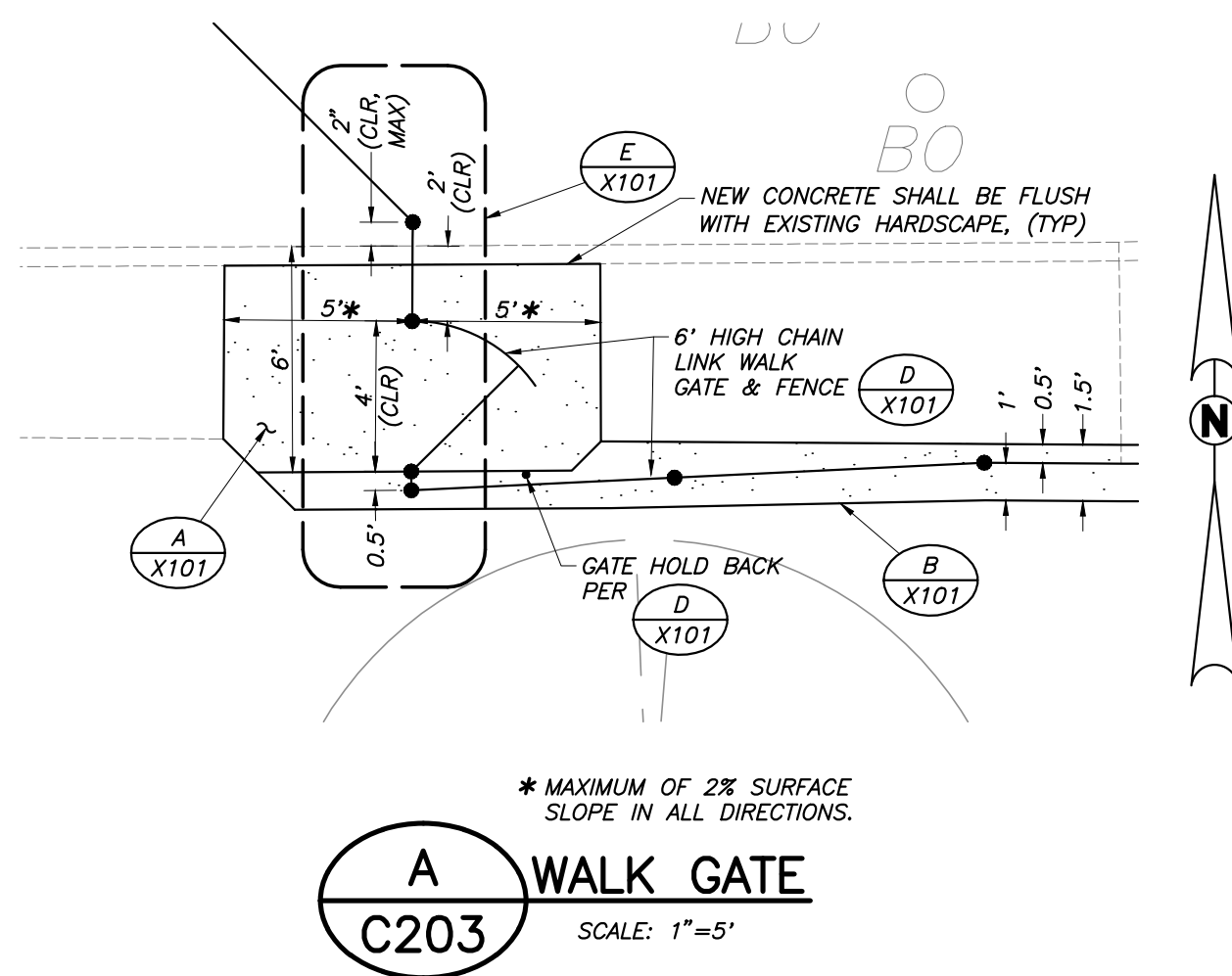
CONSULTANT
Blair, Church & Flynn
Consulting Engineers
451 Clovis Avenue,
Suite 200
Clovis, California 93612
Tel (559) 326-1400
Fax (559) 326-1500

REF. & REV.

NISHIMOTO ELEMENTARY SCHOOL
FENCING IMPROVEMENTS
SITE PLAN

DR. BY: JSD
CH. BY: FS
DATE: 1/5/2015
SCALE AS NOTED

C202



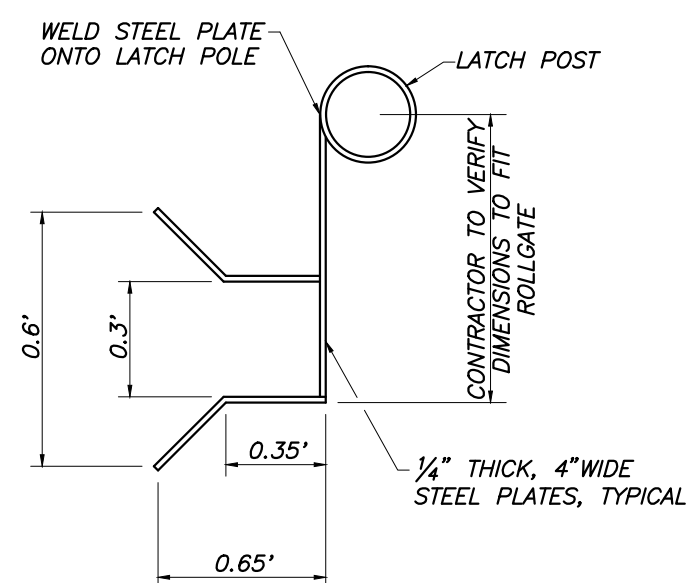
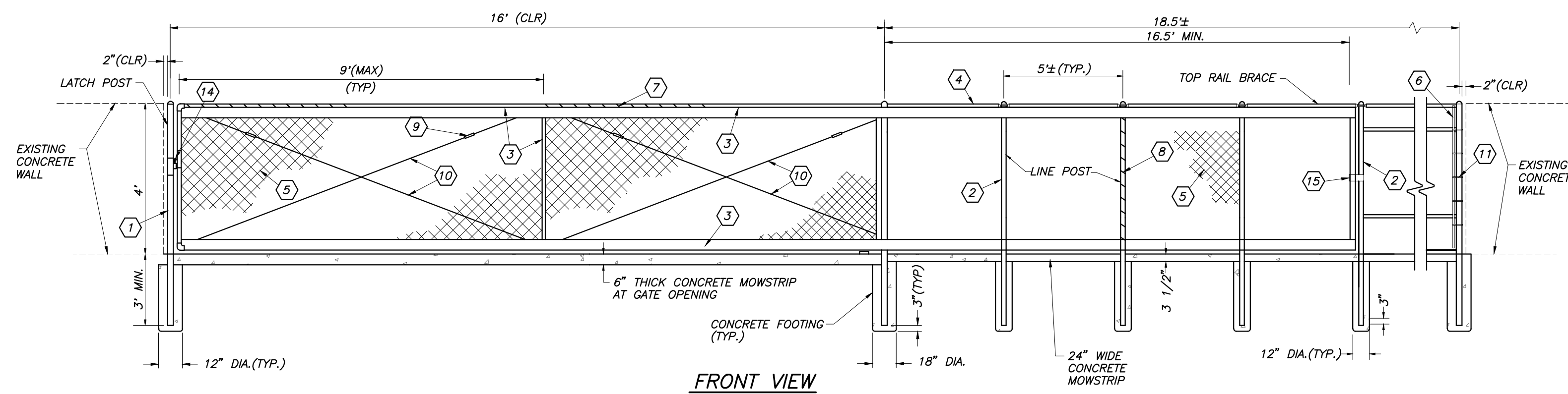
ADDENDUM #1 01-30-2015

ALL CHANGES ARE IDENTIFIED BY A REVISION CLOUD

Blair, Church & Flynn CONSULTING ENGINEERS 451 Clovis Avenue, Suite 200 Clovis, California 93612 Tel (559) 326-1400 Fax (559) 326-1500	CONSULTANT Blair, Church & Flynn Consulting Engineers 451 Clovis Avenue, Suite 200 Clovis, California 93612 Tel (559) 326-1400 Fax (559) 326-1500	REF. & REV.	MADERA UNIFIED SCHOOL DISTRICT

DR. BY: JSD CH. BY: JSD DATE: 1/5/2015 SCALE: AS NOTED	C203
---	-------------

Copyright 2014-2015 Blair, Church & Flynn Consulting Engineers, Inc. All rights reserved. 1/5/2015 1:43:10 PM

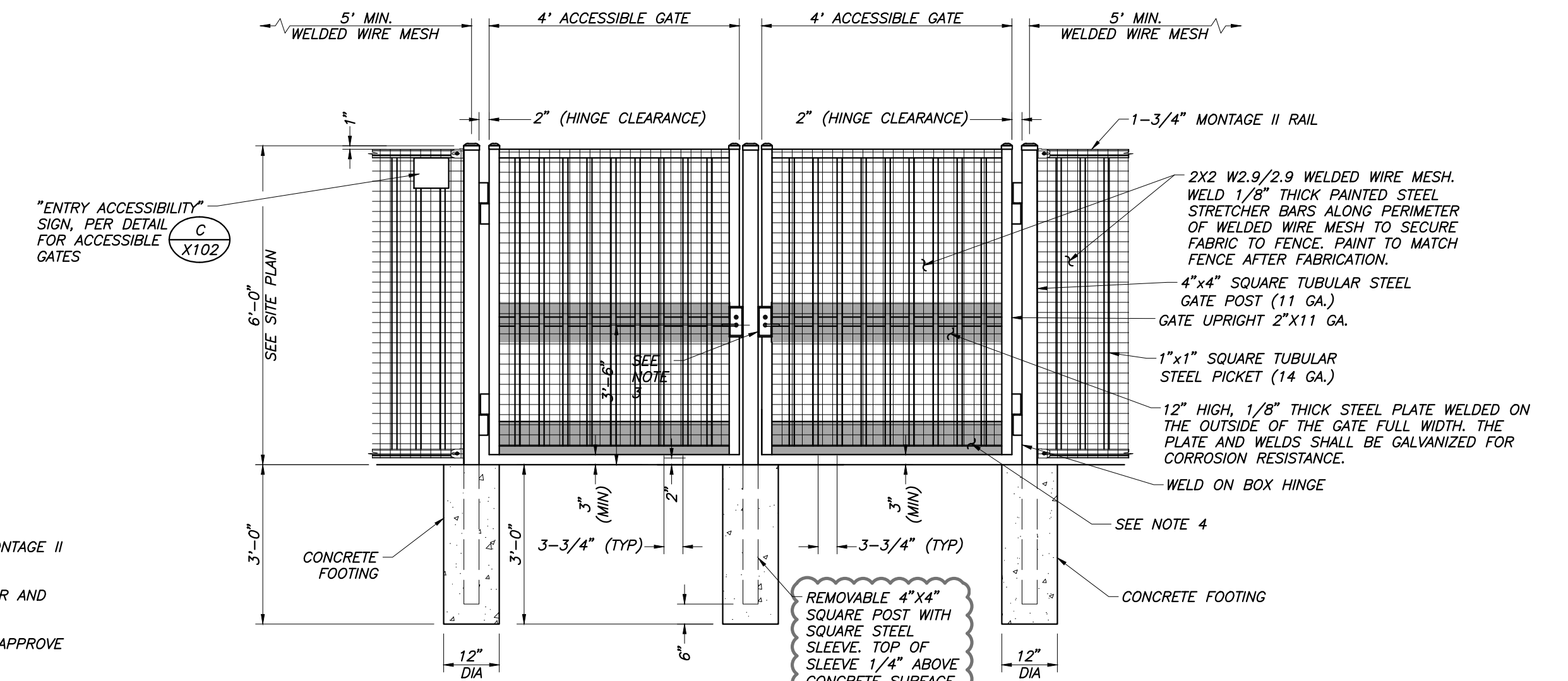


ROLL GATE ITEMS TO BE FURNISHED AND INSTALLED:

- 1 2 1/2" O.D. GALVANIZED STEEL CORNER, GATE, AND END POST (5.79 lb./ft.)
- 2 2 3/8" O.D. GALVANIZED STEEL LINE POST (3.65 lb./ft.)
- 3 2" O.D. GALVANIZED STEEL GATE FRAME (2.72 lb./ft.)
- 4 1 5/8" O.D. GALVANIZED STEEL HORIZONTAL RAIL (2.27 lb./ft.)
- 5 2" X 2" MESH X 9 GAUGE GALVANIZED FENCE FABRIC WITH KNUCKLED TOP AND BOTTOM SELVAGE. GALVANIZE BEFORE WEAVING. GBW. FENCE FABRIC SHALL HAVE VINYL PRIVACY SLATS, DESERT TAN COLOR.
- 6 1/4" X 3/4" GALVANIZED STEEL STRETCHER BAR
- 7 9 GAUGE (0.148" DIA.) GALVANIZED STEEL TIE WIRES OR HOG RINGS AT 15" MAXIMUM SPACING
- 8 9 GAUGE (0.192" DIA.) GALVANIZED STEEL POST CLIPS AT 14" MAXIMUM SPACING
- 9 6" TURNBUCKLE ADJUSTERS FOR 3/8" DIA. TRUSS RODS
- 10 3/8" DIA. GALVANIZED STEEL ADJUSTABLE TRUSS RODS
- 11 1/8" THICK STEEL STRETCHER BAR TENSION BAND AT 12" MAXIMUM SPACING (MINIMUM 6 BANDS PER EACH 6' POST SECTION)
- 12 3/8" X 6" GALVANIZED HOOK BOLT INSTALLED MIDWAY BETWEEN POSTS
- 13 7 GAUGE (0.177" DIA.) GALVANIZED STEEL TENSION WIRE
- 14 INSTALL KNOX PADLOCK FOR ACCESS FOR EMERGENCY SERVICES.
- 15 ZIPTRACK SINGLE TRACK ASSEMBLY, PER MANUFACTURERS SPECIFICATIONS.

FENCING NOTES:

1. FENCE PANEL SYSTEM SHALL BE INDUSTRIAL GRADE "AMERISTAR-MONTAGE II MAJESTIC 2 RAIL" OR APPROVED EQUAL. SEE SPECIFICATIONS.
2. ALL FENCE HARDWARE SHALL BE FROM THE FENCING MANUFACTURER AND INSTALLED PER THE MANUFACTURER'S DETAILS.
3. COLOR TO MATCH EXISTING SITE ORNAMENTAL FENCING. OWNER TO APPROVE THE COLOR.
4. CONTRACTOR TO PROVIDE AND INSTALL GATE HOLDBACK FOR EACH GATE. HOLDBACK TO BE INSTALLED IN FENCE MOWSTRIP UNLESS OTHERWISE NOTED.



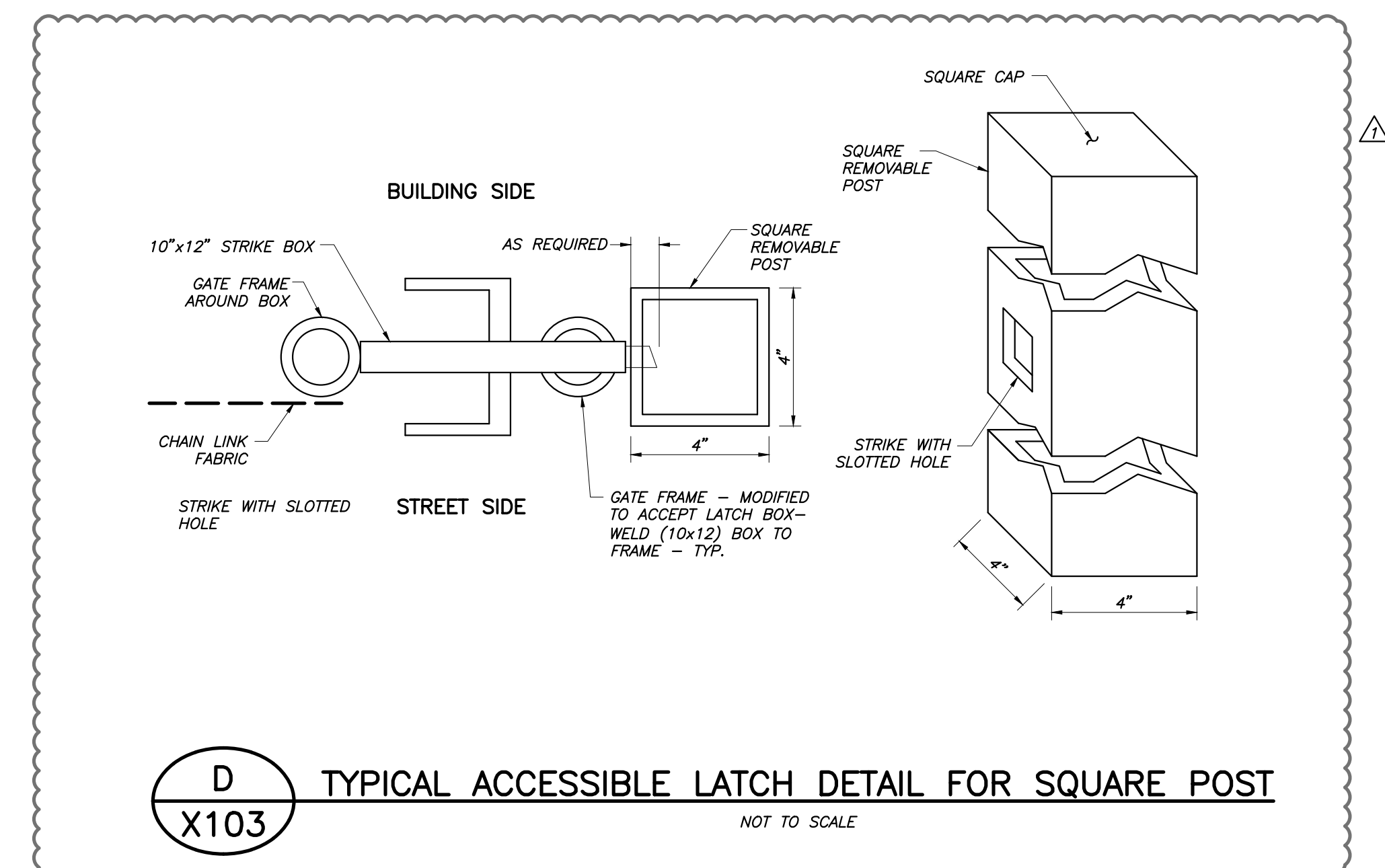
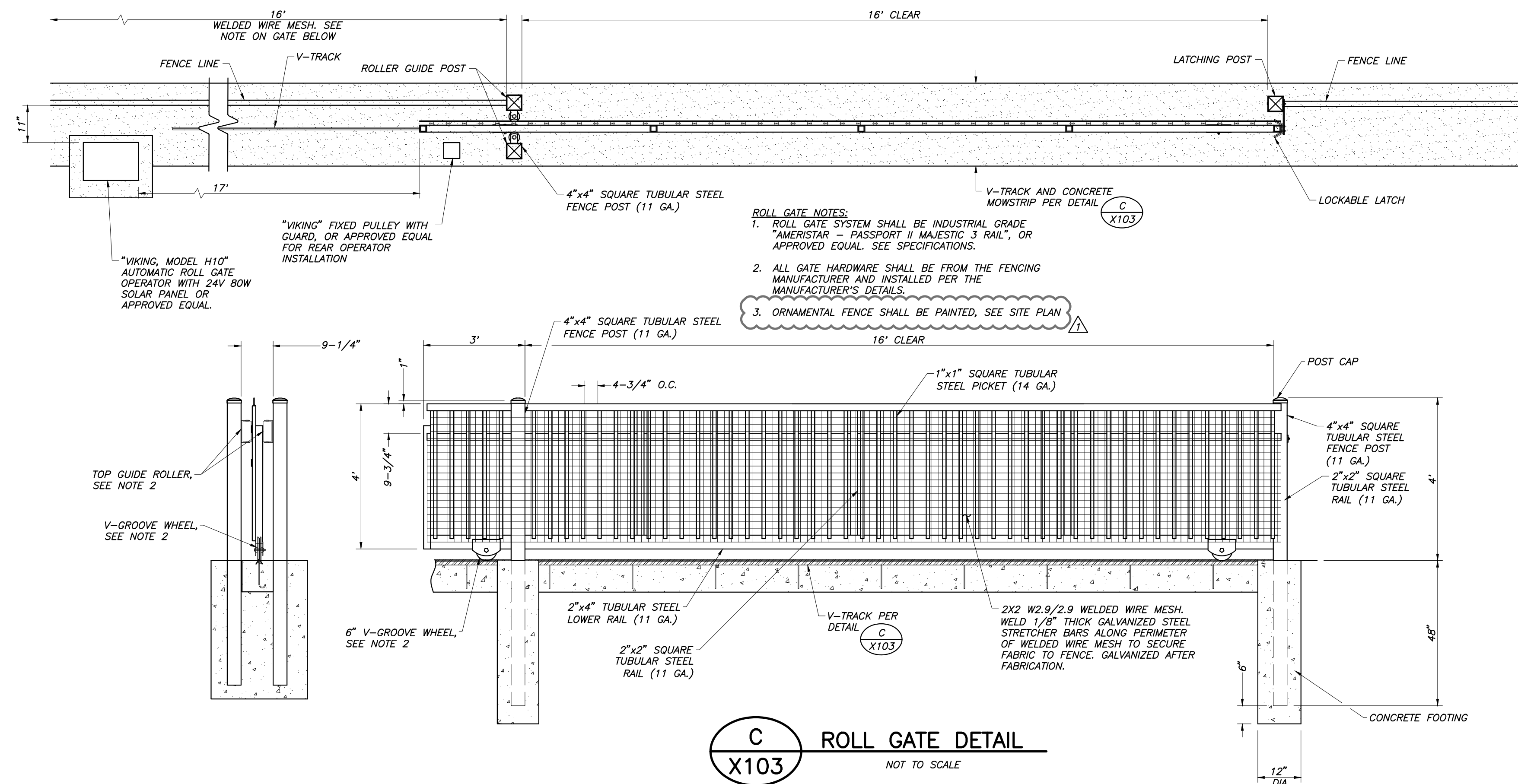
NOTES:

1. POST SIZE DEPENDS ON FENCE HEIGHT, WEIGHT AND WIND LOADS. SEE SIZING CHART.
2. SEE AMERISTAR GATE TABLE FOR STANDARD OUT TO OUTS. CUSTOM GATE OPENINGS AVAILABLE FOR SPECIAL OUT TO OUTS.
3. PANIC DEVICE, "CORBIN-RUSSWIN" EDR200 X P857 689 AND LOCK, "SCHLAGE" RIM CYLINDER 20-757 (PRIMUS) (IC CORE) 626 OR APPROVED EQUAL PER DETAIL FOR GATES IN EXIT DISCHARGE PATH.
4. 10" HIGH, 1/8" THICK STEEL PLATES WELDED ON THE INSIDE AND OUTSIDE OF THE BOTTOM FULL WIDTH OF ALL ACCESSIBLE GATES. THE KICK PLATE AND WELDS SHALL BE PAINTED/POWDER COATED TO MATCH FENCE FOR CORROSION RESISTANCE.
5. CONTRACTOR TO PROVIDE AND INSTALL GATE HOLDBACK FOR EACH GATE. HOLDBACK TO BE INSTALLED IN FENCE MOWSTRIP UNLESS OTHERWISE NOTED.
6. SEE FENCING NOTES TO LEFT.
7. PUSH/PULL OPENING FORCE SHALL BE 5 LBS. MAX.
8. PROVIDE SQUARE STORAGE SLEEVE PER SITE PLAN
9. ORNAMENTAL FENCE SHALL BE PAINTED. SEE SITE PLAN.

POST SIZING CHART	
GATE LEAF	GATE HEIGHT OVER 6' UP TO & INCLUDING 8'
UP TO 4'	3"x12" GA.
4'-1" TO 6'	4"x11" GA.
6'-1" TO 8'	6"x13/16" GA.

A ROLL GATE INSTALLATION

NOT TO SCALE



ADDENDUM #1 01-30-2015

ALL CHANGES ARE IDENTIFIED BY A REVISION CLOUD

Blair, Church & Flynn
Consulting Engineers
451 Clovis Avenue,
Suite 200
Clovis, California 93612
Tel (559) 326-1400
Fax (559) 326-1500

1/5/2015
Date Signed:

CONSULTANT

Blair, Church & Flynn
Consulting Engineers
451 Clovis Avenue,
Suite 200
Clovis, California 93612
Tel (559) 326-1400
Fax (559) 326-1500

REF. & REV.

MADERA UNIFIED SCHOOL DISTRICT

NISHIMOTO ELEMENTARY SCHOOL
FENCING IMPROVEMENTS
DETAILS

DR. BY: JSD
CH. BY: JSD
DATE: 1/5/2015
SCALE: AS NOTED

X103