



Curtis Manganaan <curtismanganaan@maderausd.org>

Re: PG&E PROJECT - DEMOS @ 13544 RD 26 1/2_APP# 126481986

Atherton, Kirk <KDA9@pge.com>

Tue, Jul 18, 2023 at 4:01 PM

To: GRISEL GALICIA <griselgalicia@maderausd.org>

Cc: Curtis Manganaan <CurtisManganaan@maderausd.org>, "Atherton, Kirk" <Kirk.Atherton@pge.com>

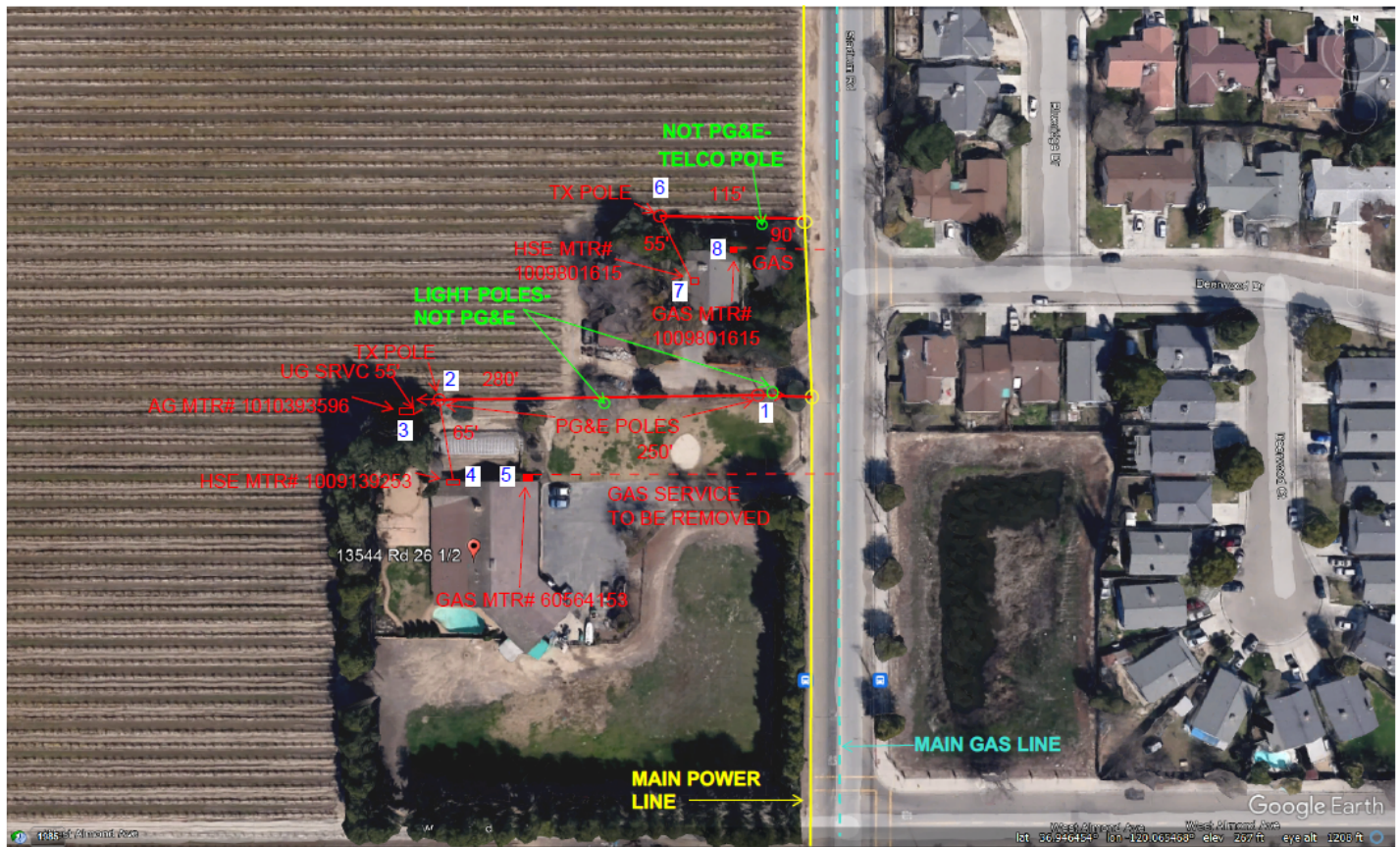
Hi Grisel,

I fielded the job site today and will submit the request to my gas and electric engineering departments for the demolition work. I can have the electric services and meters disconnected and removed but the gas service will take some time. I can offer an alternative if you guys are wanting to demo the houses ASAP. We can remove the gas meters and shut off the riser valves but you would have to work around the riser pipe until we are able to complete the gas cutoff work. I estimate the full cutoffs will take a few months.

Below are pictures of the riser pipes that I am referring to. We would remove everything but the pipes shown in the Red boxes would remain until we are able to complete the full cutoff work on both locations.



One more thing regarding the electrical. I am assuming that you want all of the electrical poles, wires and other equipment removed from the property as shown below in Red correct? Strip the property clean of our utilities correct?



Let me know if you have any questions.

Regards,

Kirk Atherton
Pacific Gas and Electric Company

Service Planning Project Manager – Yosemite Division

4155 E. Childs Ave. Merced, CA 95341

Cell# 559.706.6584

[Customer Connections Online Portal](#)

[Greenbook Manual Website](#)

[Building and Renovation Service Center : 1-877-743-7782](#)



From: GRISEL GALICIA <griselgalicia@maderausd.org>
Sent: Thursday, July 13, 2023 2:15 PM
To: Atherton, Kirk <KDA9@pge.com>
Cc: Curtis Manganaan <CurtisManganaan@maderausd.org>
Subject: Re: PG&E PROJECT - DEMOS @ 13544 RD 26 1/2_APP# 126481986

CAUTION: EXTERNAL SENDER!