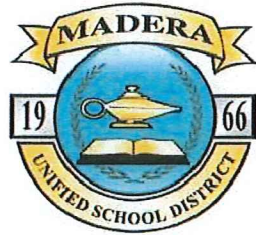


Bid No.010324



MADERA UNIFIED SCHOOL DISTRICT PERSHING ELEMENTARY SCHOOL KITCHEN

1505 ELLIS ST,
MADERA, CA 93638

GENERAL

PROJECT ADDRESS:
1505 ELLIS ST,
MADERA, CA 93638

PROJECT DESCRIPTION

PLUMBING REMODEL TO ACCOMMODATE NEW OVENS INCLUDING
THE DEMOLITION OF EXISTING CURBS AND ADDITION OF NEW
FLOOR SINK.

MECHANICAL ENGINEER OF RECORD

NET POSITIVE CONSULTING ENGINEERS

1446 TOLLHOUSE RD. #102
CLOVIS, CA 93611
559-940-7293

JONATHAN SCHLUNDT, PE

JSCHLUNDT@NPCENG.COM

PLUMBING SCHEDULE

MARK	FIXTURE	CONNECTION SIZES				DESCRIPTION
		S or W	V	CW	HW	
FS-1	FLOOR SINK	2"	1-1/2"	TP	---	JR SMITH MODEL #3150-Y, COATED CAST IRON, ACID RESISTANT PAINTED INTERIOR, 12-1/2" SQUARE TOP, 8" DEEP, DOUBLE DRAINAGE FLANGE, NO HUB OUTLET & DOME STRAINER.
TP-1	TRAP PRIMER	---	---	3/4"	---	PRECISION PLUMBING PRODUCTS "PRIME-NITE" MODEL #PR-500 PRESSURE DROP ACTIVATED WITH HDU-J DISTRIBUTION UNIT FOR UP TO 10 DRAINS. PROVIDE 14"x14" STAINLESS STEEL ACCESS DOOR WITH CYLINDRICAL LOCK. PROVIDE SOV UPSTREAM OF TRAP PRIMER.
TD-1	TRENCH DRAIN	4"	1-1/2"	---	---	ACO POWERDRAIN S100K 4" DRAIN SYSTEM WITH 4" THROAT, CLASS F VEHICLE RATING, LENGTH PER PLAN WITH 0.5% SLOPE BUILD-IN, HDPE TRENCH DRAIN SYSTEM WITH POLYPROPYLENE HEEL-PROOF ADA COMPLIANT 20" LONG SLOTTED GRATE, CLOSED END CAP, AND 4" NO-HUB BOTTOM

SITE MAP



SHEET INDEX

P001	COVER SHEET
P002	PLUMBING SPECIFICATIONS AND DETAILS
P200	PLUMBING DEMOLITION PLAN
P201	PROPOSED PLUMBING PLAN

GOVERNING CODES

2022 CALIFORNIA ADMINISTRATIVE CODE (CAC), C.C.R. TITLE 24, PART 1
2022 CALIFORNIA BUILDING CODE (CBC), C.C.R. TITLE 24, PART 2
2022 CALIFORNIA ELECTRICAL CODE (CEC), C.C.R. TITLE 24, PART 3
2022 CALIFORNIA MECHANICAL CODE (CMC), C.C.R. TITLE 24, PART 4
2022 CALIFORNIA PLUMBING CODE (CPC), C.C.R. TITLE 24, PART 5
2022 CALIFORNIA FIRE CODE (CFC), C.C.R. TITLE 24, PART 9
2022 CALIFORNIA REFERENCED STANDARDS CODE, C.C.R. TITLE 24, PART 12
2022 CALIFORNIA ENERGY CODE (CAC), C.C.R. TITLE 24, PART 6
2022 CALIFORNIA GREEN BUILDING STANDARDS CODE (CALGREEN), C.C.R. TITLE 24, PART 11
C.C.R., TITLE 19 PUBLIC SAFETY

GENERAL NOTES

- COORDINATION OF WORK: LAYOUT OF MATERIALS, EQUIPMENT AND SYSTEMS IS GENERALLY DIAGRAMMATIC UNLESS SPECIFICALLY DIMENSIONED. SOME WORK MAY BE SHOWN OFFSET FOR CLARITY.
- THE ACTUAL LOCATION OF ALL MATERIALS, PIPING, DUCTWORK, FIXTURES, EQUIPMENT, SUPPORTS, ETC. SHALL BE CAREFULLY PLANNED, PRIOR TO INSTALLATION OF ANY WORK TO AVOID ALL INTERFERENCES WITH EACH OTHER, OR WITH STRUCTURAL, ELECTRICAL, ARCHITECTURAL OR OTHER ELEMENTS.
- VERIFY THE PROPER VOLTAGE AND PHASE OF ALL EQUIPMENT WITH THE ELECTRICAL PLANS. ALL CONFLICTS SHALL BE CALLED TO THE ATTENTION OF THE ARCHITECT AND THE ENGINEER PRIOR TO THE INSTALLATION OF ANY WORK OR THE ORDERING OF ANY EQUIPMENT.
- ALL DRAWINGS AND SPECIFICATIONS ARE TO BE CONSIDERED PART OF THE CONTRACT DOCUMENTS. THE CONTRACTOR SHALL BE RESPONSIBLE FOR THE REVIEW AND COORDINATION OF ALL DRAWINGS PRIOR TO ANY CONSTRUCTION INCLUDING ARCHITECTURAL, STRUCTURAL, MECHANICAL, PLUMBING, AND ELECTRICAL. ANY WORK PERFORMED IN CONFLICT WITH THE CONTRACT DOCUMENTS OR ANY CODE REQUIREMENT SHALL BE CORRECTED BY THE CONTRACTOR AT HIS OWN EXPENSE AND AT NO EXPENSE TO THE OWNER OR THE OWNER REPRESENTATIVE.
- EXISTING PIPING IS SHOWN IN THEIR APPROXIMATE LOCATIONS ONLY. INFORMATION OF (E) UTILITIES IS BASED UPON EXISTING PLUMBING DRAWINGS AND OWNER'S BEST KNOWLEDGE. EXISTING INFORMATION SHOWN MAY NOT BE TAKEN AS COMPREHENSIVE, AND NO GUARANTEE IS MADE AS TO THE ACCURACY OR COMPLETENESS OF THE EXISTING INFORMATION SHOWN.
- MINIMUM SLOPE FOR SEWER IS 1/4" PER FT, UNLESS OTHERWISE NOTED.
- ALL ROOF PENETRATIONS SHALL BE COMPATIBLE WITH ROOF SYSTEM WITH AS FEW PENETRATIONS AS POSSIBLE.
- MINIMUM DOMESTIC WATER PIPE SIZE TO BE 3/4". USE A REDUCING ELL AT FIXTURE, IF NECESSARY.
- CONTRACTOR TO VERIFY EXACT LOCATION AND DEPTH OF POINTS OF CONNECTION TO SITE UTILITIES.
- ALL PLUMBING FIXTURES, VALVES, FAUCETS, FIXTURE STOPS, ETC. WHICH PROVIDE WATER FOR HUMAN CONSUMPTION MUST MEET THE "LEAD FREE" REQUIREMENT FOR THE STATE OF CALIFORNIA.
- MAXIMUM ALLOWABLE DISTANCE FOR HOT WATER LATERALS TO FIXTURES OFF OF THE CIRCULATING MAIN SHALL BE 10'-0" FOR HAND WASH SINKS AND LAVS, AND 15'-0" FOR OTHER SINKS.
- LEAN CONCRETE SHALL BE USED AS BACK FILL WHERE UTILITY TRENCHES EXTEND FROM THE EXTERIOR TO THE INTERIOR LIMITS OF THE BUILDING. LEAN CONCRETE SHALL EXTEND A MINIMUM DISTANCE OF TWO (2) FEET LATERALLY ON EACH SIDE OF THE EXTERIOR BUILDING LINE AND A MINIMUM OF SIX (6) INCHES ABOVE FOOTING PENETRATION.

PLUMBING LEGEND

SYMBOL	ITEM	ABBR.
—A—	ABOVE	ABV
—A—	ABOVE CEILING	ABV CLG
—A—	ABOVE FINISHED FLOOR	AFF
—A—	ALTERNATE	ALT
—A—	AND	AND
—A—	ARCHITECT / ARCHITECTURAL	ARCH
—A—	AT	AT
—A—	BELOW FLOOR	BEL FLR
—A—	BELOW GRADE	BEL GR
—A—	CALIFORNIA MECHANICAL CODE	CMC
—A—	CALIFORNIA PLUMBING CODE	CPC
—A—	CEILING	CLG
—A—	CENTER LINE	CL
—A—	CONTINUATION	CONT
—A—	CUBIC FEET PER HOUR	CFH
—A—	DIAMETER	DIA
—A—	DOWN	DN
—A—	DRAWING	DWG
—A—	ELBOW	ELL
—A—	ELECTRICAL	ELEC
—A—	EXISTING	(E)
—A—	FEET	FT
—A—	FLOOR	FLR
—A—	FLOW LINE	FL
—A—	GALLON	GAL
—A—	GALLONS PER HOUR	GPH
—A—	GALLONS PER MINUTE	GPM
—A—	GAUGE	GA
—A—	INSIDE DIAMETER	ID
—A—	INVERT ELEVATION	IE
—A—	MAXIMUM	MAX
—A—	MINIMUM	MIN
—A—	NEW	(N)
—A—	NOT IN CONTRACT	NIC
—A—	NOT TO SCALE	NTS
—A—	NUMBER	NO.
—A—	OWNER FURNISHED OWNER INSTALLED	OFOI
—A—	POUNDS	LBS
—A—	POUNDS PER SQUARE INCH	PSI
—A—	POUNDS PER SQUARE INCH ABSOLUTE	PSIA
—A—	POUNDS PER SQUARE INCH GAUGE	PSIG
—A—	POLYVINYL CHLORIDE	PVC
—A—	ROOM	RM
—A—	SPECIFICATION	SPEC
—A—	SQUARE FEET	SO FT
—A—	STAINLESS STEEL	SS
—A—	TEMPERATURE	TEMP
—A—	THROUGH	THRU
—A—	TYPICAL	(TYP)
—A—	UNDER GROUND	UG
—A—	WATER COLUMN	WC
—A—	WITH	W/
—A—	WITHOUT	W/O
—A—	COMPRESSED AIR	A
—A—	ACID VENT	AV
—A—	ACID WASTE	AW
—A—	ACID VENT RISER	AVR
—A—	ACID VENT THRU ROOF	AVTR
—A—	CONDENSATE DRAIN	CD
—A—	DOMESTIC COLD WATER	CW
—A—	DOMESTIC HOT WATER	HW
—A—	DOMESTIC HOT WATER RETURN	HW R
—A—	LOW PRESSURE NATURAL GAS	G
—A—	HIGH PRESSURE GAS	HPG
—A—	INDUSTRIAL COLD WATER	ICW
—A—	LIQUIFIED PETROLEUM GAS	LPG
—A—	FIRE PROTECTION LINE	---
—A—	RAIN WATER LEADER	RWL
—A—	OVERFLOW DRAIN	OD
—A—	STORM DRAIN	SD
—A—	SOIL or WASTE	S or W
—A—	MEDICAL AIR	MA
—A—	OXYGEN	O ₂
—A—	VACUUM	VAC
—A—	VENT	V
—A—	VENT RISER	VR
—A—	VENT THRU ROOF	VTR
—A—	CLEANOUT TO GRADE	COTG
—A—	DEMOLITION	DEMO
—A—	EXISTING PIPING	---
—A—	FLOOR CLEANOUT	FCD
—A—	HOSE BIBB	---
—A—	PIPING TURN UP	---
—A—	PIPING TURN DOWN	---
—A—	PIPING CAP	---
—A—	POINT OF CONNECTION TO EXISTING	---
—A—	ANGLE VALVE	---
—A—	BALANCE VALVE	---
—A—	BALL VALVE	---
—A—	CHECK VALVE	---

SYMBOL	ITEM	ABBR.
—A—	CONCENTRIC REDUCER	---
—A—	TWO-WAY CONTROL VALVE	---
—A—	PLUG VALVE	---
—A—	PRESSURE REDUCING VALVE	---
—A—	SHUT-OFF VALVE IN BOX	SOV
—A—	SHUT-OFF VALVE	SOV
—A—	THERMOSTATIC MIXING VALVE	---
—A—	TEMPERATURE / PRESSURE RELIEF VALVE	PRV
—A—	UNION	---
—A—	WALL CLEANOUT	WCO
—A—	"Y" TYPE STRAINER	---
—A—	PRESSURE GAUGE	---
—A—	TEMPERATURE GAUGE	---
—A—	KEYNOTE	---
—A—	NEW FIXTURE TAG EXAMPLE: WATER CLOSET - TYPE 1 (REFER TO PLUMBING SCHEDULE)	---
—A—	DETAIL REFERENCE EXAMPLE: DETAIL 2, SHEET P200	---
—A—	SECTION REFERENCE EXAMPLE: SECTION 3, SHEET P300	---

ANCHORAGE & BRACING NOTES

MEP COMPONENT ANCHORAGE NOTE

ALL MECHANICAL, PLUMBING AND ELECTRICAL COMPONENTS SHALL BE ANCHORED AND INSTALLED PER THE DETAILS ON THE DSA APPROVED CONSTRUCTION DOCUMENTS. THE FOLLOWING COMPONENTS SHALL BE ANCHORED OR BRACED TO MEET THE FORCE AND DISPLACEMENT REQUIREMENTS PRESCRIBED IN THE 2022 CBC, SECTIONS 1617A.1.18 THROUGH 1617A.1.26 AND ASCE 7-18 CHAPTERS 13, 26, AND 30.

- ALL PERMANENT EQUIPMENT AND COMPONENTS.
TEMPORARY, MOVABLE OR MOBILE EQUIPMENT THAT IS PERMANENTLY ATTACHED (E.G. HARD WIRED) TO THE BUILDING UTILITY SERVICES SUCH AS ELECTRICITY, GAS OR WATER, "PERMANENTLY ATTACHED" SHALL INCLUDE ALL ELECTRICAL CONNECTIONS EXCEPT PLUGS FOR 110/220 VOLT RECEPTACLES HAVING A FLEXIBLE CABLE.
- TEMPORARY, MOVABLE OR MOBILE EQUIPMENT WHICH IS HEAVIER THAN 400 POUNDS OR HAS A CENTER OF MASS LOCATED 4 FEET OR MORE ABOVE THE ADJACENT FLOOR OR ROOF LEVEL THAT DIRECTLY SUPPORT THE COMPONENT IS REQUIRED TO BE RESTRAINED IN A MANNER APPROVED BY DSA.

THE FOLLOWING MECHANICAL AND ELECTRICAL COMPONENTS SHALL BE POSITIVELY ATTACHED TO THE STRUCTURE BUT NEED NOT DEMONSTRATE DESIGN COMPLIANCE WITH THE REFERENCES NOTED ABOVE. THESE COMPONENTS SHALL HAVE FLEXIBLE CONNECTIONS PROVIDED BETWEEN THE COMPONENT AND ASSOCIATED DUCTWORK, PIPING, AND CONDUIT. FLEXIBLE CONNECTIONS MUST ALLOW MOVEMENT IN BOTH TRANSVERSE AND LONGITUDINAL DIRECTIONS:

- COMPONENTS WEIGHING LESS THAN 400 POUNDS AND HAVE A CENTER OF MASS LOCATED 4 FEET OR LESS ABOVE THE ADJACENT FLOOR OR ROOF LEVEL THAT DIRECTLY SUPPORT THE COMPONENT.
- COMPONENTS WEIGHING LESS THAN 20 POUNDS, OR IN THE CASE OF DISTRIBUTED SYSTEMS, LESS THAN 5 POUNDS PER FOOT, WHICH ARE SUSPENDED FROM A ROOF OR FLOOR OR HUNG FROM A WALL.

THE ANCHORAGE OF ALL MECHANICAL, ELECTRICAL, AND PLUMBING COMPONENTS SHALL BE SUBJECT TO THE APPROVAL OF THE DESIGN PROFESSIONAL IN GENERAL RESPONSIBLE CHARGE OR STRUCTURAL ENGINEER DELEGATED RESPONSIBILITY AND ACCEPTANCE BY DSA. THE PROJECT ARCHITECT WILL VERIFY THAT ALL COMPONENTS AND EQUIPMENT HAVE BEEN ANCHORED IN ACCORDANCE WITH ABOVE REQUIREMENTS.

PIPING, DUCTWORK, AND ELECTRICAL DISTRIBUTION SYSTEM BRACING NOTE

PIPING, DUCTWORK, AND ELECTRICAL DISTRIBUTION SYSTEMS SHALL BE BRACED TO COMPLY WITH THE FORCES AND DISPLACEMENTS PRESCRIBED IN ASCE 7-18 SECTION 13.3 AS DEFINED IN ASCE 7-18 SECTIONS 13.6.5, 13.6.6, 13.6.7, 13.6.8, AND 2022 CBC, SECTIONS 1617A.1.24, 1617A.1.25 AND 1617A.1.26.

THE METHOD OF SHOWING BRACING AND ATTACHMENTS TO THE STRUCTURE FOR THE IDENTIFIED DISTRIBUTION SYSTEM ARE AS NOTED BELOW. WHEN BRACING AND ATTACHMENTS ARE BASED ON A PRE-APPROVED INSTALLATION GUIDE (E.G. OSHPD OPM FOR 2019 CBC OR LATER), COPIES OF THE BRACING SYSTEM INSTALLATION GUIDE OR MANUAL SHALL BE AVAILABLE ON THE JOBSITE PRIOR TO THE START OF AND DURING THE HANGING AND BRACING OF THE DISTRIBUTION SYSTEMS. THE STRUCTURAL ENGINEER OF RECORD SHALL VERIFY THE ADEQUACY OF THE STRUCTURE TO SUPPORT THE HANGER AND BRACE LOADS.

MECHANICAL PIPING (MP), MECHANICAL DUCTS (MD), PLUMBING PIPING (PP), ELECTRICAL DISTRIBUTION SYSTEMS (E)

MP ☐ MD ☐ PP ☐ E ☐ - OPTION 1: DETAILED ON THE APPROVED DRAWINGS WITH PROJECT SPECIFIC NOTES AND DETAILS.
MP ☐ MD ☐ PP ☒ E ☐ - OPTION 2: SHALL COMPLY WITH THE APPLICABLE OSHPD PRE-APPROVAL OPM #



NET POSITIVE
consulting
engineers

www.NPCeng.com
559.940.7293

The ideas, drawings, designs and specifications incorporated herein serve as an instrument of services and is the property of Net Positive Consulting Engineers, Inc. and is not to be copied, reproduced, or distributed without the written authorization of Net Positive Consulting Engineers, Inc.



REVISIONS:

Symbol	Description
---	---
Symbol	Description
---	---
Symbol	Description
---	---

PROJECT NO: 1342

MADERA USD
PERSHING ES KITCHEN
1505 ELLIS ST, MADERA, CA 93638

DATE: 07/18/2023
SHEET TITLE:

PLUMBING
STANDARDS

SHEET NO:
P001

RECEIVED
AUG 24 2023
MADERA COUNTY
ENVIRONMENTAL HEALTH DIVISION
Madera County
Environmental Health Department
APPROVED
8/25/2023

9/24/2023 1:16 PM



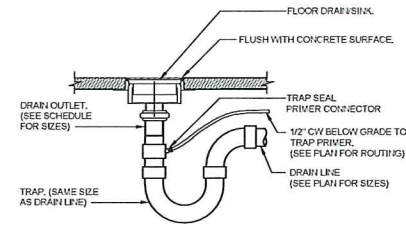
PLUMBING SPECIFICATIONS

- GENERAL MECHANICAL SPECIFICATIONS**
CONTRACTOR SHALL PROVIDE A COMPLETE WORKING SYSTEM AND SHALL INCLUDE ALL ACCESSORIES, PARTS, MATERIALS AND LABOR REQUIRED TO MEET PERFORMANCE, CAPACITY, AND QUALITY REQUIREMENTS OF CONTRACT DOCUMENTS.
1. **CODES AND REGULATIONS:** ALL WORK AND MATERIALS SHALL BE IN ACCORDANCE WITH THE FOLLOWING CODES AS ADOPTED AND AMENDED BY THE AUTHORITY HAVING JURISDICTION NOTHING IN THESE DRAWINGS OR SPECIFICATIONS IS TO BE CONSTRUED TO PERMIT WORK NOT CONFORMING TO THESE CODES.
- A. CALIFORNIA BUILDING CODE
B. CALIFORNIA MECHANICAL CODE
C. CALIFORNIA PLUMBING CODE
D. CALIFORNIA CODE OF REGULATIONS, TITLE 8, INDUSTRIAL RELATIONS
E. CALIFORNIA CODE OF REGULATIONS, TITLE 24, BUILDING STANDARDS
F. LOCAL CODES
2. **PERMITS, INSPECTIONS AND SERVICE CONNECTION CHARGES:** OBTAIN ALL PERMITS REQUIRED FOR PERFORMING WORK AND PAY ALL RELATED FEES. PAY ALL CHARGES FOR SERVICE CONNECTIONS, METERS, ETC. BY UTILITY COMPANIES OR DISTRICTS. CALL FOR ALL REQUIRED INSPECTIONS AND PAY ALL RELATED FEES.
3. **WORK BY OTHERS:** UNLESS OTHERWISE NOTED, THE ELECTRICAL CONTRACTOR SHALL PROVIDE ALL POWER WIRING, MOTOR STARTERS IN MOTOR CONTROL CENTERS, DISCONNECTS, CONTROL WIRING AND CONDUIT AND INSTALLATION OF CONTROL DEVICES.
4. **GARANTEE:** THE CONTRACTOR SHALL REPAIR ANY DEFECTS DUE TO FAULTY MATERIALS OR WORKMANSHIP AND PAY FOR ANY DAMAGE TO OTHER WORK RESULTING THEREFROM WHICH APPEARS WITHIN A PERIOD OF ONE YEAR FROM DATE OF ACCEPTANCE OF WORK.
5. **OPERATING AND MAINTENANCE INSTRUCTIONS:** TWO COPIES OF ALL EQUIPMENT OPERATION AND MAINTENANCE INSTRUCTIONS AND WIRING DIAGRAMS SHALL BE FURNISHED TO THE OWNER, THROUGH THE ENGINEER.
6. **MATERIALS, EQUIPMENT AND INSTALLATION:** EACH ITEM REFERRED TO ON THE DRAWINGS AND IN THE SPECIFICATIONS REPRESENTS THE STANDARD OF QUALITY DESIRED FOR MATERIALS, EQUIPMENT AND INSTALLATION. CONTRACTOR SHALL PROVIDE A RESUBMITTAL IF REQUESTED BY THE ENGINEER. ENGINEER WILL REVIEW EACH SUBMITTAL FOR PRODUCTS SCHEDULED ON THE DRAWINGS. IF MORE THAN ONE RESUBMITTAL IS REQUIRED BY THE ENGINEER, THE CONTRACTOR SHALL BEAR THE COST OF THE ENGINEER'S REVIEW ON A TIME AND MATERIAL BASIS. ALL MATERIALS AND EQUIPMENT SHALL BE NEW AND FREE FROM DEFECTS. ALL INSTALLATIONS SHALL BE AS RECOMMENDED BY THE MANUFACTURER AND AS SHOWN ON DRAWINGS.
7. **SUBSTITUTIONS:** MANUFACTURER EQUIPMENT AND PRODUCTS OTHER THAN THE SCHEDULED BASIS OF DESIGN ARE CONSIDERED A SUBSTITUTION. ALL SUBSTITUTIONS MUST BE SUBMITTED TO AND REVIEWED IN WRITING BY THE ENGINEER. SUBMITTAL MUST INCLUDE SIDE-BY-SIDE COMPARISON OF THE PRODUCT'S PERFORMANCE, ELECTRICAL DATA, ACCESSORIES, DIMENSIONS, AND WEIGHTS. CONTRACTORS SHALL BEAR THE COST OF THE ENGINEER'S REVIEW ON A TIME AND MATERIAL BASIS.
8. **PIPES PASSING THROUGH FIRE RATED SURFACES:** PIPES PASSING THROUGH FIRE RATED WALLS, FLOORS, CEILINGS, PARTITIONS, ETC. SHALL HAVE THE ANNUAL SPACE SURROUNDING THE PIPE OR PIPE INSULATION SEALED WITH FIRE RATED MATERIALS IN ACCORDANCE WITH THE REQUIREMENTS OF THE FIRE AUTHORITY HAVING JURISDICTION.

PLUMBING SPECIFICATIONS

1. **GENERAL:** ALL GENERAL MECHANICAL SPECIFICATIONS APPLY TO THIS SECTION.
2. **LAYOUT:** ROUTE PIPING TO AVOID CUTTING STRUCTURAL MEMBERS. WHERE CUTTING OR NOTCHING IS REQUIRED, THE STRUCTURAL MEMBER SHALL BE REINFORCED IN ACCORDANCE WITH THE UNIFORM BUILDING CODE. PIPING SHALL BE INSTALLED TO ENSURE UNRESTRICTED FLOW, ELIMINATE AIR POCKETS, PREVENT UNUSUAL NOISE AND PERMIT COMPLETE DRAINAGE OF THE SYSTEM. PROVIDE INDIVIDUAL SHUT OFF VALVES AT EACH FIXTURE AND EQUIPMENT ITEM.
3. **UNDERGROUND PIPING:** ALL FERROUS PIPING BELOW GRADE (EXCEPT CAST IRON) SHALL HAVE PROTECTIVE COATING OF "Z-TRU-COAT". MINIMUM COVER FOR ALL BELOW GRADE PIPING SHALL BE 24".
4. **PIPING MATERIALS:** PROVIDE NEW MATERIALS AS SPECIFIED. ALL PIPING MATERIALS SHALL BE COMPATIBLE WITH EXISTING PIPING MATERIAL. PROVIDE CONNECTIONS UTILIZING ELECTRIC UNIONS BY EPDM OR BRASS NIPPLES WITH MINIMUM LENGTH OF 4 INCHES WHEN CONNECTING FERROUS TO NON-FERROUS PIPING.
- A. DOMESTIC WATER - HARD TEMPER SEAMLESS COPPER, ASTM B88, BRAZED JOINTS
B. GAS - BLACK STEEL, ASTM A120
C. SOIL, WASTE & VENT - CAST IRON, CISPI 301
D. CONDENSATE DRAIN - HARD TEMPER SEAMLESS COPPER, ASTM B58, BRAZED JOINTS
5. **PIPE SUPPORTS**
- A. PIPE HANGER: STEEL "J" HANGER WITH SIDE BOLT, PROVIDE ISOLATING SHIELD ON INSULATED PIPE, GALVANIZED STEEL AND REINFORCING RIBS WITH 1/4" NON-CONDUCTING HAIR FELT PAD.
B. SPACING:
- | PIPE SIZE | MAX SPACING |
|---------------|-------------|
| 1/2" - 1-1/2" | 6'-0" |
| 2" - 6" | 10'-0" |
6. **INSULATION:** ALL HOT WATER PIPING TO BE INSULATED. WRAP ALL FITTINGS AND VALVES WITH PRE-CUT FIBERGLASS BLANKET TO THICKNESS MATCHING ADJOINING INSULATION. ALL INSULATION AND BLANKETS TO BE COVERED WITH PVC JACKET, SOLVENT WELD.
7. **VALVES:** SIZE 2" AND SMALLER, RISING STEM UNION BONNET ALL BRONZE, WEDGE DISC, 125 WSP, STOCKHAM B-106. SIZE 2-1/2" AND LARGER, IRON BODY, BRONZE MOUNTED NON-RISING STEM, FLANGED 125 WSP, STOCKHAM G-612.
8. **PIPE INSULATION (MAXIMUM THERMAL CONDUCTIVITY - 0.03 BTU-IN-HR-FT²-F):** INSULATE HOT WATER PIPING WITH 1" THICK FIBERGLASS WITH ALL SERVICE JACKET.
9. **FIXTURES:** ALL FIXTURES SHALL BE WHITE UNLESS OTHERWISE NOTED. ALL FIXTURES SHALL BE FURNISHED AND INSTALLED COMPLETE WITH TRIM, SEALS, CARRIERS, STOPS, ADA PROTECTIVE INSULATION, ETC. FIXTURE HEIGHT AND LOCATION AS INDICATED ON THE ARCHITECTURAL DRAWINGS. PROVIDE PROPER BACKING AND HANGER PLATES FOR WALL-HUNG FIXTURES.
10. **TESTS AND DISINFECTION:** PERFORM ALL TESTS AND DISINFECTION AS REQUIRED BY APPLICABLE CODES IN PRESENCE OF PLUMBING INSPECTOR.

PLUMBING DETAILS



FLOOR DRAIN / SINK CONN. NTS 1



The ideas, drawings, designs and specifications incorporated herein serve as an instrument of services and is the property of Net Positive Consulting Engineers, Inc. and is not to be copied, reproduced, or distributed without the written authorization of Net Positive Consulting Engineers, Inc.



REVISIONS:

Symbol	Description
---	---
Symbol	Description
---	---
Symbol	Description
---	---

MADERA USD
PERSHING ES KITCHEN

PROJECT NO: 1342

1500 ELLIS ST., MADERA, CA 93606

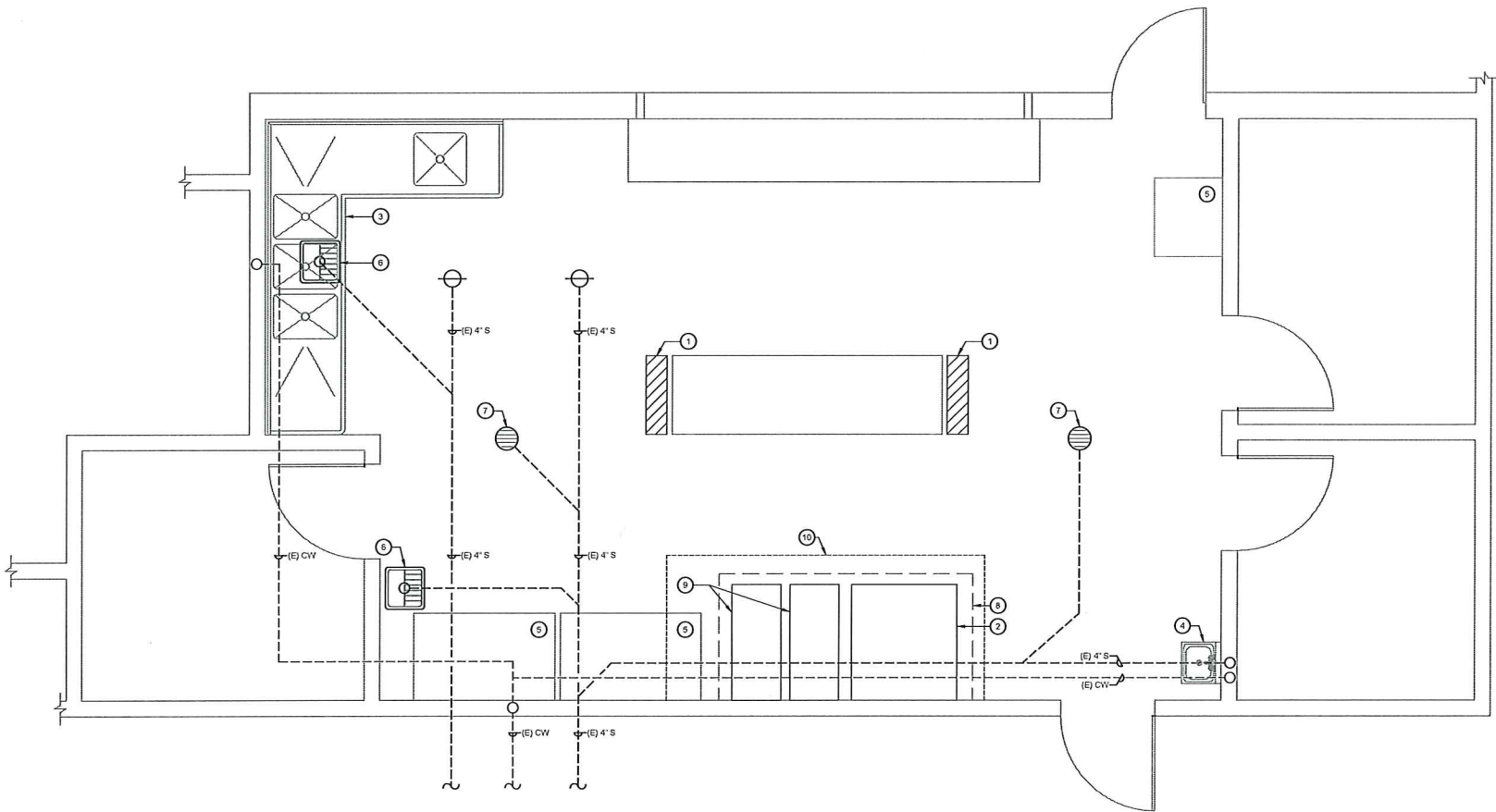
PROJECT NAME:

DATE: 07/18/2023
SHEET TITLE:

PLUMBING
SPECIFICATIONS
AND
DETAILS

SHEET NO:

P002



RECEIVED
AUG 24 2023
MADERA COUNTY
ENVIRONMENTAL HEALTH DIVISION

KEYNOTES

- 1. CUT (E) CONCRETE SLAB ON GRADE TO REMOVE (E) CURB AND ELECTRICAL OUTLET. REMOVE ELECTRICAL WIRE BACK TO PANEL. REMOVE BREAKER, AND SHUT-OFF. PREPARE SOIL FOR NEW CONCRETE.
- 2. (E) CONVECTION OVEN TO BE REMOVED BY OWNER
- 3. (E) KITCHEN SINK TO REMAIN
- 4. (E) HAND WASH SINK TO REMAIN
- 5. (E) KITCHEN EQUIPMENT TO REMAIN
- 6. (E) FLOOR SINK TO REMAIN
- 7. (E) FLOOR DRAIN TO REMAIN
- 8. (E) KITCHEN HOOD TO REMAIN
- 9. (E) KITCHEN EQUIPMENT TO BE REMOVED BY OWNER.
- 10. CUT (E) CONCRETE FOR (N) FLOOR SINK, (N) TRENCH DRAIN, AND (N) PIPE/IG. PREPARE SOIL FOR NEW CONCRETE.

GENERAL NOTES

- A. FIELD VERIFY SIZE AND LOCATION OF EXISTING LINES PRIOR TO COMMENCEMENT OF WORK



NET POSITIVE
consulting
engineers
www.NPCeng.com
559.540.7293

The ideas, drawings, designs and specifications incorporated herein serve as an instrument of services and is the property of Net Positive Consulting Engineers, Inc. and is not to be copied, reproduced, or distributed without the written authorization of Net Positive Consulting Engineers, Inc.



REVISIONS:

Symbol	Description
---	---
---	---
---	---
---	---

PROJECT NAME:

MADERA USD
PERSHING ES KITCHEN

1002 ELLIS ST, MADERA CA 93638

PROJECT NO: 1342

DATE: 07/18/2023

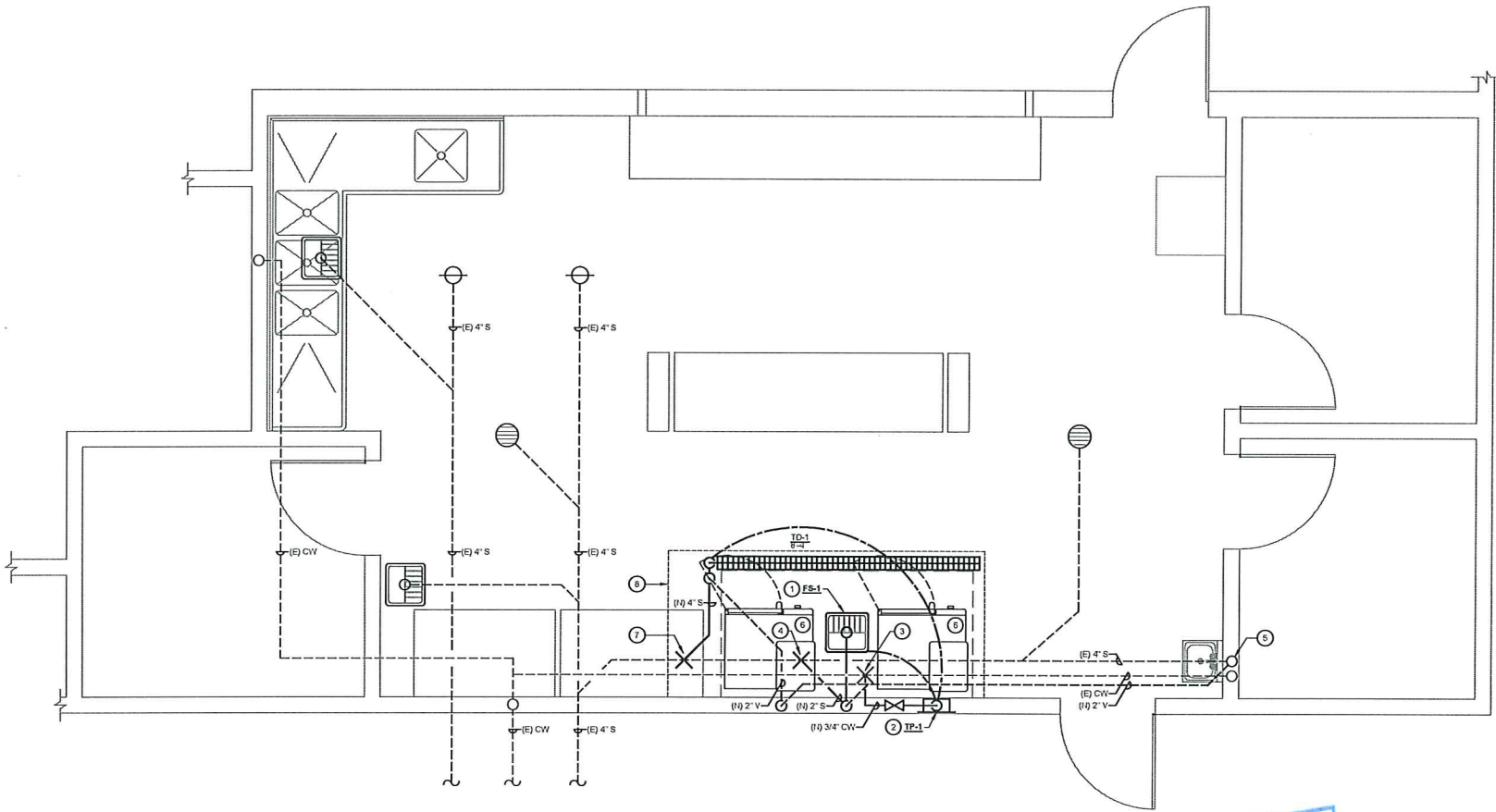
SHEET TITLE:

PLUMBING
DEMOLITION
PLAN

SHEET NO:

P200





RECEIVED
AUG 24 2023
MADERA COUNTY
ENVIRONMENTAL HEALTH DIVISION

KEYNOTES ©

1. INSTALL (E) FLOOR SINK PER DETAIL 1P002. FLOOR SINK LAYOUT TO BE FIELD VERIFIED BASED ON ACTUAL UNIT DIMENSIONS AND FINAL LAYOUT AS DETERMINED BY THE DISTRICT. FLOOR SINKS SHALL BE ACCESSIBLE AND VISIBLE FOR HEALTH DEPARTMENT INSPECTION.
2. PROVIDE (E) TRAP PRIMER. PROVIDE 12"x12" SS ACCESS PANEL.
3. POC OF (E) 3/4" CW TO (E) CW LINE.
4. POC OF (E) 2" S TO (E) 4" S.
5. CONNECT (E) 2" V TO (E) VENT ABOVE CEILING.
6. (E) OWNER FURNISHED ELECTRIC POWERED STEAM OVEN WITH POWER PROVIDED BY OWNER (EPO). PROVIDE 1" MIN. AIR GAP FROM WATER DRAIN TO FLOOR SINK.
7. POC OF (E) 4" S TO (E) 4" S.
8. MATCH (E) SLOPE TO (E) SURFACES. PROVIDE DOWELS AT (E) JOINT.

GENERAL NOTES

- A. FIELD VERIFY SIZE AND LOCATION OF EXISTING LINES PRIOR TO COMMENCEMENT OF WORK.



NET POSITIVE
consulting
engineers
www.NPCeng.com
559.940.7293

The ideas, drawings, designs and specifications incorporated herein serve as an instrument of services and is the property of Net Positive Consulting Engineers, Inc. and is not to be copied, reproduced, or distributed without the written authorization of Net Positive Consulting Engineers, Inc.



REVISIONS:

Symbol	Description
---	---
Symbol	Description
---	---
Symbol	Description
---	---

PROJECT NAME:
MADERA USD
PERSHING ES KITCHEN
1505 ELLIS ST., MADERA CA 95338

PROJECT NO. 1342

DATE: 07/18/2023
SHEET TITLE:

PROPOSED
PLUMBING
PLAN

SHEET NO:

P201

